



Modern 2-Bedroom  
Apartment in Prime Hawthorn  
East Location – Comfort,  
Convenience & Lifestyle



For Lease

213/12 Albert Street, Hawthorn East VIC 3123



\$675 per Week

## For Lease

213/12 Albert Street, Hawthorn East VIC 3123



### Modern 2-Bedroom Apartment in Prime Hawthorn East Location – Comfort, Convenience & Lifestyle

\*\*Scheduling your property inspection is now a breeze! Simply click on the "Book an Inspection" or "Request a Time" button to secure your appointment. You'll instantly receive a confirmation and be kept up-to-date with any alterations or cancellations concerning your scheduled visit. Please be aware, inspections may be subject to cancellation if no bookings are registered. Make your booking today and take the first step in finding your ideal home\*\*

Positioned in the heart of sought-after Hawthorn East, this well-appointed 2-bedroom, 2-bathroom apartment with 1 secure car space offers an exceptional lifestyle opportunity. Nestled within a vibrant and well-connected neighbourhood, the property is just moments from Camberwell Junction, offering an array of cafes, restaurants, supermarkets, and boutique shopping. Enjoy proximity to beautiful parks, local amenities, making it ideal for both professionals and small families.

The apartment is perfectly located for effortless commuting, wit...



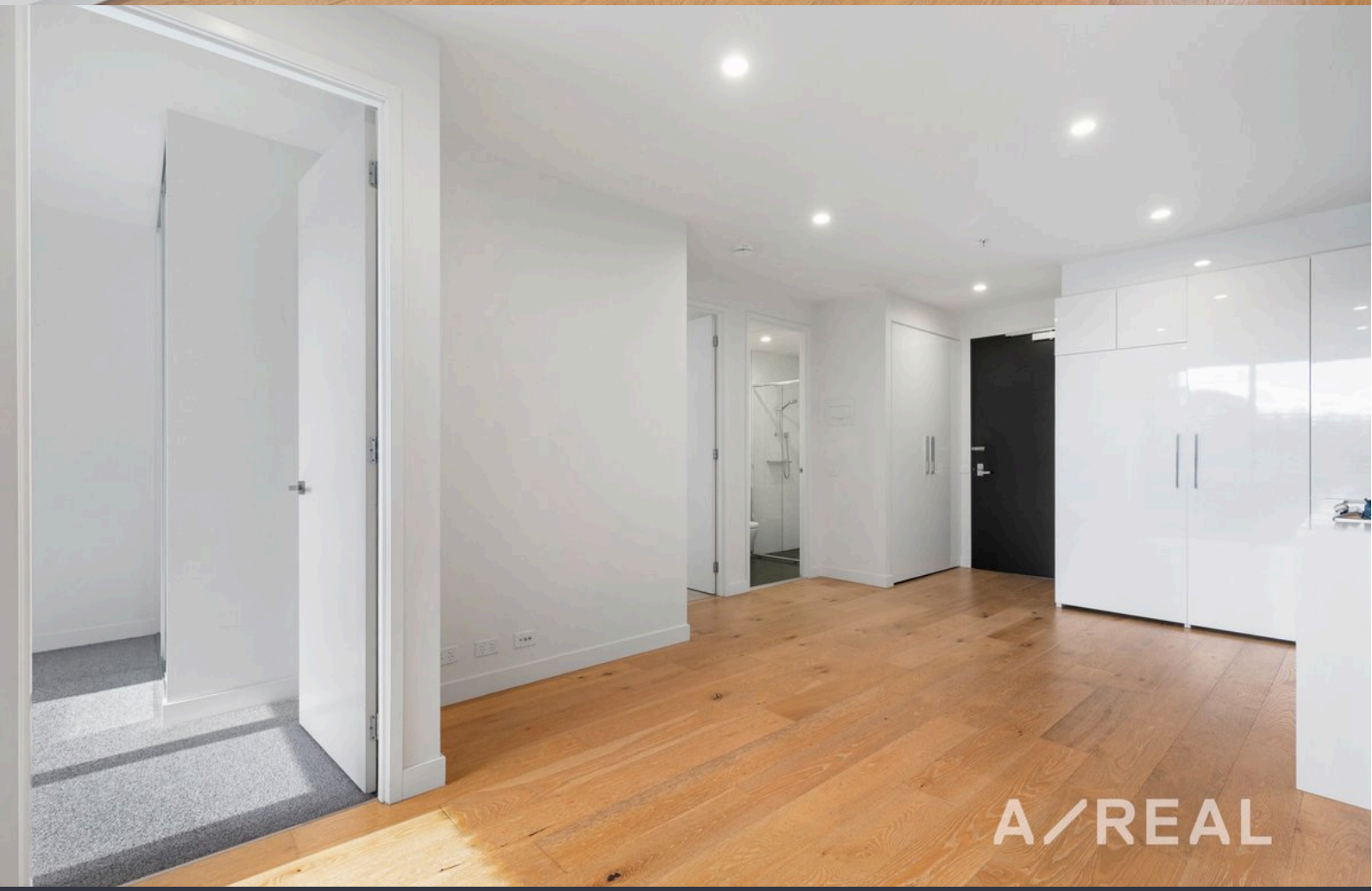
#### Jessica Sha

Business Development Manager, Licensed Estate Agent

0406 265 788

03 9818 8991

[jessica.sha@areal.com.au](mailto:jessica.sha@areal.com.au)



A/REAL



A/REAL



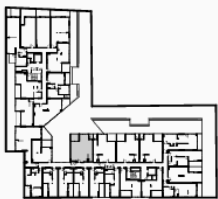
A/REAL



## Apartment Type 5

B213, B313, B411, B511

Total Area	71.5m <sup>2</sup>
Internal Area	62.5m <sup>2</sup>
External Area	9m <sup>2</sup>



North



## BOX HILL

Suite 3.4, Level 3, 990 Whitehorse Road, Box Hill. Victoria 3128 | 8686 8388

## HAWTHORN EAST

33 Camberwell Road, Hawthorn. Victoria 3123 | 9818 8991

## MELBOURNE CBD

Level 7, 99 Queen Street, Melbourne. VIC 3000 | 9818 8991

## NORTH

Suites 4 & 5, Level 1, 494 High Street, Lalor. VIC 3075 | 03 9436 0888

## POINT COOK

Entrance C4, Level 1, 2 Main Street, Point Cook. VIC 3030 | 8686 8338

## SOUTH MORANG

29 Gorge Road, South Morang. VIC 3752 | 8804 5888

[info@areal.com.au](mailto:info@areal.com.au)