

Modern Urban Living, Hawthorn East Lifestyle



For Sale

610/32 Lilydale Grove, Hawthorn East VIC 3123



\$330,000 - \$355,000

For Sale

610/32 Lilydale Grove, Hawthorn East VIC 3123



Modern Urban Living, Hawthorn East Lifestyle

Set on the sixth floor of a striking contemporary building, this well-appointed one-bedroom apartment delivers a walk-to-everything lifestyle that makes inner-east living so appealing. The home pairs clean contemporary finishes with a coveted location that places the area's best cafes, transport, dining and parkland within a comfortable walk.

Full-height sliding doors open to a private balcony screened by decorative laser-cut panels, where wide views across the neighbourhood rooftops provide a wonderful sense of space and sky. Pale timber floorboards run through the living and dining area, connecting seamlessly to a sleek kitchen with stone benchtops, gas cooking, oven and mirrored splashback. The bedroom is carpeted for comfort, fitted with mirrored built-in robes and complemented by a separate study nook. A smartly finished bathroom offers floor-to-ceiling tiling with mosaic detailing and a rain shower, while a European laundry, split-system climate control, secure car space and st...



Lisa Tsang

Sales Executive

0493 890 612

9818 8991

lisa.tsang@areal.com.au



Keith Chan

Sales Executive, Auctioneer

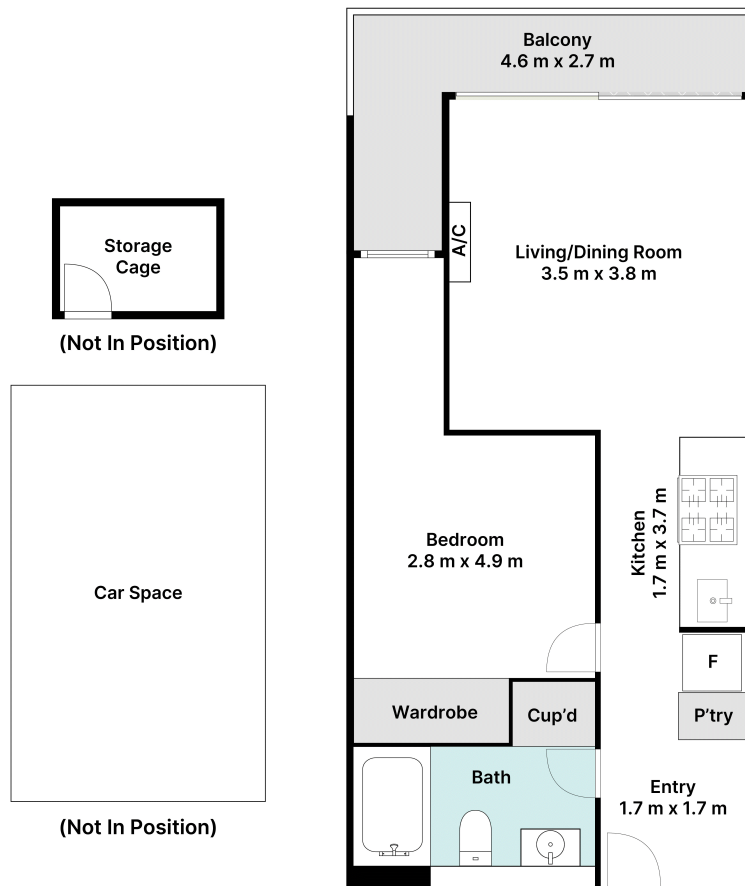
0410 234 188

9818 8991

keith.chan@areal.com.au







Floorplan

BOX HILL

Suite 3.4, Level 3, 990 Whitehorse Road, Box Hill. Victoria 3128 | 8686 8388

HAWTHORN EAST

33 Camberwell Road, Hawthorn. Victoria 3123 | 9818 8991

MELBOURNE CBD

Level 7, 99 Queen Street, Melbourne. VIC 3000 | 9818 8991

NORTH

Suites 4 & 5, Level 1, 494 High Street, Lalor. VIC 3075 | 03 9436 0888

POINT COOK

Entrance C4, Level 1, 2 Main Street, Point Cook. VIC 3030 | 8686 8338

SOUTH MORANG

29 Gorge Road, South Morang. VIC 3752 | 8804 5888

info@areal.com.au