

Charming Family Home in Prime Berwick Location



For Lease

139 Avebury Drive, Berwick VIC 3806

 3  1

\$535 per Week

For Lease

139 Avebury Drive, Berwick VIC 3806



Charming Family Home in Prime Berwick Location

****Booking your inspection is easy and essential!**

Simply click on the “Book an Inspection” or “Request a Time” button to secure your spot. You’ll receive instant confirmation and be kept informed of any updates or changes to your inspection.

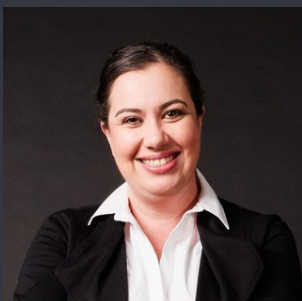
Please note, inspections may be cancelled if no registrations are received, so be sure to book in to avoid missing out.

Register today and take the first step towards securing your new home.

Positioned in a sought-after pocket on the north side of Berwick, this well-presented home offers comfort, space, and convenience for everyday living.

Featuring three generous bedrooms, the spacious master includes a walk-in robe and semi-ensuite access, while the remaining bedrooms are fitted with built-in robes and serviced by a central bathroom.

The home offers a light-filled open plan living area, complemented by a well-appointed kitchen with ample cupboard and bench space. A separate dining area flows through to an outdoor alfresco space, ideal for ente...



Lauren Allan

Leasing Specialist

03 9818 8991

lauren.allan@areal.com.au

A/REAL





BOX HILL

Suite 3.4, Level 3, 990 Whitehorse Road, Box Hill. Victoria 3128 | 8686 8388

HAWTHORN EAST

33 Camberwell Road, Hawthorn. Victoria 3123 | 9818 8991

MELBOURNE CBD

Level 7, 99 Queen Street, Melbourne. VIC 3000 | 9818 8991

NORTH

Suites 4 & 5 High Street, Lalor. VIC 3075 | 03 9436 0888

POINT COOK

Entrance C4, Level 1, 2 Main Street, Point Cook. VIC 3030 | 8686 8338

SOUTH MORANG

29 Gorge Road, South Morang. VIC 3752 | 8804 5888

info@areal.com.au