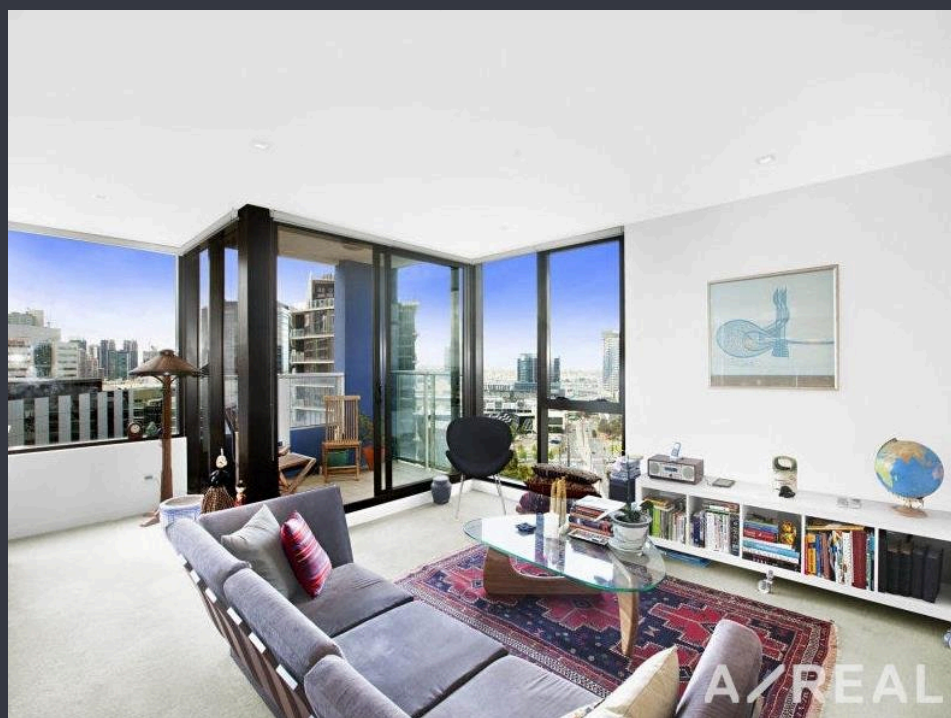


## Stylish Waterfront Living on the 19th Floor



For Lease

1907/100 Harbour Esplanade, Docklands VIC 3008

 2  2

\$750 per Week

## For Lease

1907/100 Harbour Esplanade, Docklands VIC 3008



### Stylish Waterfront Living on the 19th Floor

\*\*Scheduling your property inspection is now a breeze! Simply click on the "Book an Inspection" or "Request a Time" button to secure your appointment. You'll instantly receive a confirmation and be kept up-to-date with any alterations or cancellations concerning your scheduled visit. Please be aware, inspections may be subject to cancellation if no bookings are registered. Make your booking today and take the first step in finding your ideal home\*\*

Positioned high on the 19th floor, this well-appointed apartment offers an exceptional lifestyle in the heart of Docklands, with sweeping views and an abundance of natural light throughout.

The property features two generously sized bedrooms, both fitted with built-in robes, including a master bedroom with its own private ensuite. A sleek central bathroom services the second bedroom, making the layout both practical and comfortable.

The modern kitchen is equipped with quality appliances, stone benchtops, and ample storage, seamlessly flo...



**Amanda Zhou**

Relationship Manager

03 9818 8991

amanda.zhou@areal.com.au

A/REAL





## INSPECTION & APPLICATION PROCESS



VIEW LISTING ONLINE



GET IN TOUCH



ATTEND AN INSPECTION



APPLY ONLINE

Click the "Register" or "Book with Inspect Real Estate" button and enter your preferred contact details so that we can keep you up to date with any changes or cancellations to your booking.

If the advertised time does not suit: click "Get in Touch" or "Email" to submit your interest in the property. You will then be kept up to date about any future inspections.

Attend an inspection with one of our Leasing Specialists.

After your inspection, you will receive a link with instructions on how to apply online via 2Apply.

Visit [www.2apply.com.au](http://www.2apply.com.au)

## BOX HILL

Suite 3.4, Level 3, 990 Whitehorse Road, Box Hill. Victoria 3128 | 8686 8388

## HAWTHORN EAST

33 Camberwell Road, Hawthorn. Victoria 3123 | 9818 8991

## MELBOURNE CBD

Level 7, 99 Queen Street, Melbourne. VIC 3000 | 9818 8991

## NORTH

Suites 4 & 5 High Street, Lalor. VIC 3075 | 03 9436 0888

## POINT COOK

Entrance C4, Level 1, 2 Main Street, Point Cook. VIC 3030 | 8686 8338

## SOUTH MORANG

29 Gorge Road, South Morang. VIC 3752 | 8804 5888

[info@areal.com.au](mailto:info@areal.com.au)