

Charming Period Home in Prime Carnegie Location – Walk to Everything



For Lease

6 Shepparson Avenue, Carnegie VIC 3163

 3  1

\$820 per Week

For Lease

6 Shepparson Avenue, Carnegie VIC 3163



Charming Period Home in Prime Carnegie Location – Walk to Everything

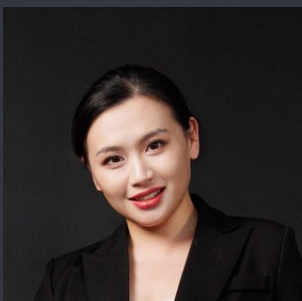
Positioned in one of Carnegie's most sought-after pockets, this beautifully presented three-bedroom period home offers the perfect blend of classic character, generous space and everyday convenience — all just moments from Koornang Road's vibrant cafés, shops, library and train station.

Filled with timeless charm, the home showcases high ceilings, ornate cornices, open fireplaces and polished Baltic pine floors, creating a warm and inviting living environment.

Inside, a welcoming entrance hall leads to three well-proportioned bedrooms, all with built-in robes. One bedroom features a charming open fireplace, while another enjoys a bay window with built-in seating. A light-filled living area connects seamlessly to a spacious kitchen and dining zone, appointed with quality Blackwood cabinetry and stainless-steel appliances.

The central bathroom is complemented by a separate laundry and additional toilet, offering practical everyday living.

Step outside to a large, private backyard su...



Renata Xiang

Business Development Manager

0437 626 898

03 9116 5797

renata.xiang@areal.com.au

A/REAL



INSPECTION & APPLICATION PROCESS



VIEW LISTING ONLINE



GET IN TOUCH



ATTEND AN INSPECTION



APPLY ONLINE

Click the “Register” or “Book with Inspect Real Estate” button and enter your preferred contact details so that we can keep you up to date with any changes or cancellations to your booking.

If the advertised time does not suit: click “Get in Touch” or “Email” to submit your interest in the property. You will then be kept up to date about any future inspections.

Attend an inspection with one of our Leasing Specialists.

After your inspection, you will receive a link with instructions on how to apply online via 2Apply.

Visit www.2apply.com.au



UNFURNISHED PROPERTY



BOX HILL

Suite 3.4, Level 3, 990 Whitehorse Road, Box Hill. Victoria 3128 | 8686 8388

HAWTHORN EAST

33 Camberwell Road, Hawthorn. Victoria 3123 | 9818 8991

MELBOURNE CBD

Level 7, 99 Queen Street, Melbourne. VIC 3000 | 9818 8991

NORTH

Suites 4 & 5 High Street, Lalor. VIC 3075 | 03 9436 0888

POINT COOK

Entrance C4, Level 1, 2 Main Street, Point Cook. VIC 3030 | 8686 8338

SOUTH MORANG

29 Gorge Road, South Morang. VIC 3752 | 8804 5888

info@areal.com.au