

## Modern Family Living



## For Lease

1/19 Duke Street, Kew VIC 3101

 3  2

\$795 per Week

## For Lease

1/19 Duke Street, Kew VIC 3101

 3  2

### Modern Family Living

Situated in one of Melbourne's most prestigious suburbs, this beautifully presented home offers an enviable lifestyle within walking distance to Willsmere Village and with easy access to the freeway. Surrounded by leafy serenity, the location is enriched by the nearby Anniversary Trail, charming cafés, and boutique shopping, while also being conveniently positioned close to esteemed schools, express city buses, Kew Junction, Westfield Doncaster, and Box Hill Central, with the Eastern Freeway ensuring a seamless commute to the CBD.

Designed to nurture comfort and effortless living, every space in this home creates an uplifting environment for families to relax and entertain. The interior features stunning Baltic timber floors and a bright, welcoming atmosphere throughout. A spacious living area with a cozy gas fireplace flows seamlessly into a generous, well-appointed kitchen, complete with quality stainless-steel appliances, sleek glass splashbacks, stone benchtops, and ample cabinet...

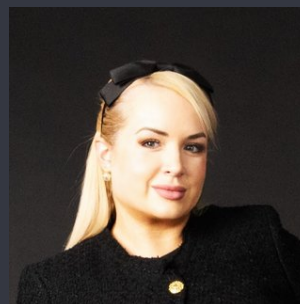


**Lauren Allan**

Leasing Specialist

03 9818 8991

[lauren.allan@areal.com.au](mailto:lauren.allan@areal.com.au)



**Lindel Steel**

Relationship Manager

03 9818 8991

[lindel.steel@areal.com.au](mailto:lindel.steel@areal.com.au)

A/REAL



A / REAL



## BOX HILL

Suite 3.4, Level 3, 990 Whitehorse Road, Box Hill. Victoria 3128 | 8686 8388

## HAWTHORN EAST

33 Camberwell Road, Hawthorn. Victoria 3123 | 9818 8991

## MELBOURNE CBD

Level 7, 99 Queen Street, Melbourne. VIC 3000 | 9818 8991

## NORTH

Suites 4 & 5 High Street, Lalor. VIC 3075 | 03 9436 0888

## POINT COOK

Entrance C4, Level 1, 2 Main Street, Point Cook. VIC 3030 | 8686 8338

## SOUTH MORANG

29 Gorge Road, South Morang. VIC 3752 | 8804 5888

[info@areal.com.au](mailto:info@areal.com.au)