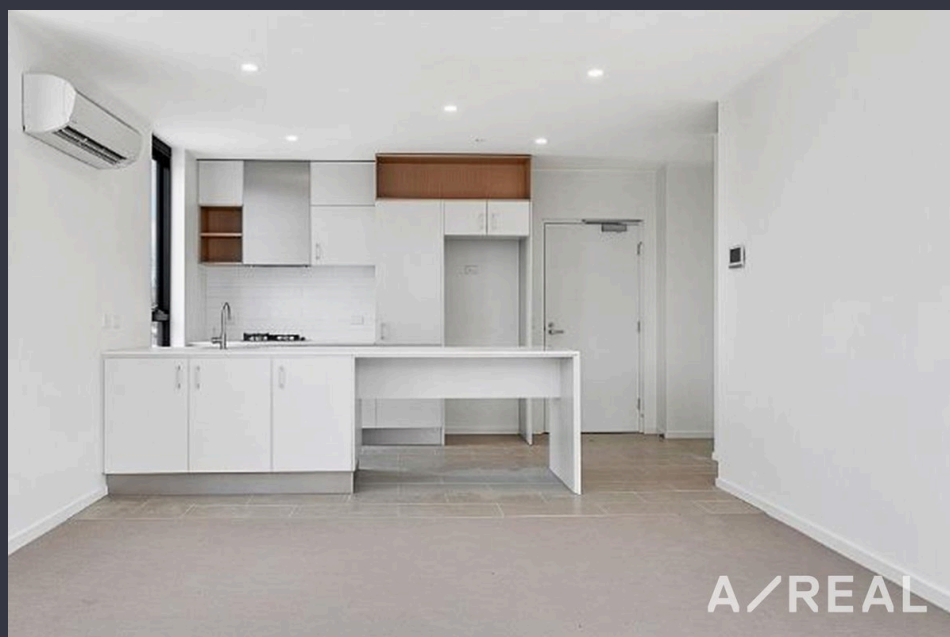


## Two-Bedroom beauty at Mason Point!



## For Lease

212/30 Bush Boulevard, Mill Park VIC 3082



\$525 per Week

## For Lease

212/30 Bush Boulevard, Mill Park VIC 3082

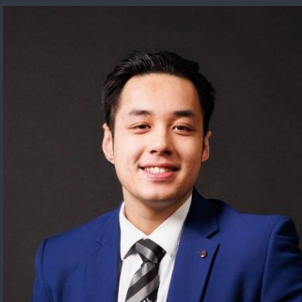


### Two-Bedroom beauty at Mason Point!

\*\*\*Scheduling your property inspection is now a breeze! Simply click on the "Book an Inspection" or "Request a Time" button to secure your appointment. You'll instantly receive a confirmation and be kept up-to-date with any alterations or cancellations concerning your scheduled visit. Please be aware, inspections may be subject to cancellation if no bookings are registered. Make your booking today and take the first step in finding your ideal home\*\*

Finest quality inclusions and interiors, boasting spacious bedroom(s) with convenient built-in mirrored robes, paired with one equally stylish bathroom featuring a large walk-in shower, plus ensuite. Entertain your guests with the vast open-plan living/lounge area and superb dining space, complimented with a beautiful balcony.

Enjoy a kitchen that is fully equipped with European appliances, stone bench tops and easily maintained ceramic splashbacks. Further highlights include carpeted bedrooms, split system heating and cooling in livin...



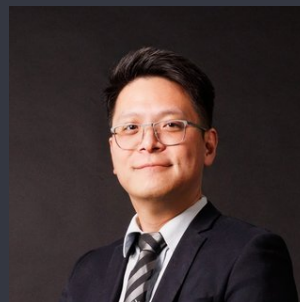
**Alex Do**

Leasing Specialist

0433 855 306

03 9818 8991

[alex.do@areal.com.au](mailto:alex.do@areal.com.au)



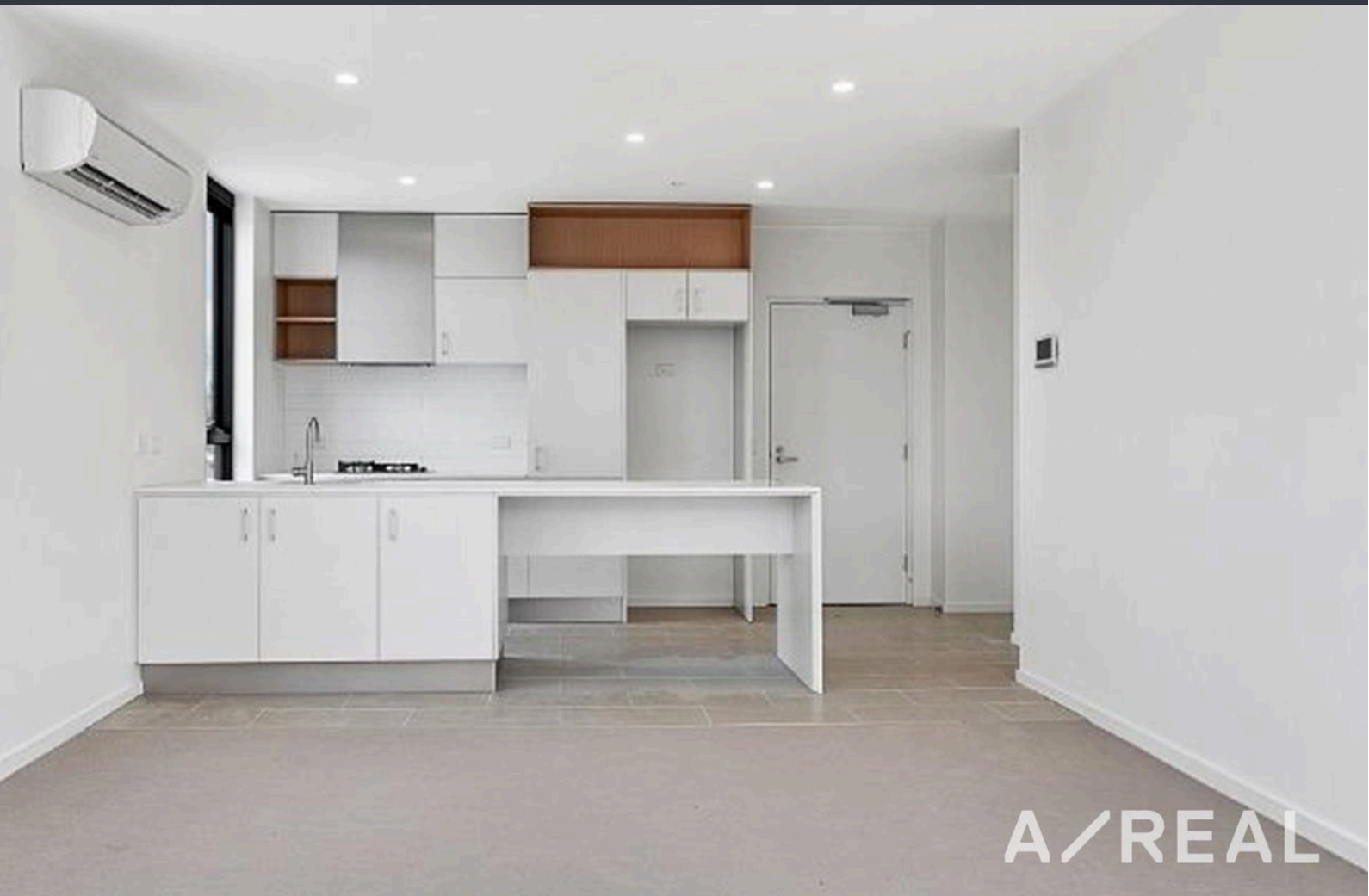
**Alex Deng**

Leasing Specialist

0402 932 533

03 9818 8991

[alex.deng@areal.com.au](mailto:alex.deng@areal.com.au)





## BOX HILL

Suite 3.4, Level 3, 990 Whitehorse Road, Box Hill. Victoria 3128 | 8686 8388

## HAWTHORN EAST

33 Camberwell Road, Hawthorn. Victoria 3123 | 9818 8991

## MELBOURNE CBD

Level 7, 99 Queen Street, Melbourne. VIC 3000 | 9818 8991

## NORTH

Suites 4 & 5 High Street, Lalor. VIC 3075 | 03 9436 0888

## POINT COOK

Entrance C4, Level 1, 2 Main Street, Point Cook. VIC 3030 | 8686 8338

## SOUTH MORANG

29 Gorge Road, South Morang. VIC 3752 | 8804 5888

[info@areal.com.au](mailto:info@areal.com.au)