

A/REAL

Spacious City Living in the Landmark Vision Complex



For Sale

1705/500 Elizabeth Street, Melbourne VIC 3000

 3  2

\$650,000-\$695,000

For Sale

1705/500 Elizabeth Street, Melbourne VIC 3000

 3  2

Spacious City Living in the Landmark Vision Complex

Positioned high within the iconic Vision Apartments, this spacious three-bedroom, two-bathroom residence delivers an exceptional inner-city lifestyle with modern comfort, quality finishes and outstanding convenience.

Designed for effortless living, the apartment showcases a light-filled open-plan living and dining area that flows seamlessly to a covered balcony—an inviting space to relax while enjoying the surrounding city outlooks. The sleek kitchen is appointed with premium Miele appliances, stone benchtops and ample storage, combining style with everyday functionality.

The generous main bedroom features a walk-in robe and private ensuite, while the additional two bedrooms are fitted with built-in robes and serviced by a stylish central bathroom. Quality finishes are evident throughout, including full-height tiling, mirrored cabinetry and contemporary fittings.

Additional features include split-system heating and cooling, double-glazed windows, a European laundry with storage, vi...



Kay Lim

Sales Executive, Licensed Estate Agent

0416 260 421

03 8686 8388

kay.lim@areal.com.au



Aaron Tan

Sales Executive

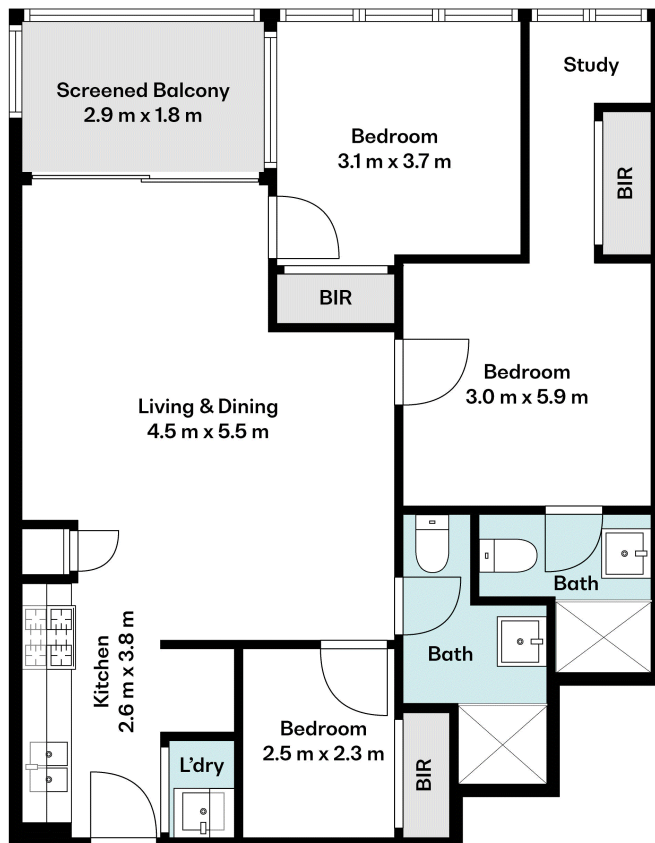
0421 247 332

03 8686 8388

aaron.tan@areal.com.au







BOX HILL

Suite 3.4, Level 3, 990 Whitehorse Road, Box Hill. Victoria 3128 | 8686 8388

HAWTHORN EAST

33 Camberwell Road, Hawthorn. Victoria 3123 | 9818 8991

MELBOURNE CBD

Level 7, 99 Queen Street, Melbourne. VIC 3000 | 9818 8991

NORTH

Suites 4 & 5, Level 1, 494 High Street, Lalor. VIC 3075 | 03 9436 0888

POINT COOK

Entrance C4, Level 1, 2 Main Street, Point Cook. VIC 3030 | 8686 8338

SOUTH MORANG

29 Gorge Road, South Morang. VIC 3752 | 8804 5888

info@areal.com.au