

Home Sweet Home



For Lease

36 Derby Drive, Epping VIC 3076

 3  2

\$490 per week

For Lease

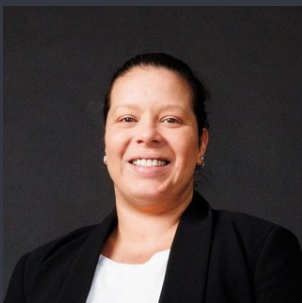
36 Derby Drive, Epping VIC 3076

 3  2

Home Sweet Home

You will find this home positioned within close proximity to Meadow Glen Primary, a corner milk bar, bus stops, Greenbrook Shops, South Morang Train Station and Westfield Plenty Valley.

- 3 bedrooms, main with walk in robe and ensuite
- Remaining bedrooms with built in robes
- Kitchen with gas cooktop, under bench oven and stone benchtop
- L-shaped formal lounge/dining room and additional rumpus
- Bathroom with shower and bath
- Single remote garage
- Undercover entertaining area in the backyard
- Ducted heating and evaporative cooling



Jessica Dossis

Relationship Manager

03 9436 0888

jessica.dossis@areal.com.au

A/REAL

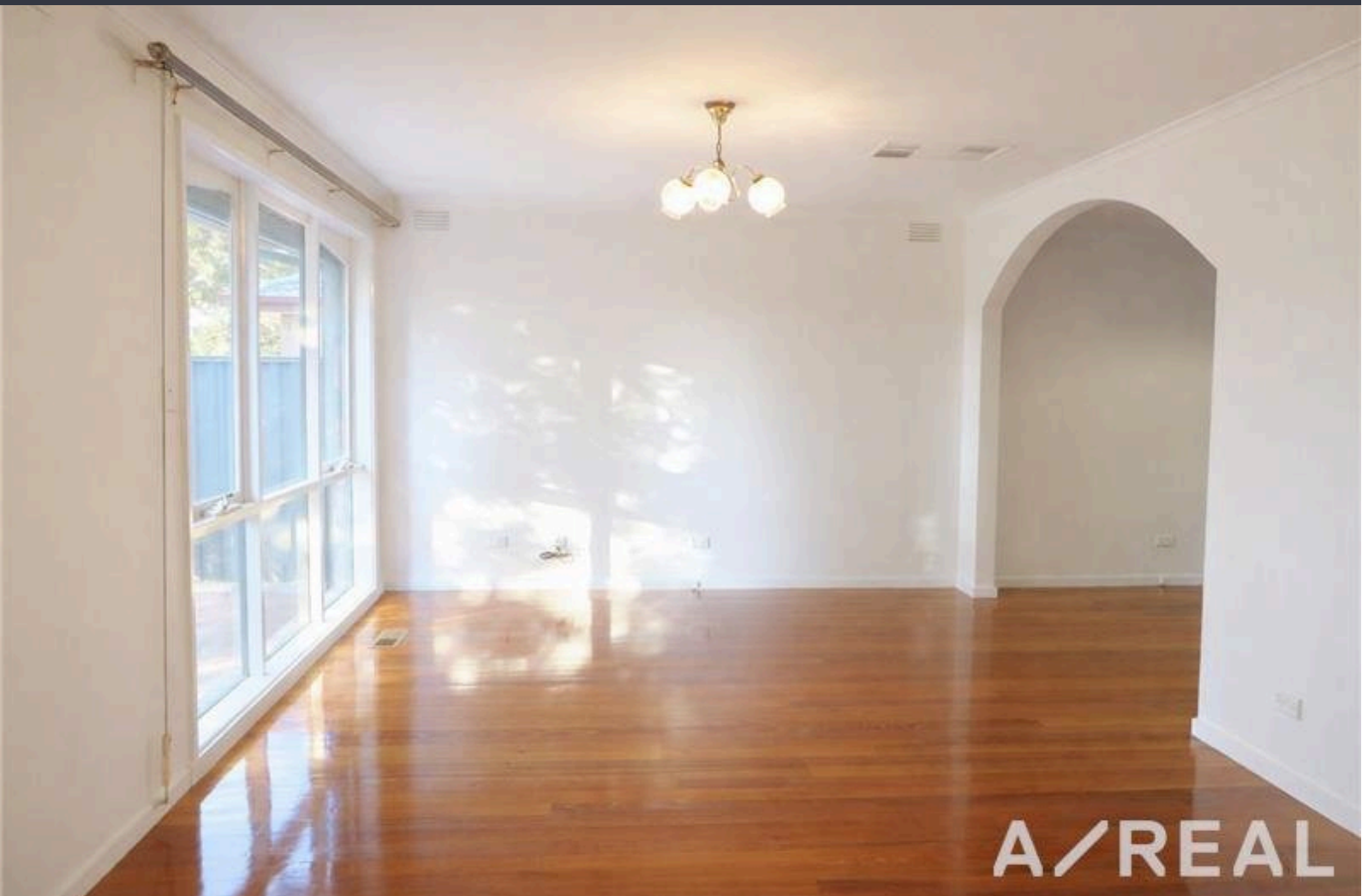


A/REAL



A/REAL

A/REAL



A/REAL



A/REAL

BOX HILL

Suite 3.4, Level 3, 990 Whitehorse Road, Box Hill. Victoria 3128 | 8686 8388

HAWTHORN EAST

33 Camberwell Road, Hawthorn. Victoria 3123 | 9818 8991

MELBOURNE CBD

Level 7, 99 Queen Street, Melbourne. VIC 3000 | 9818 8991

NORTH

Suites 4 & 5 High Street, Lalor. VIC 3075 | 03 9436 0888

POINT COOK

Entrance C4, Level 1, 2 Main Street, Point Cook. VIC 3030 | 8686 8338

SOUTH MORANG

29 Gorge Road, South Morang. VIC 3752 | 8804 5888

info@areal.com.au