

A Smart Start or Solid Investment in Docklands' Waterfront Lifestyle



For Sale

102/3 Aquitania Way, Docklands VIC 3008

🛏 1 🚿 1

\$400,000-\$430,000

For Sale

102/3 Aquitania Way, Docklands VIC 3008



A Smart Start or Solid Investment in Docklands' Waterfront Lifestyle

Positioned in a peaceful waterfront pocket, this stylish residence at 102/3 Aquitania Way offers a superb blend of modern comfort, lifestyle convenience, and tranquil harbour-side living. Set within one of the most desirable precincts of Melbourne, the home places you moments from vibrant cafes, waterfront promenades, and excellent transport connections.

Designed for relaxed contemporary living, the apartment welcomes you with a light-filled open-plan layout that seamlessly connects the living and dining areas. Floor-to-ceiling windows invite natural light while framing calming neighbourhood views, creating a bright and inviting atmosphere perfect for both everyday living and entertaining.

The modern kitchen is thoughtfully appointed with sleek cabinetry, quality appliances and ample storage, making meal preparation both practical and enjoyable. The living area flows effortlessly to a private outdoor space, ideal for enjoying morning coffee or unwinding after a busy day.

The bedr...



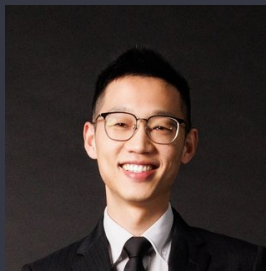
Dan Jian

Sales Executive

0469 024 170

03 9818 8991

dan.jian@areal.com.au



Eddie Zhu

Managing Director - AReal Property Melbourne, Licensed Estate Agent

0452 585 423

03 9818 8991

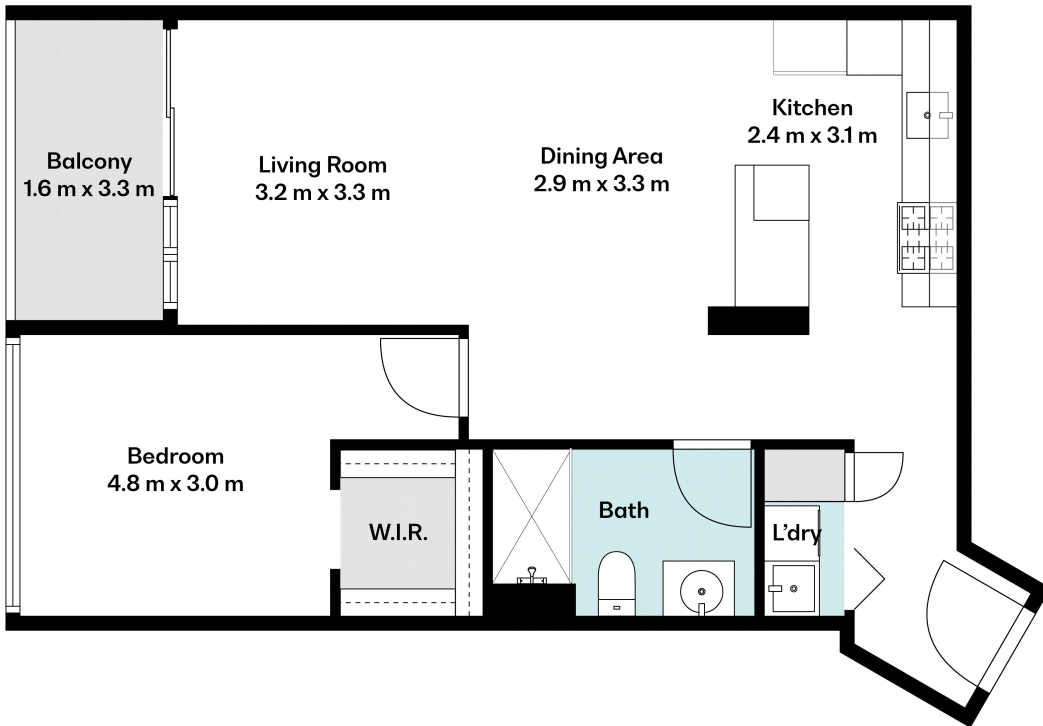
eddie.zhu@areal.com.au

A/REAL



A/REAL







BOX HILL

Suite 3.4, Level 3, 990 Whitehorse Road, Box Hill. Victoria 3128 | 8686 8388

HAWTHORN EAST

33 Camberwell Road, Hawthorn. Victoria 3123 | 9818 8991

MELBOURNE CBD

Level 7, 99 Queen Street, Melbourne. VIC 3000 | 9818 8991

NORTH

Suites 4 & 5, Level 1, 494 High Street, Lalor. VIC 3075 | 03 9436 0888

POINT COOK

Entrance C4, Level 1, 2 Main Street, Point Cook. VIC 3030 | 8686 8338

SOUTH MORANG

29 Gorge Road, South Morang. VIC 3752 | 8804 5888

info@areal.com.au

areal.com.au