

## High-end luxury along the Yarra River



## For Sale

G12/627 Victoria Street, Abbotsford VIC 3067

 1  1

\$400,000-\$440,000

## For Sale

G12/627 Victoria Street, Abbotsford VIC 3067



### High-end luxury along the Yarra River

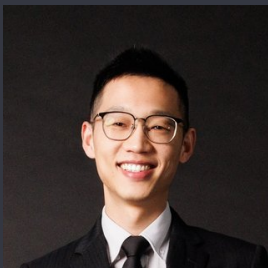
Taking pride of place along the Yarra River in the renowned Park House complex, this refined 1 bedroom, 1 bathroom apartment delivers a lifestyle of effortless luxury and ground floor convenience, sure to capture the hearts of market entrants, downsizers and investors.

Striking in finish, floor-to-ceiling windows draw an abundance of natural light to the open-plan living and dining domain, including a state-of-the-art kitchen flaunting premium Gaggenau cooking appliances, integrated fridge/freezer and beautiful stone surfaces. Timber floors further enhance interior spaces, before unfolding outdoors to a huge private terrace - creating a stunning setting to relax or entertain.

Further prestige is displayed by a 25m indoor swimming pool, timber-lined sauna, fully-equipped gym, golf simulator, meeting lounge and library, central landscaped garden and BBQ area.

Located within steps of Victoria Gardens shopping centre, Studley Park and transport into the CBD.

Disclaimer: We have in p...



**Eddie Zhu**

Managing Director - AReal Property Melbourne, Licensed Estate Agent

0452 585 423

03 9818 8991

eddie.zhu@areal.com.au



**Dan Jian**

Sales Executive

0469 024 170

03 9818 8991

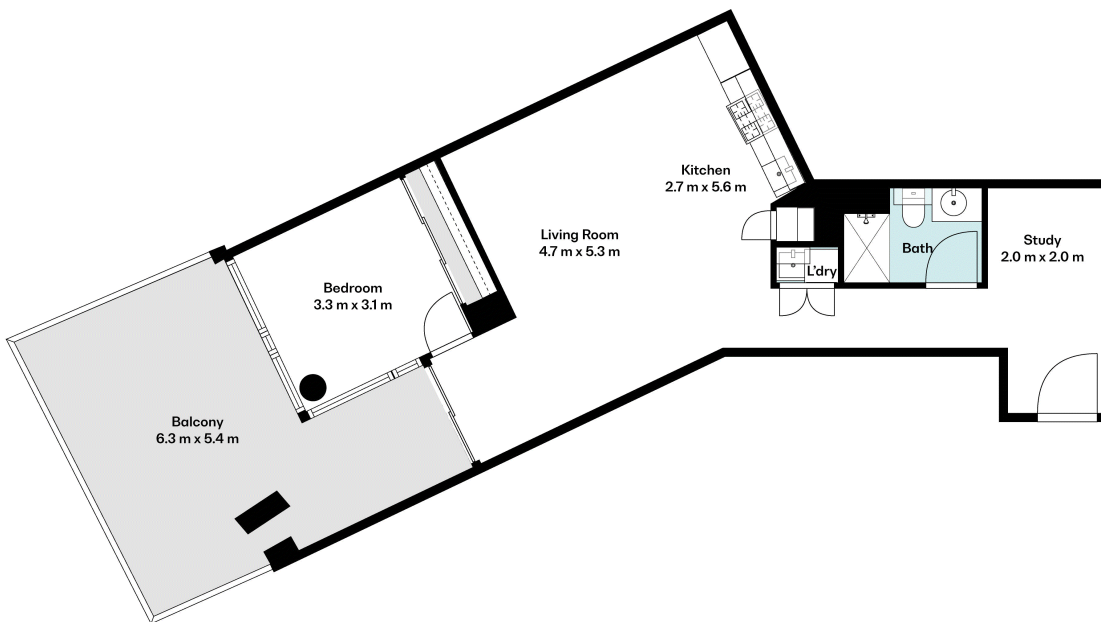
dan.jian@areal.com.au

A/REAL



A/REAL







#### BOX HILL

Suite 3.4, Level 3, 990 Whitehorse Road, Box Hill. Victoria 3128 | 8686 8388

#### HAWTHORN EAST

33 Camberwell Road, Hawthorn. Victoria 3123 | 9818 8991

#### MELBOURNE CBD

Level 7, 99 Queen Street, Melbourne. VIC 3000 | 9818 8991

#### NORTH

Suites 4 & 5 High Street, Lalor. VIC 3075 | 03 9436 0888

#### POINT COOK

Entrance C4, Level 1, 2 Main Street, Point Cook. VIC 3030 | 8686 8338

#### SOUTH MORANG

29 Gorge Road, South Morang. VIC 3752 | 8804 5888

[info@areal.com.au](mailto:info@areal.com.au)

[areal.com.au](http://areal.com.au)