

Elevated Bay Views with Glimpses of the City Skyline



For Sale

1109/3-5 St Kilda Road, St Kilda VIC 3182

 2  2

\$630,000-\$670,000

For Sale

1109/3-5 St Kilda Road, St Kilda VIC 3182



Elevated Bay Views with Glimpses of the City Skyline

Elevated on the eleventh floor of the acclaimed STK complex, this beautifully resolved two-bedroom, two-bathroom residence delivers the ultimate urban lifestyle. Framed by sweeping outlooks across Port Phillip Bay, Albert Park Lake and the city skyline, this apartment combines striking views, a private undercover balcony, and true lock-up-and-leave ease in one of Melbourne's most connected lifestyle precincts.

Inside, the apartment feels immediately open, calm and light-filled, with dark-toned American oak flooring adding warmth to the expansive living and dining domain. Full-height sliding doors extend the space to a generous balcony with the skyline as your backdrop. The stone-finished kitchen is sleek and highly functional, appointed with quality stainless steel appliances and excellent storage, while a concealed laundry keeps day-to-day living streamlined.

Both bedrooms are well proportioned and filled with natural light, each enjoying built-in robes and privacy, with the second...



Keith Chan

Sales Executive, Auctioneer

0410 234 188

03 9818 8991

keith.chan@areal.com.au



Kay Lim

Sales Executive, Licensed Estate Agent

0416 260 421

03 8686 8388

kay.lim@areal.com.au

A/REAL



A/REAL



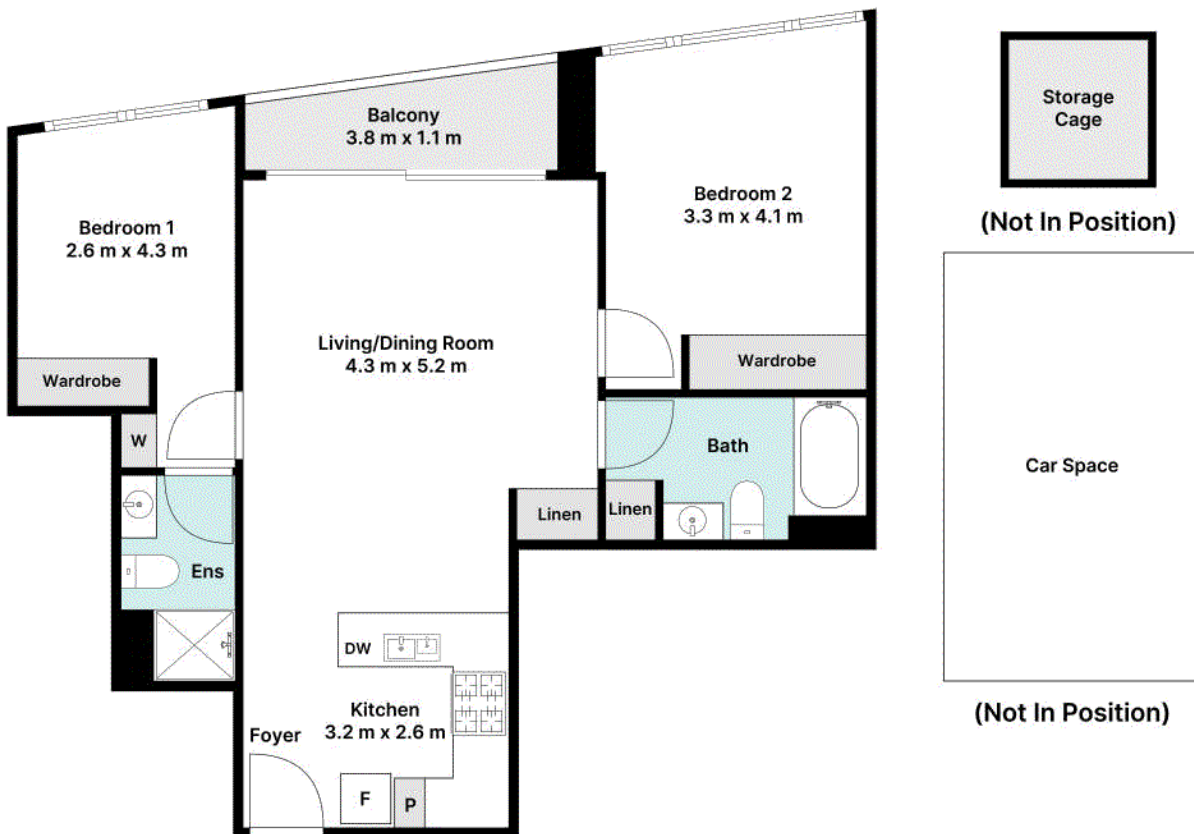
A/REAL



A/REAL



A/REAL



Floorplan

BOX HILL

Suite 3.4, Level 3, 990 Whitehorse Road, Box Hill. Victoria 3128 | 8686 8388

HAWTHORN EAST

33 Camberwell Road, Hawthorn. Victoria 3123 | 9818 8991

MELBOURNE CBD

Level 7, 99 Queen Street, Melbourne. VIC 3000 | 9818 8991

NORTH

Suites 4 & 5 High Street, Lalor. VIC 3075 | 03 9436 0888

POINT COOK

Entrance C4, Level 1, 2 Main Street, Point Cook. VIC 3030 | 8686 8338

SOUTH MORANG

29 Gorge Road, South Morang. VIC 3752 | 8804 5888

info@areal.com.au