

Family Space, Entertaining Power and Parkside Position



For Sale

20 Paul Crescent, Epping VIC 3076

 4  2  750sqm

\$890,000-\$979,000

For Sale

20 Paul Crescent, Epping VIC 3076

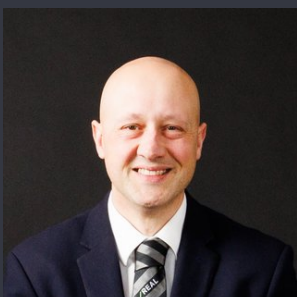
 4  2  750sqm

Family Space, Entertaining Power and Parkside Position

- Opposite parkland in a tightly held Epping pocket
- Substantial 750m² allotment with drive-through access
- Multiple living zones including lounge, meals and rumpus
- Renovated kitchen with 40mm benchtops and six-burner cooktop
- Massive undercover entertaining area perfect for large gatherings
- Four bedrooms including downstairs master with ensuite and WIR
- Ducted heating, split system cooling and excellent storage throughout
- Close to Epping Views Primary, Epping Primary, Pacific Epping and Aurora Village

Set directly opposite parkland in one of Epping's most tightly held pockets, this beautifully updated double-storey home delivers the space, flexibility and lifestyle that growing families are searching for. Positioned on a substantial 750m² allotment, it's a home designed to handle both everyday living and large-scale entertaining with ease.

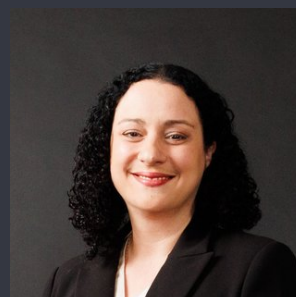
Step inside to discover a warm and inviting interior, where hardwood floorboards, a striking timber staircase and an abundance of na...



Kaan Ristic

Senior Sales Executive, Licensed Estate Agent

0412 803 075
03 9436 0888
kaan.ristic@areal.com.au



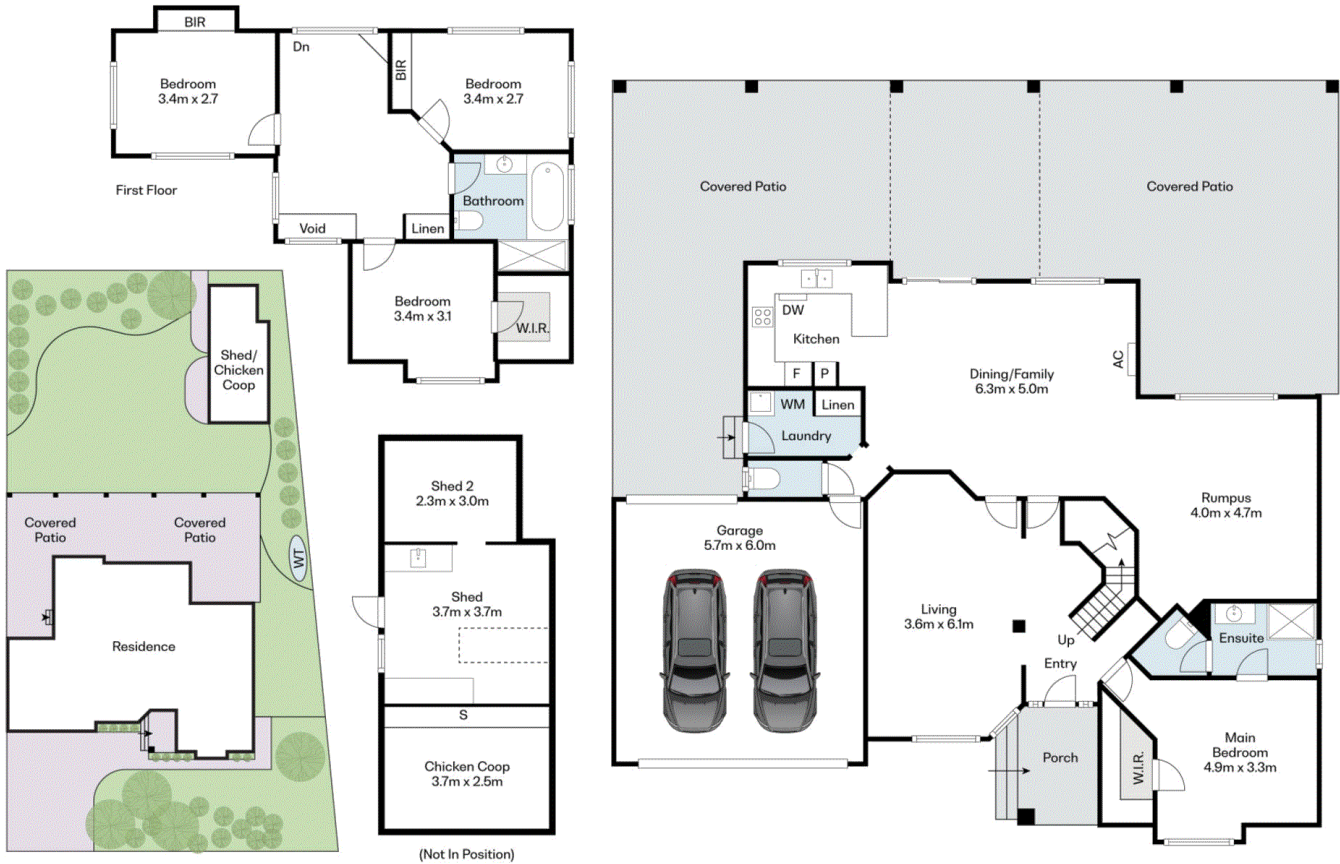
Christie Barnes

Sales Assistant to Kaan Ristic

0405 873 289
03 9436 0888
christie.barnes@areal.com.au







BOX HILL

Suite 3.4, Level 3, 990 Whitehorse Road, Box Hill. Victoria 3128 | 8686 8388

HAWTHORN EAST

33 Camberwell Road, Hawthorn. Victoria 3123 | 9818 8991

MELBOURNE CBD

Level 7, 99 Queen Street, Melbourne. VIC 3000 | 9818 8991

NORTH

Suites 4 & 5 High Street, Lalor. VIC 3075 | 03 9436 0888

POINT COOK

Entrance C4, Level 1, 2 Main Street, Point Cook. VIC 3030 | 8686 8338

SOUTH MORANG

29 Gorge Road, South Morang. VIC 3752 | 8804 5888

info@areal.com.au

areal.com.au