

Light, luxury and lifestyle at the  
city's edge



For Sale

5709/639 Little Lonsdale Street, Melbourne VIC 3000

 2  2

\$795,000-\$870,000

## For Sale

5709/639 Little Lonsdale Street, Melbourne VIC 3000



### Light, luxury and lifestyle at the city's edge

Elevated above the CBD, this stunning two-bedroom, two-bathroom residence delivers an unforgettable Melbourne lifestyle, wrapped in breathtaking panoramic views across Victoria Harbour, Docklands and the bay horizon. Expansive floor-to-ceiling glazing floods the open-plan living and dining zone with natural light, while life here is elevated by concierge service and an amenity suite that rivals a five-star hotel.

The kitchen is designed for home cooking and entertaining, with stone benchtops, excellent storage, and quality European appliances. Timber flooring adds polish through the living areas, while both bedrooms are quietly positioned with plush carpeting and built-in robes. Two sleek bathrooms, including a main ensuite, are finished with floor-to-ceiling tiling, stone-topped vanities and walk-in showers, enhanced by double glazing and integrated heating and cooling throughout the residence for year-round comfort.

Set within the coveted West Side Place complex, residents enjoy t...



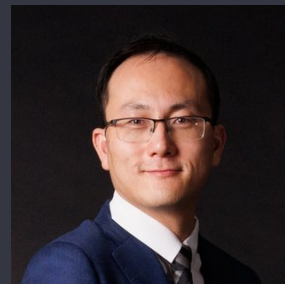
### Andy Yuan

Senior Sales Executive, Licensed Estate Agent, Auctioneer

0406 217 388

03 8686 8388

[andy.yuan@areal.com.au](mailto:andy.yuan@areal.com.au)



### Dave Tang

Sales Executive

0432 523 853

03 8686 8388

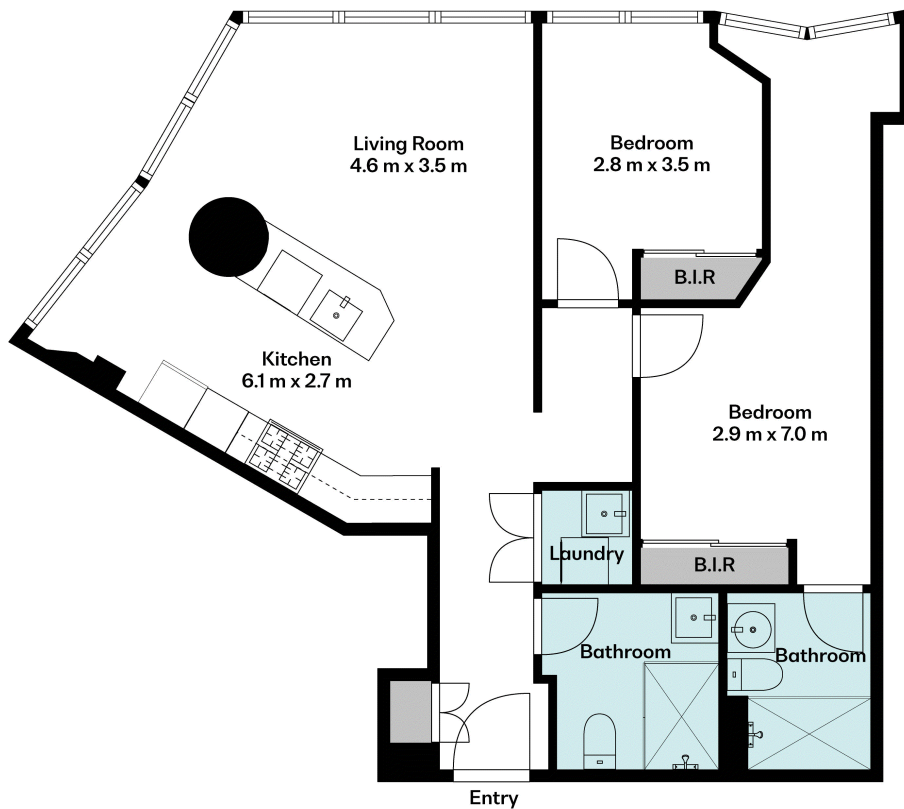
[dave.tang@areal.com.au](mailto:dave.tang@areal.com.au)

A/REAL



A/REAL





## BOX HILL

Suite 3.4, Level 3, 990 Whitehorse Road, Box Hill. Victoria 3128 | 8686 8388

## HAWTHORN EAST

33 Camberwell Road, Hawthorn. Victoria 3123 | 9818 8991

## MELBOURNE CBD

Level 7, 99 Queen Street, Melbourne. VIC 3000 | 9818 8991

## NORTH

Suites 4 & 5 High Street, Lalor. VIC 3075 | 03 9436 0888

## POINT COOK

Entrance C4, Level 1, 2 Main Street, Point Cook. VIC 3030 | 8686 8338

## SOUTH MORANG

29 Gorge Road, South Morang. VIC 3752 | 8804 5888

[info@areal.com.au](mailto:info@areal.com.au)

[areal.com.au](http://areal.com.au)