

## A Custom Design for an Impressive Lifestyle



## For Sale

8 Ratcliffe Close, Mill Park VIC 3082

 4  3  605sqm

Awaiting Price Guide

## For Sale

8 Ratcliffe Close, Mill Park VIC 3082

 4  3  605sqm

### A Custom Design for an Impressive Lifestyle

Crafted on the cutting edge, this unforgettable residence's chic sophistication and superb setting define a family sanctuary of unrivalled luxury in a sought-after neighbourhood. Exquisitely designed with meticulous attention to detail, this luxurious four-bedroom, three-bathroom retreat seamlessly blends indoor and outdoor spaces for year-round enjoyment. Beyond a striking red-brick facade, the free-flowing layout invites rest, play and entertainment in equal measure, opening to hydronic-heated polished concrete floors, high ceilings and banks of oversized poolside windows. At its heart, an expansive open-plan living and dining zone spills into the alfresco area, enclosed with electric blinds, where an integrated mains gas BBQ kitchen and self-cleaning, solar-heated pool set the stage for memorable entertaining. Sleek Caesarstone benches feature within the gourmet kitchen and butler's pantry, where a suite of quality Smeg appliances, including twin pyrolytic ovens, dishwasher and induc...



#### Justin Sciola

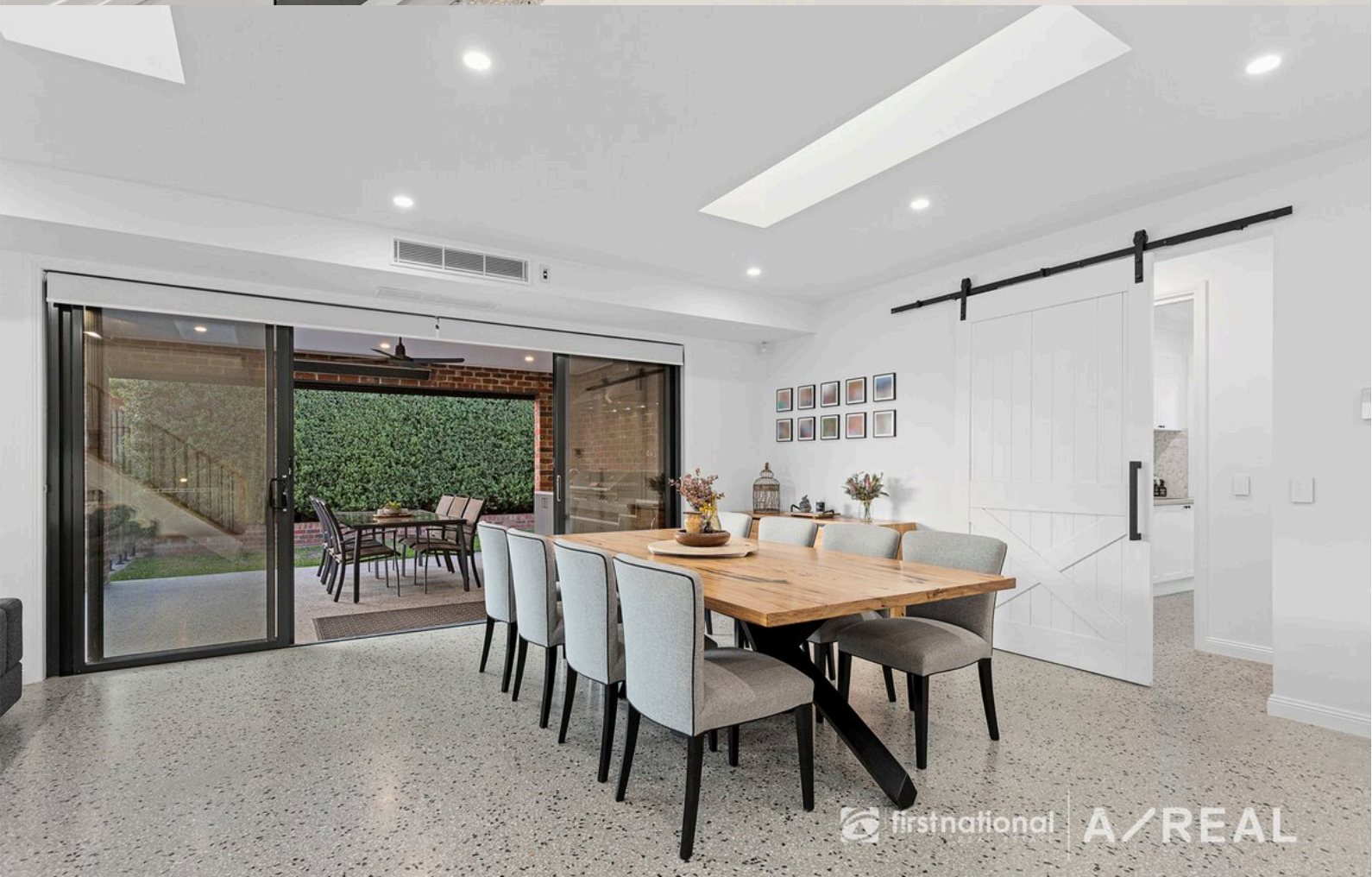
Sales Director | Auctioneer - AReal Property South Morang

0423 916 416

03 8804 5888

[justin.sciola@areal.com.au](mailto:justin.sciola@areal.com.au)



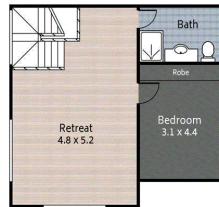




firstnational REAL ESTATE A/REAL



//FLOOR PLAN/Ground Floor



//FLOOR PLAN/First Floor



//SITE PLAN

firstnational REAL ESTATE

# A/REAL

Ben Pellicori  
0402 407 446

Justin Sciola  
0423 916 416

8 Ratcliffe Close  
Mill Park

605 m<sup>2</sup>

4 Bed

3 Bath

2 Car

Please note: This floor plan has been produced for marketing purposes and should be used as a guide only. All measurements are approximate and any person using this information should rely on their own enquiries.

Produced by MAISONSNAP.COM.AU

## BOX HILL

Suite 3.4, Level 3, 990 Whitehorse Road, Box Hill. Victoria 3128 | 8686 8388

## HAWTHORN EAST

33 Camberwell Road, Hawthorn. Victoria 3123 | 9818 8991

## MELBOURNE CBD

Level 7, 99 Queen Street, Melbourne. VIC 3000 | 9818 8991

## NORTH

Suites 4 & 5 High Street, Lalor. VIC 3075 | 03 9436 0888

## POINT COOK

Entrance C4, Level 1, 2 Main Street, Point Cook. VIC 3030 | 8686 8338

## SOUTH MORANG

29 Gorge Road, South Morang. VIC 3752 | 8804 5888

[info@areal.com.au](mailto:info@areal.com.au)