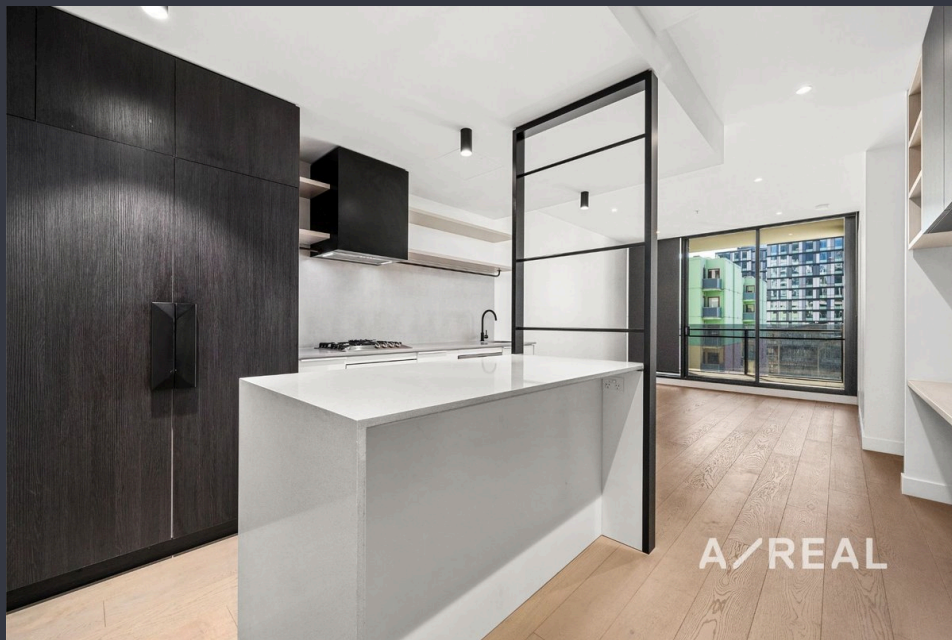


## Apartment Next to Melbourne University



For Lease

611/145 Queensberry Street, Carlton VIC 3053

 2  2

\$760 per Week

## For Lease

611/145 Queensberry Street, Carlton VIC 3053



### Apartment Next to Melbourne University

\*\*Scheduling your property inspection is now a breeze! Simply click on the "Book an Inspection" or "Request a Time" button to secure your appointment. You'll instantly receive a confirmation and be kept up-to-date with any alterations or cancellations concerning your scheduled visit. Please be aware, inspections may be subject to cancellation if no bookings are registered. Make your booking today and take the first step in finding your ideal home\*\*



This apartment is located close to the heart of city, turn the corner from your street to find yourself at the tram stop on Swanston Street that takes you directly to Melbourne University (2 minutes), or straight through to the middle of the Melbourne CBD. The trams will take you to the door step of RMIT, Melbourne Central Station, Bourke Street Mall and Flinders Street.

This apartment is conveniently located close to the heart of the city. Just around the corner from your street, you'll find a tram stop on Swanston Street, providing dir...



#### Alex Do

Leasing Specialist

0433 855 306

03 9818 8991

[alex.do@areal.com.au](mailto:alex.do@areal.com.au)





## BOX HILL

Suite 3.4, Level 3, 990 Whitehorse Road, Box Hill. Victoria 3128 | 8686 8388

## HAWTHORN EAST

33 Camberwell Road, Hawthorn. Victoria 3123 | 9818 8991

## MELBOURNE CBD

Level 7, 99 Queen Street, Melbourne. VIC 3000 | 9818 8991

## NORTH

Suites 4 & 5 High Street, Lalor. VIC 3075 | 03 9436 0888

## POINT COOK

Entrance C4, Level 1, 2 Main Street, Point Cook. VIC 3030 | 8686 8338

## SOUTH MORANG

29 Gorge Road, South Morang. VIC 3752 | 8804 5888

[info@areal.com.au](mailto:info@areal.com.au)