

## Refined Riverside Living at Park House



### For Sale

B912/627 Victoria Street, Abbotsford VIC 3067

 1  1

\$530,000-\$560,000

## For Sale

B912/627 Victoria Street, Abbotsford VIC 3067



### Refined Riverside Living at Park House

Positioned within the prestigious Park House development, designed by SJB Architecture with interiors by Sue Carr, this sophisticated one-bedroom residence delivers an exceptional standard of contemporary living in a coveted riverside setting. Defined by clean architectural lines and premium finishes, the apartment offers a seamless open-plan layout where the living and dining domain flows effortlessly to a private balcony, inviting natural light and creating an ideal space for relaxed living or entertaining.

The well-appointed kitchen is crafted with quality stone benchtops, integrated appliances, gas cooking and refined cabinetry, balancing practicality with elegant design. The generously sized bedroom, modern bathroom featuring frameless glass shower, mirrored storage and premium tapware. Additional inclusions such as a European laundry, ducted heating and cooling, secure intercom entry and storage enhance everyday comfort and convenience.

Residents of Park House enjoy exclusiv...



**Aaron Tan**

Sales Executive

0421 247 332

03 8686 8388

[aaron.tan@areal.com.au](mailto:aaron.tan@areal.com.au)



**Nick Marinakis**

Project Sales Director, Licensed Estate Agent

0413 686 049

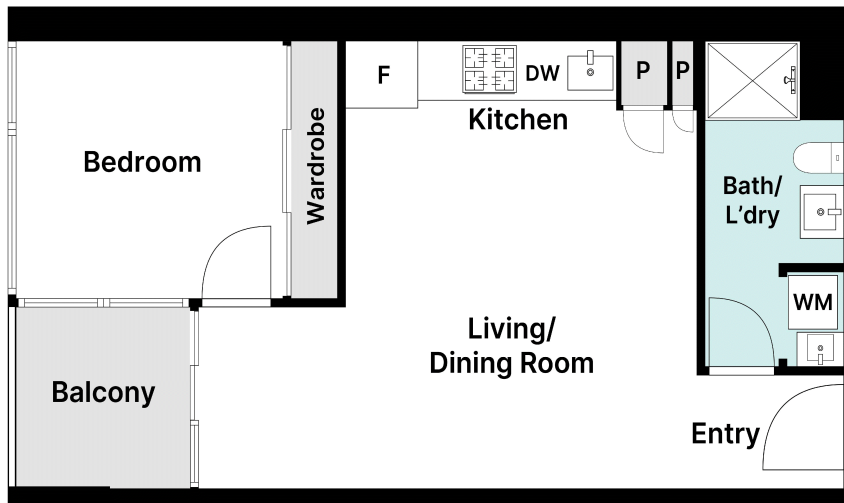
03 8686 8388

[nick.marinakis@areal.com.au](mailto:nick.marinakis@areal.com.au)



A/REAL





Floor Plan

## BOX HILL

Suite 3.4, Level 3, 990 Whitehorse Road, Box Hill. Victoria 3128 | 8686 8388

## HAWTHORN EAST

33 Camberwell Road, Hawthorn. Victoria 3123 | 9818 8991

## MELBOURNE CBD

Level 7, 99 Queen Street, Melbourne. VIC 3000 | 9818 8991

## NORTH

Suites 4 & 5 High Street, Lalor. VIC 3075 | 03 9436 0888

## POINT COOK

Entrance C4, Level 1, 2 Main Street, Point Cook. VIC 3030 | 8686 8338

## SOUTH MORANG

29 Gorge Road, South Morang. VIC 3752 | 8804 5888

[info@areal.com.au](mailto:info@areal.com.au)