

Charming retreat amongst all
the action



For Sale

208/24 Oleander Drive, Mill Park VIC 3082

 2  2

\$390,000

For Sale

208/24 Oleander Drive, Mill Park VIC 3082



Charming retreat amongst all the action

This 2 bedroom sanctuary nestled in a vibrant pocket of Mill Park is sure to impress. Every corner of this tidy residence radiates with light, amplifying the open floor plan that seamlessly unites the kitchen, living, and dining areas into a pleasant comfortable space, perfect for making cherished memories. Slide open the doors to reveal a cosy balcony-perfect for relaxation or entertaining under the open sky. The master bedroom offers a private haven with a walk-in wardrobe and ensuite, while the second bedroom, adorned with a built-in wardrobe, enjoys access to the neatly-appointed central bathroom. Practicality is enhanced with a single secure car park, additional storage, and an internal laundry. Positioned amidst a hive of conveniences including cafes like Against The Grind less than 200m away, you are mere moments from Westfield Plenty Valley, Central South Morang Shops, various train stations, parks, schools, and a selection of dining experiences. Inspect to discover a space where c...



Justin Sciola

Sales Director | Auctioneer - AReal Property South Morang

0423 916 416

03 8804 5888

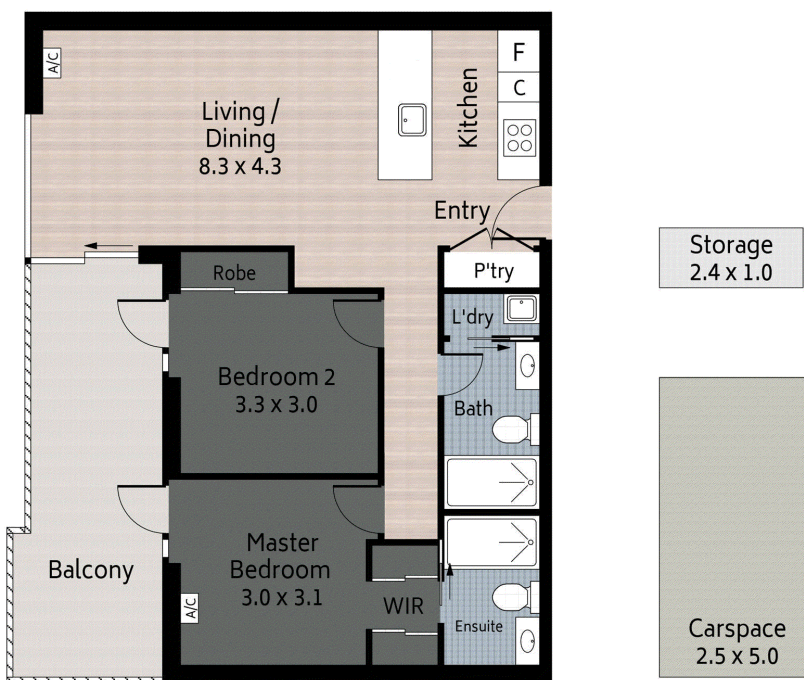
justin.sciola@areal.com.au







firstnational REAL ESTATE | A/REAL







//FLOOR PLAN

firstnational REAL ESTATE

A/REAL

Ben Pellicori
0402 407 446

208/24 Oleander Drive
Mill Park

-  92 m²
-  2 Bed
-  2 Bath
-  1 Car

Please note: This floor plan has been produced for marketing purposes and should be used as a guide only. All measurements are approximate and any person using this information should rely on their own enquiries.

Produced by MAISONSNAP.COM.AU

BOX HILL

Suite 3.4, Level 3, 990 Whitehorse Road, Box Hill. Victoria 3128 | 8686 8388

HAWTHORN EAST

33 Camberwell Road, Hawthorn. Victoria 3123 | 9818 8991

MELBOURNE CBD

Level 7, 99 Queen Street, Melbourne. VIC 3000 | 9818 8991

NORTH

Suites 4 & 5 High Street, Lalor. VIC 3075 | 03 9436 0888

POINT COOK

Entrance C4, Level 1, 2 Main Street, Point Cook. VIC 3030 | 8686 8338

SOUTH MORANG

29 Gorge Road, South Morang. VIC 3752 | 8804 5888

info@areal.com.au