

## Luxury penthouse with park views



## For Sale

1005/18 Lilydale Grove, Hawthorn East VIC 3123

 3  3

POA

## For Sale

1005/18 Lilydale Grove, Hawthorn East VIC 3123



### Luxury penthouse with park views

Elevated on the 10th floor of the luxury ESQUIRE Hawthorn complex, this expansive penthouse delivers the rare combination of true house-like proportions, hotel-style amenities and a secluded inner-east address with leafy outlooks across the Victoria Road Reserve. Designed to elevate everyday life, this residence pairs refined finishes with a highly functional, low-maintenance layout, all within one of Melbourne's most prized blue-chip pockets.

A wide entry introduces an expansive open-plan domain, where the living room flows to a dedicated dining zone and a sleek marble kitchen with a central island and ample storage options. Warm timber flooring and ducted reverse-cycle heating and cooling enhance day-to-day comfort, while expansive glazing brings in natural light and opens to an oversized balcony, creating a genuine indoor-outdoor extension for relaxed weekends above the treetops.

Three generous bedrooms each feature their own elegant ensuite, delivering an uncompromising standard...



**Aaron Tan**

Sales Executive

0421 247 332

03 8686 8388

[aaron.tan@areal.com.au](mailto:aaron.tan@areal.com.au)



**Nick Marinakis**

Project Sales Director, Licensed Estate Agent

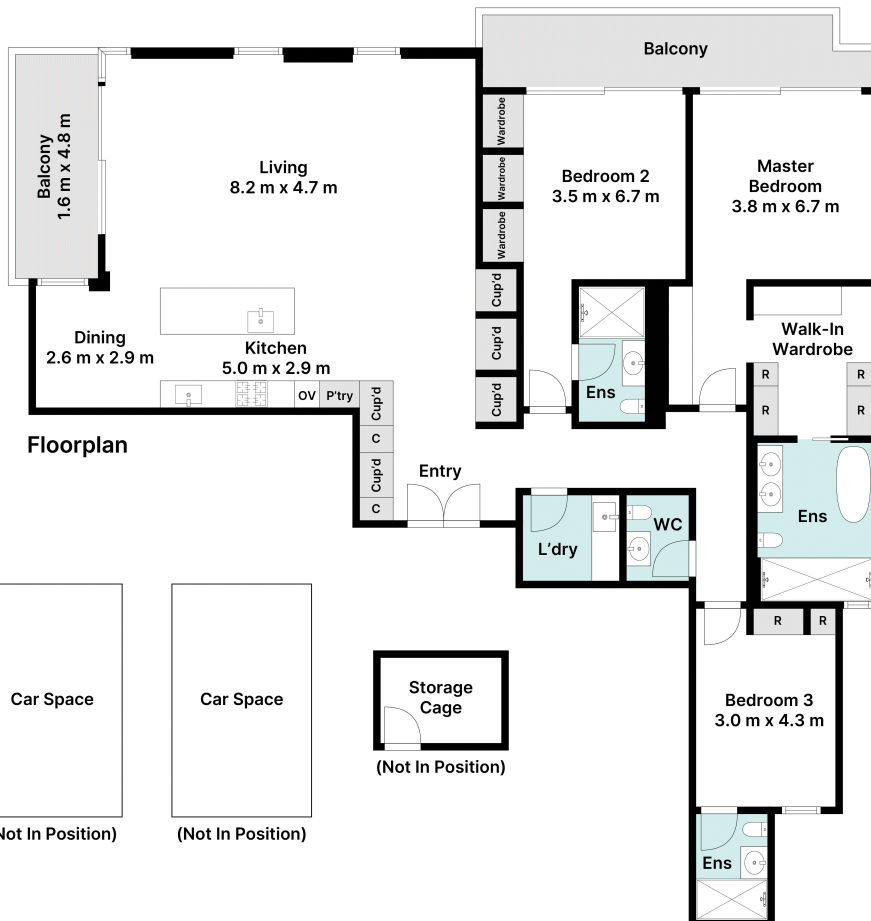
0413 686 049

03 8686 8388

[nick.marinakis@areal.com.au](mailto:nick.marinakis@areal.com.au)







## BOX HILL

Suite 3.4, Level 3, 990 Whitehorse Road, Box Hill. Victoria 3128 | 8686 8388

## HAWTHORN EAST

33 Camberwell Road, Hawthorn. Victoria 3123 | 9818 8991

## MELBOURNE CBD

Level 7, 99 Queen Street, Melbourne. VIC 3000 | 9818 8991

## NORTH

Suites 4 & 5 High Street, Lalor. VIC 3075 | 03 9436 0888

## POINT COOK

Entrance C4, Level 1, 2 Main Street, Point Cook. VIC 3030 | 8686 8338

## SOUTH MORANG

29 Gorge Road, South Morang. VIC 3752 | 8804 5888

[info@areal.com.au](mailto:info@areal.com.au)