

Connected Clayton living with a Family-Focused Floorplan



For Sale

2/34 Evelyn Street, Clayton VIC 3168

 4  3

\$938,500

For Sale

2/34 Evelyn Street, Clayton VIC 3168

 4  3

Connected Clayton living with a Family-Focused Floorplan

Set within a sought-after Clayton pocket, this four-bedroom townhouse delivers a practical family layout with everyday convenience at its core.

Inside, timber floors extend through a gallery-style entry hall and into an open-plan kitchen and dining zone, creating a sense of space from the outset. The adjoining living area is bright and welcoming, offering perfect space for daily life, entertaining, and relaxed evenings at home, all supported by a functional floorplan designed to work with busy family routines.

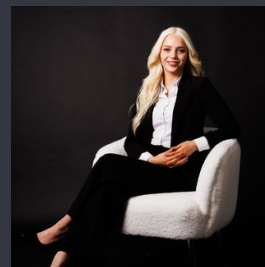
From the dining domain, sliding doors open to a private rear terrace with a low-maintenance backyard and easy-care surrounds, making outdoor time simple and stress-free. Accommodation is thoughtfully zoned with one bedroom on the ground floor, ideal for guests, teens, or a dedicated work-from-home set-up, while three further bedrooms are positioned upstairs. The main bedroom includes a walk-in robe and ensuite, complemented by a family bathroom and separate toilet, with three...



Andy Yuan

Senior Sales Executive, Licensed Estate Agent, Auctioneer

0406 217 388
03 8686 8388
andy.yuan@areal.com.au



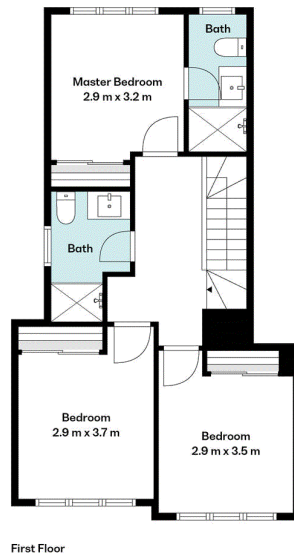
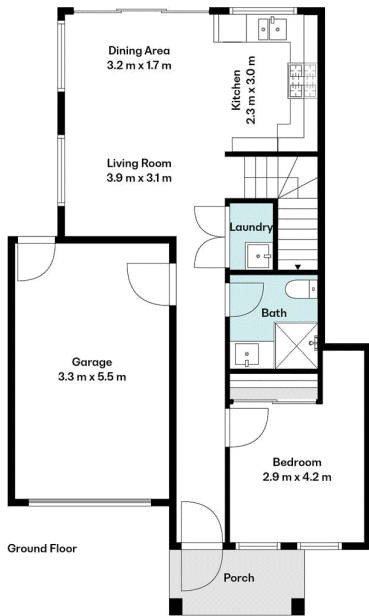
Sophia Christopoulos

Sales Assistant to Team Andy and Dave

0406 415 988
03 8686 8388
sophia.christopoulos@areal.com.au







BOX HILL

Suite 3.4, Level 3, 990 Whitehorse Road, Box Hill. Victoria 3128 | 8686 8388

HAWTHORN EAST

33 Camberwell Road, Hawthorn. Victoria 3123 | 9818 8991

MELBOURNE CBD

Level 7, 99 Queen Street, Melbourne. VIC 3000 | 9818 8991

NORTH

Suites 4 & 5 High Street, Lalor. VIC 3075 | 03 9436 0888

POINT COOK

Entrance C4, Level 1, 2 Main Street, Point Cook. VIC 3030 | 8686 8338

SOUTH MORANG

29 Gorge Road, South Morang. VIC 3752 | 8804 5888

info@areal.com.au

areal.com.au