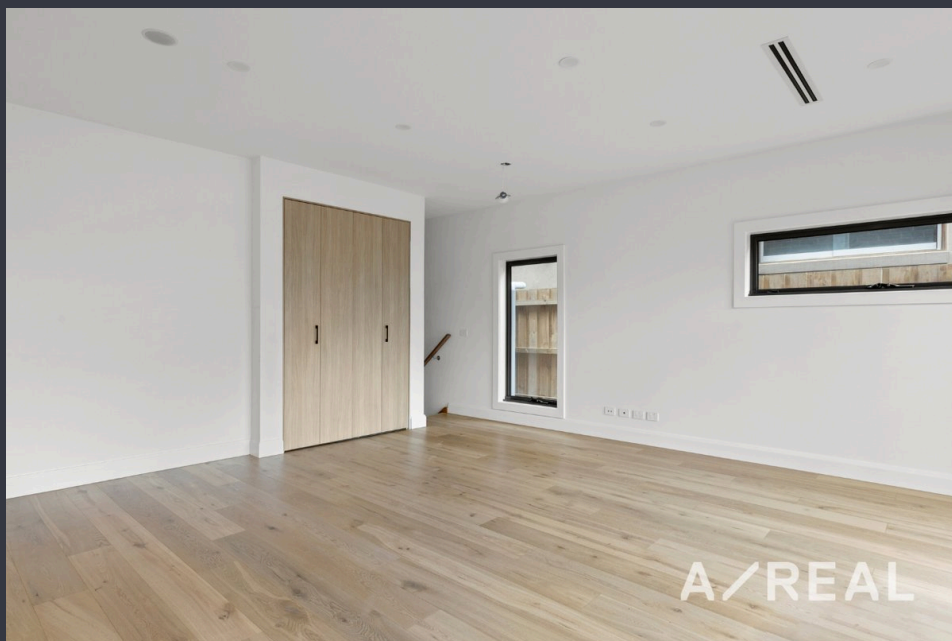


Luxury Low-Maintenance Living in a Prime Bentleigh East Location



For Lease

1/11 Caleb Street, Bentleigh East VIC 3165

 3  2

\$950 per Week

For Lease

1/11 Caleb Street, Bentleigh East VIC 3165

 3  2

Luxury Low-Maintenance Living in a Prime Bentleigh East Location

Scheduling your property inspection is now a breeze! Simply click on the "Book an Inspection" or "Request a Time" button to secure your appointment. You'll instantly receive a confirmation and be kept up-to-date with any alterations or cancellations concerning your scheduled visit. Please be aware, inspections may be subject to cancellation if no bookings are registered. Make your booking today and take the first step in finding your ideal home

This sophisticated tri-level townhouse offers premium, low-maintenance living filled with natural light and quality finishes throughout. The open-plan living and dining area features warm timber flooring and flows seamlessly to a stylish, streamlined kitchen complete with stone benchtops, a walk-in pantry, quality appliances and a breakfast bench—perfect for everyday living and entertaining.

Upstairs comprises three well-sized bedrooms, including a generous master suite with walk-in robe and a sleek ensuite. A fully tiled central bathroom...



Alex Do

Leasing Specialist

0433 855 306

03 9818 8991

alex.do@areal.com.au



Amanda Zhou

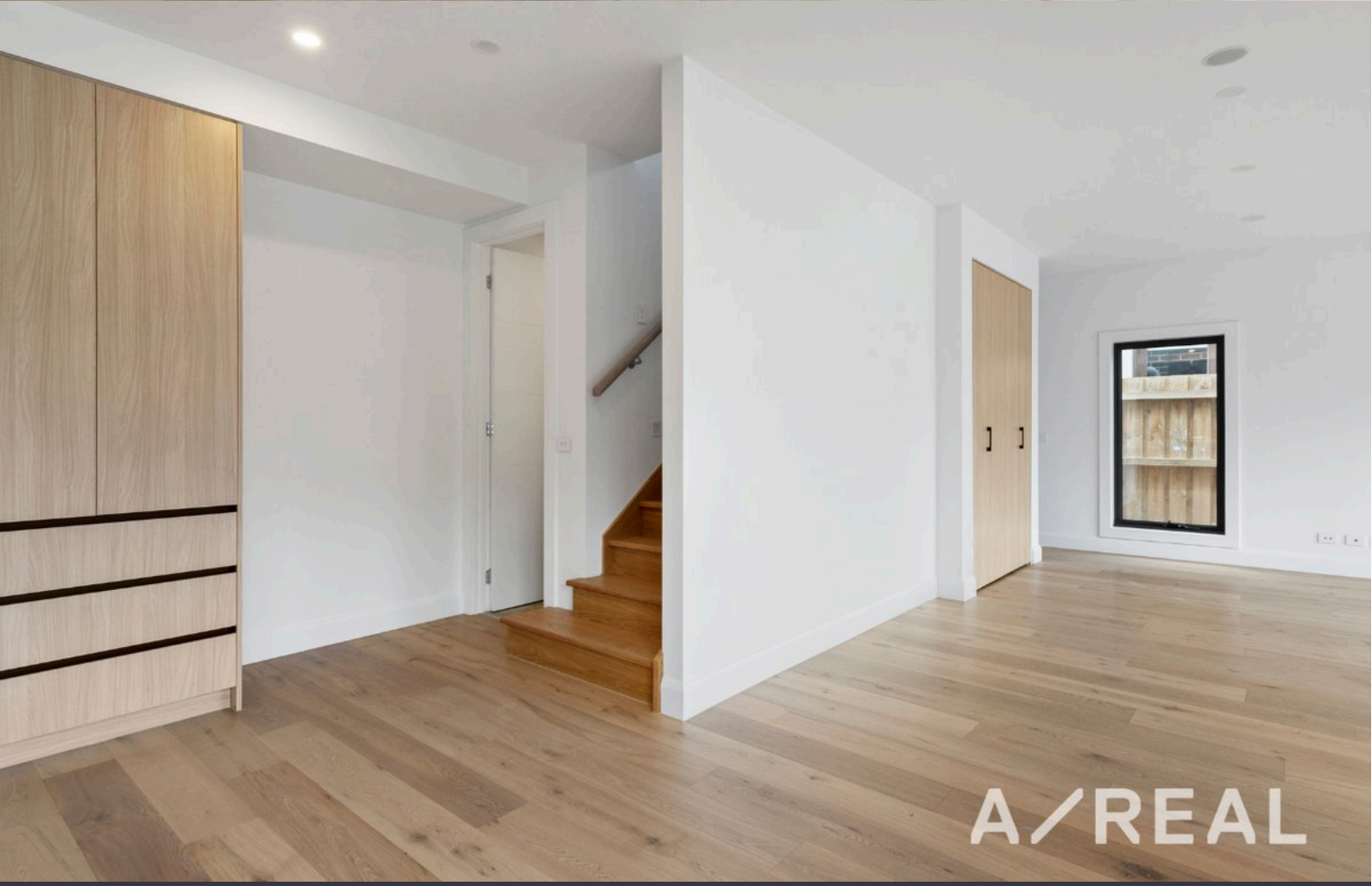
Relationship Manager

03 9818 8991

amanda.zhou@areal.com.au



A/REAL



A/REAL

A/REAL



BOX HILL

Suite 3.4, Level 3, 990 Whitehorse Road, Box Hill. Victoria 3128 | 8686 8388

HAWTHORN EAST

33 Camberwell Road, Hawthorn. Victoria 3123 | 9818 8991

MELBOURNE CBD

Level 7, 99 Queen Street, Melbourne. VIC 3000 | 9818 8991

NORTH

Suites 4 & 5 High Street, Lalor. VIC 3075 | 03 9436 0888

POINT COOK

Entrance C4, Level 1, 2 Main Street, Point Cook. VIC 3030 | 8686 8338

SOUTH MORANG

29 Gorge Road, South Morang. VIC 3752 | 8804 5888

info@areal.com.au