

Spacious Family Home with Separate Home Office in a Quiet Court Setting



For Lease

6 Grasmere Court, Wantirna VIC 3152

 4  2

\$820 per Week

For Lease

6 Grasmere Court, Wantirna VIC 3152

 4  2

Spacious Family Home with Separate Home Office in a Quiet Court Setting

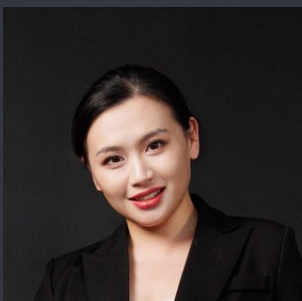
Privately positioned in a peaceful court directly opposite a children's playground, this deceptively spacious residence offers a superb combination of modern updates, family-friendly proportions, and flexible living options.

Freshly painted interiors are filled with natural light and complemented by polished timber floorboards, creating a warm and welcoming atmosphere throughout. A generous lounge and adjoining dining area enjoy leafy garden outlooks, ideal for both everyday living and entertaining.

At the heart of the home, the newly renovated kitchen features stone-look benchtops, a breakfast bar, and quality appliances including an Asko dishwasher. Flowing seamlessly into the meals and family zone, this space is designed for comfort and connection.

Outdoor entertaining is well catered for with a covered alfresco deck overlooking a neat, low-maintenance backyard—perfect for families seeking space without the upkeep.

Accommodation includes four well-proportioned bedrooms. The mas...



Renata Xiang

Business Development Manager

0437 626 898

03 9116 5797

renata.xiang@areal.com.au







Floor Plan



BOX HILL

Suite 3.4, Level 3, 990 Whitehorse Road, Box Hill. Victoria 3128 | 8686 8388

HAWTHORN EAST

33 Camberwell Road, Hawthorn. Victoria 3123 | 9818 8991

MELBOURNE CBD

Level 7, 99 Queen Street, Melbourne. VIC 3000 | 9818 8991

NORTH

Suites 4 & 5 High Street, Lalor. VIC 3075 | 03 9436 0888

POINT COOK

Entrance C4, Level 1, 2 Main Street, Point Cook. VIC 3030 | 8686 8338

SOUTH MORANG

29 Gorge Road, South Morang. VIC 3752 | 8804 5888

info@areal.com.au