

## Charming 3-Bedroom Low-Maintenance Family Home in Wyndham Vale



For Lease

19 Fitzrovia Drive, Wyndham Vale VIC 3024

 3  2

\$430 per Week

## For Lease

19 Fitzrovia Drive, Wyndham Vale VIC 3024

 3  2

### Charming 3-Bedroom Low-Maintenance Family Home in Wyndham Vale

\*\*Scheduling your property inspection is now a breeze! Simply click on the "Book an Inspection" or "Request a Time" button to secure your appointment. You'll instantly receive a confirmation and be kept up-to-date with any alterations or cancellations concerning your scheduled visit. Please be aware, inspections may be subject to cancellation if no bookings are registered. Make your booking today and take the first step in finding your ideal home\*\*

Discover this charming low-maintenance 3-bedroom townhouse at 19 Fitzrovia Dr, Wyndham Vale, perfect for families seeking comfort and convenience. Featuring three spacious bedrooms with built-in wardrobes, a modern kitchen with ample storage, open-plan living and dining, two bathrooms, and a secure garage, this home offers easy-care living in a family-friendly neighbourhood. Enjoy a low-maintenance outdoor area ideal for relaxing or entertaining, all within close proximity to schools, parks, shopping centres, and public transport.



#### Alex Deng

Leasing Specialist

0402 932 533

03 9818 8991

[alex.deng@areal.com.au](mailto:alex.deng@areal.com.au)

A/REAL



A/REAL



A/REAL



A/REAL

## INSPECTION & APPLICATION PROCESS



VIEW LISTING ONLINE



GET IN TOUCH



ATTEND AN INSPECTION



APPLY ONLINE

Click the “Register” or “Book with Inspect Real Estate” button and enter your preferred contact details so that we can keep you up to date with any changes or cancellations to your booking.

If the advertised time does not suit: click “Get in Touch” or “Email” to submit your interest in the property. You will then be kept up to date about any future inspections.

Attend an inspection with one of our Leasing Specialists.

After your inspection, you will receive a link with instructions on how to apply online via 2Apply.

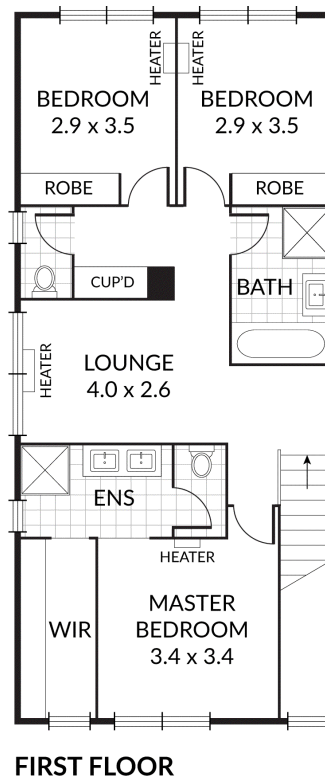
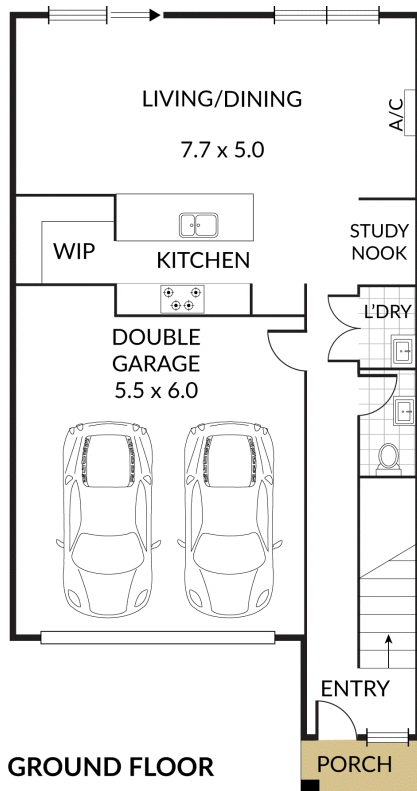
Visit [www.2apply.com.au](http://www.2apply.com.au)

Internal 178m<sup>2</sup> External 2m<sup>2</sup> Total 180m<sup>2</sup>

19 Fitzrovia Drive, **Wyndham Vale**



3 x 2 x 2 x



## BOX HILL

Suite 3.4, Level 3, 990 Whitehorse Road, Box Hill. Victoria 3128 | 8686 8388

## HAWTHORN EAST

33 Camberwell Road, Hawthorn. Victoria 3123 | 9818 8991

## MELBOURNE CBD

Level 7, 99 Queen Street, Melbourne. VIC 3000 | 9818 8991

## NORTH

Suites 4 & 5 High Street, Lalor. VIC 3075 | 03 9436 0888

## POINT COOK

Entrance C4, Level 1, 2 Main Street, Point Cook. VIC 3030 | 8686 8338

## SOUTH MORANG

29 Gorge Road, South Morang. VIC 3752 | 8804 5888

[info@areal.com.au](mailto:info@areal.com.au)