

Quietly Convenient



For Sale

1/8 Zurzolo Terrace, Epping VIC 3076

 2  1

Awaiting Price Guide

For Sale

1/8 Zurzolo Terrace, Epping VIC 3076

 2  1

Quietly Convenient

This beautifully presented home is situated close to Westfield, and conveniently located to almost anything you need. The home boasts a spacious living room with floating timber floors. The open plan kitchen and meals area flows seamlessly to glass sliding doors, leading out to a low maintenance, large courtyard. You won't get caught in the rain again, with internal access to the house through the double garage. Upstairs you will find 2 generous sized bedrooms with built in robes, and a central bathroom. With split system heating and cooling, you'll be comfortable all year round. If location is the deal breaker, this home will solve all your problems. Not far from your doorstep, in any direction, you can access multiple public transport options. With Westfield Plenty Valley only a short drive - or walk - away, you can enjoy its many eateries and shopping facilities. If you're more into outdoor activities, you can access walking trails and parks in just moments. Schools are also in abun...



Justin Sciola

Sales Director | Auctioneer - AReal Property South Morang

0423 916 416

03 8804 5888

justin.sciola@areal.com.au



 **firstnational**
REAL ESTATE
South Morang



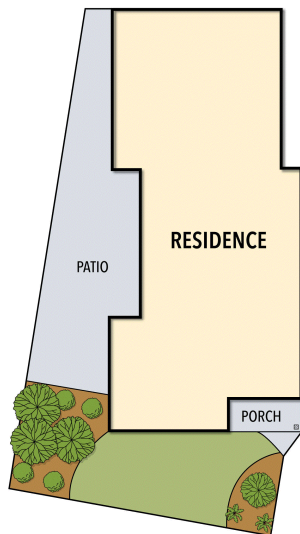
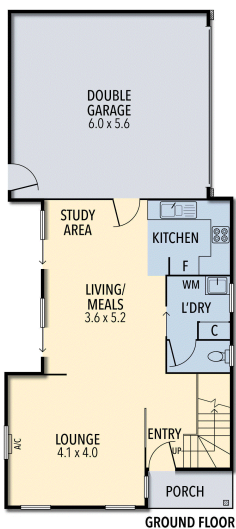
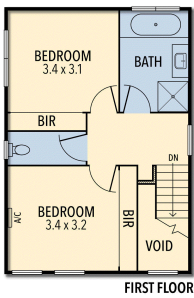
 **firstnational**
REAL ESTATE
South Morang






firstnational
 REAL ESTATE
 South Morang

1/8 ZURZOLO TERRACE, EPPING



BOX HILL

Suite 3.4, Level 3, 990 Whitehorse Road, Box Hill. Victoria 3128 | 8686 8388

HAWTHORN EAST

33 Camberwell Road, Hawthorn. Victoria 3123 | 9818 8991

MELBOURNE CBD

Level 7, 99 Queen Street, Melbourne. VIC 3000 | 9818 8991

NORTH

Suites 4 & 5 High Street, Lalor. VIC 3075 | 03 9436 0888

POINT COOK

Entrance C4, Level 1, 2 Main Street, Point Cook. VIC 3030 | 8686 8338

SOUTH MORANG

29 Gorge Road, South Morang. VIC 3752 | 8804 5888

info@areal.com.au