

Modern, single-level haven with
family appeal



For Sale

20 Pioneer Drive, Deer Park VIC 3023

 3  2

\$740,000

For Sale

20 Pioneer Drive, Deer Park VIC 3023

 3  2

Modern, single-level haven with family appeal

Desirably single-level and designed for comfortable modern living, this well-presented home delivers space, quality and excellent lifestyle appeal.

Introduced by a contemporary façade, immaculate interiors flow from a light-filled living room, to a modern kitchen/meals area featuring ample storage, stone benchtops and stainless steel appliances.

Positioned at the front of the home and capturing glorious northerly sun, you will discover a master suite offering a luxe ensuite and walk-in robe, and further accompanied by 2 robed bedrooms and stunning bathroom. Families will appreciate the added luxury of ducted heating, a generous rear garden with scope to personalise when ready and single garage.

Zoned for Deer Park West Primary, enjoy the convenience of being close to a choice of quality schools, Brimbank Shopping Centre and public transport including Deer Park train station.

Disclaimer: We have in preparing the content used our best endeavours to ensure that the information contain...



Vikas Sheoran

Sales Executive, Licensed Estate Agent

0427 150 725

03 9818 8991

vikas.sheoran@areal.com.au



Lisa Tsang

Sales Executive

0493 890 612

03 9818 8991

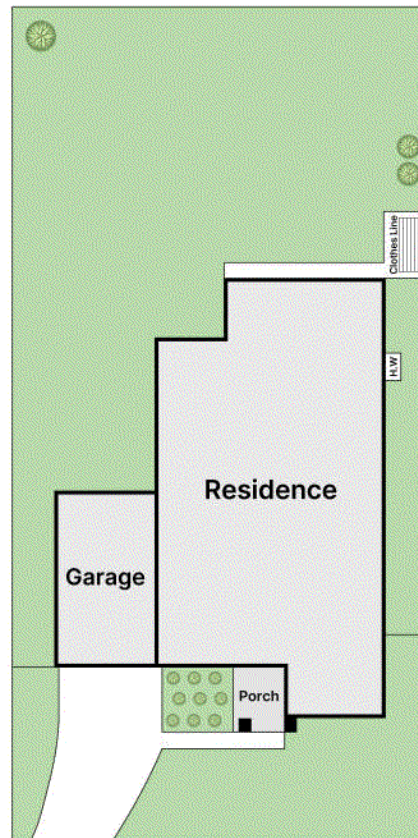
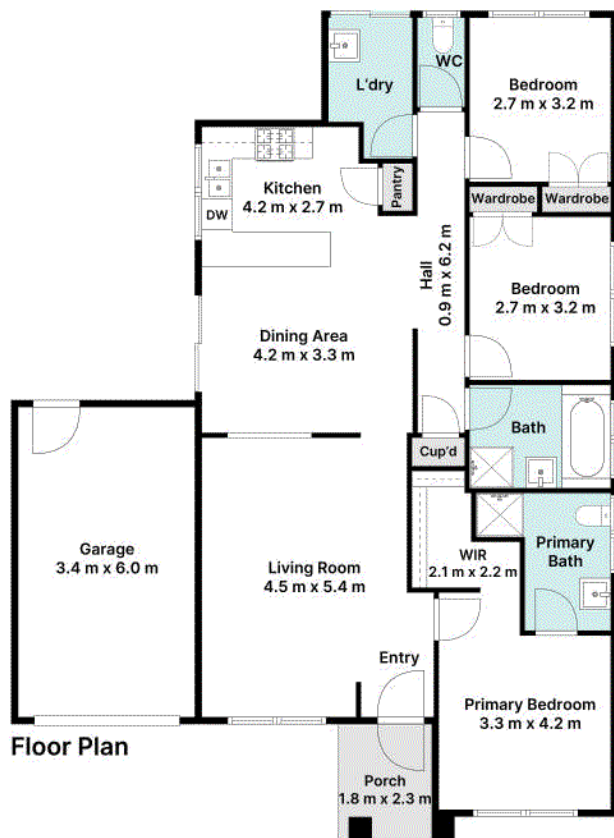
lisa.tsang@areal.com.au

A/REAL



A/REAL





BOX HILL

Suite 3.4, Level 3, 990 Whitehorse Road, Box Hill. Victoria 3128 | 8686 8388

HAWTHORN EAST

33 Camberwell Road, Hawthorn. Victoria 3123 | 9818 8991

MELBOURNE CBD

Level 7, 99 Queen Street, Melbourne. VIC 3000 | 9818 8991

NORTH

Suites 4 & 5 High Street, Lalor. VIC 3075 | 03 9436 0888

POINT COOK

Entrance C4, Level 1, 2 Main Street, Point Cook. VIC 3030 | 8686 8338

SOUTH MORANG

29 Gorge Road, South Morang. VIC 3752 | 8804 5888

info@areal.com.au