

## Capitol Grand luxury with captivating city views



For Sale

2602/1 Almeida Crescent, South Yarra VIC 3141

 2  2

\$800,000

## For Sale

2602/1 Almeida Crescent, South Yarra VIC 3141



### Capitol Grand luxury with captivating city views

Designed by the renowned Bates Smart architects, Capitol Grand sets an exclusive benchmark for contemporary urban living and presents an outstanding opportunity for first-home buyers and astute investors.

Showcasing modern sophistication and northern sun throughout, this 2 bedroom, 2 bathroom apartment's open-plan layout incorporates a state-of-the-art kitchen lavishly appointed with stone benchtops and high-end Gaggenau appliances, while a full-width balcony offers a private place to entertain and take in the stunning city views.

Residents are treated to a basement car space and storage cage, plus an exceptional array of amenities, including a 24-hour concierge, fully equipped gym, swimming pool, spa, sauna, steam and massage rooms, communal lounges, BBQ terrace, private dining and function rooms, library, cinema room and onsite car wash - delivering a lifestyle defined by convenience and indulgence.

Perfectly positioned in the vibrant heart of South Yarra, the apartment is just ...



### Andy Yuan

Senior Sales Executive, Licensed Estate Agent, Auctioneer

0406 217 388

03 8686 8388

[andy.yuan@areal.com.au](mailto:andy.yuan@areal.com.au)



### Dave Tang

Sales Executive

0432 523 853

03 8686 8388

[dave.tang@areal.com.au](mailto:dave.tang@areal.com.au)



A/REAL

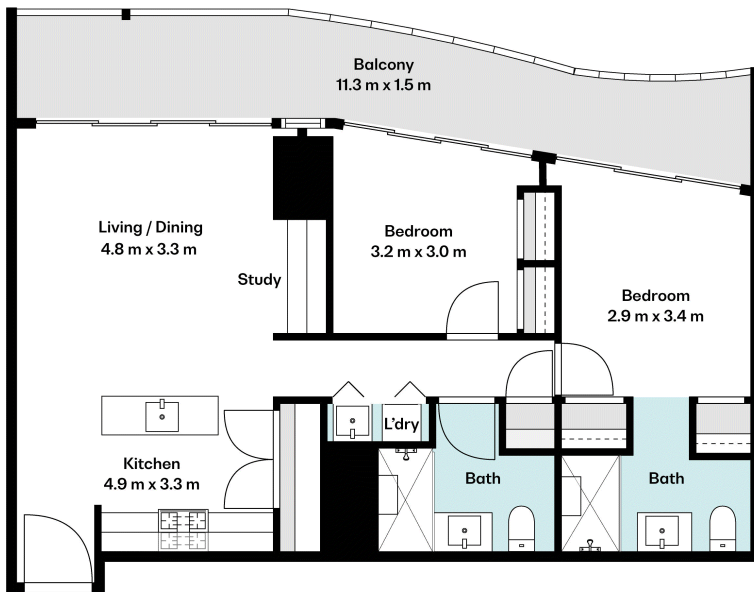


A/REAL





A/REAL



Storage

Car Space

(Not in Position)



## BOX HILL

Suite 3.4, Level 3, 990 Whitehorse Road, Box Hill. Victoria 3128 | 8686 8388

## HAWTHORN EAST

33 Camberwell Road, Hawthorn. Victoria 3123 | 9818 8991

## MELBOURNE CBD

Level 7, 99 Queen Street, Melbourne. VIC 3000 | 9818 8991

## NORTH

Suites 4 & 5 High Street, Lalor. VIC 3075 | 03 9436 0888

## POINT COOK

Entrance C4, Level 1, 2 Main Street, Point Cook. VIC 3030 | 8686 8338

## SOUTH MORANG

29 Gorge Road, South Morang. VIC 3752 | 8804 5888

[info@areal.com.au](mailto:info@areal.com.au)

[areal.com.au](http://areal.com.au)