

Modern family living at its finest



## For Sale

45 Taworri Crescent, Werribee VIC 3030

 4  2  448sqm

\$680,000

## For Sale

45 Taworri Crescent, Werribee VIC 3030

 4  2  448sqm

### Modern family living at its finest

Impeccably designed for effortless everyday living, this modern single-level home offers an inviting blend of dual-zoned space, style and family practicality.

A welcoming ambience and natural light add vibrancy to a bright living room, flowing through to a stylish kitchen/meals area flaunting stone surfaces, island bench and quality stainless steel appliances.

Privately placed at the front of the home, you will find a luxurious master suite offering a glorious northern orientation, ensuite and walk-in robe, while 3 further robed bedrooms and stunning bathroom complete interior dimensions.

Promising an easy-care lifestyle with every modern indulgence, including ducted heating, evaporative AC, covered terrace, family-friendly rear garden and double garage.

Located for the utmost convenience, close to Werribee Town Centre, Werribee train station, Wyndham Vale train station, Manor Lakes shopping centre and easy access to the freeway.

Disclaimer: We have in preparing the content used ...



#### Andy Yuan

Senior Sales Executive, Licensed Estate Agent, Auctioneer

0406 217 388

03 8686 8388

andy.yuan@areal.com.au



#### Vikas Sheoran

Sales Executive, Licensed Estate Agent

0427 150 725

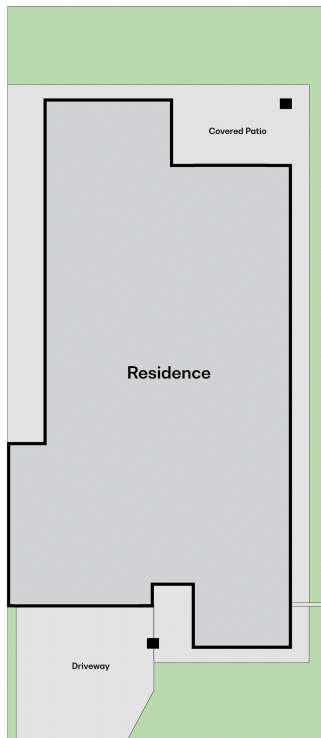
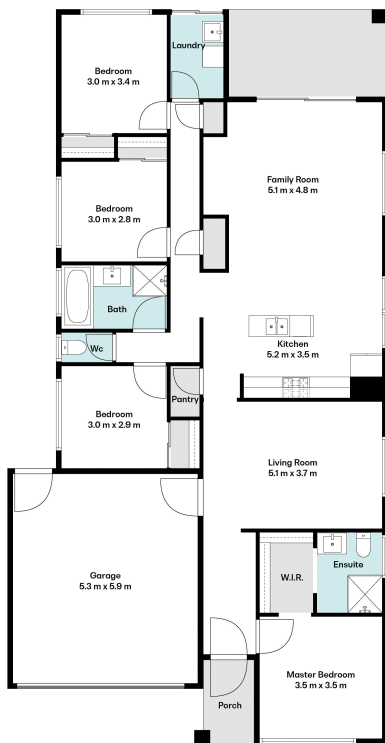
03 9818 8991

vikas.sheoran@areal.com.au

A/REAL







Land Size: 448 m<sup>2</sup>  
(approx.)





#### BOX HILL

Suite 3.4, Level 3, 990 Whitehorse Road, Box Hill. Victoria 3128 | 8686 8388

#### HAWTHORN EAST

33 Camberwell Road, Hawthorn. Victoria 3123 | 9818 8991

#### MELBOURNE CBD

Level 7, 99 Queen Street, Melbourne. VIC 3000 | 9818 8991

#### NORTH

Suites 4 & 5 High Street, Lalor. VIC 3075 | 03 9436 0888

#### POINT COOK

Entrance C4, Level 1, 2 Main Street, Point Cook. VIC 3030 | 8686 8338

#### SOUTH MORANG

29 Gorge Road, South Morang. VIC 3752 | 8804 5888

[info@areal.com.au](mailto:info@areal.com.au)

[areal.com.au](http://areal.com.au)