

**\*\*"Modern 1-Bedroom  
Apartment in Abbotsford -  
Your Ideal Urban Retreat!"\*\***



**For Lease**

605D/615 Victoria Street, Abbotsford VIC 3067

 1  1

\$550 per Week

## For Lease

605D/615 Victoria Street, Abbotsford VIC 3067



**\*\*"Modern 1-Bedroom Apartment in Abbotsford - Your Ideal Urban Retreat!"\*\***

Presenting a stunning 1-bedroom, 1-bathroom rental apartment in the vibrant neighborhood of Abbotsford. This modern and stylish unit offers a perfect blend of affordability and comfort, making it an ideal choice for individuals looking for a contemporary living space.

Upon entering the apartment, you are greeted by a clean and bright interior that exudes a sense of warmth and coziness. The living area is spacious and well-appointed, providing ample room for relaxation and entertainment. The bedroom offers a peaceful retreat, with large windows allowing natural light to flood the space.

This property boasts a range of sought-after features, though specific details are yet to be disclosed. However, rest assured that this apartment is designed to meet your needs and elevate your living experience.

Conveniently located in Abbotsford, residents will enjoy easy access to a variety of amenities, including shopping centers, restaurants, parks, and public transportation options. This is a f...



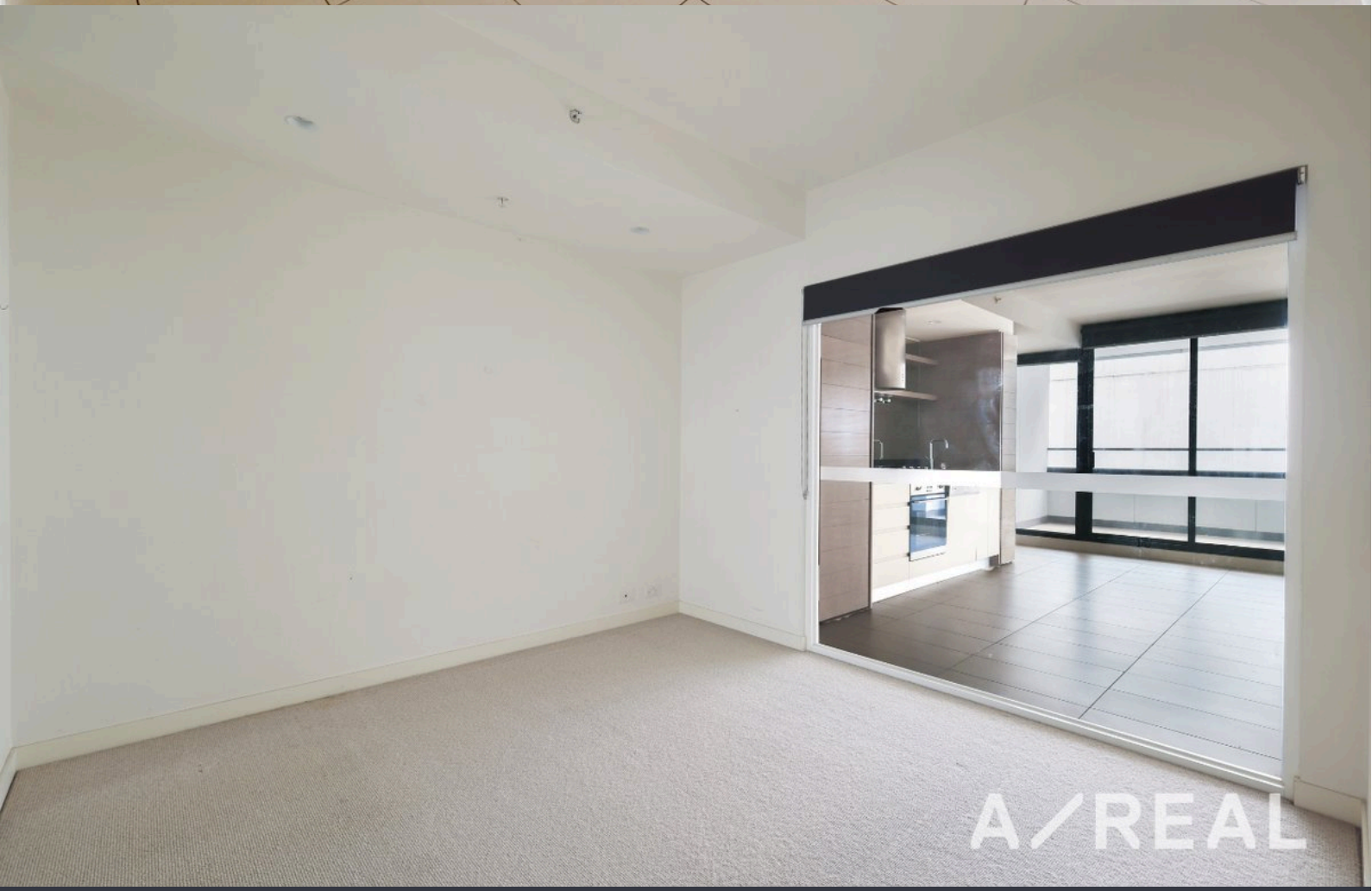
**Jessica Sha**

Business Development Manager, Licensed Estate Agent

0406 265 788

03 9818 8991

[jessica.sha@areal.com.au](mailto:jessica.sha@areal.com.au)





## INSPECTION & APPLICATION PROCESS



VIEW LISTING ONLINE



GET IN TOUCH



ATTEND AN INSPECTION



APPLY ONLINE

Click the “Register” or “Book with Inspect Real Estate” button and enter your preferred contact details so that we can keep you up to date with any changes or cancellations to your booking.

If the advertised time does not suit: click “Get in Touch” or “Email” to submit your interest in the property. You will then be kept up to date about any future inspections.

Attend an inspection with one of our Leasing Specialists.

After your inspection, you will receive a link with instructions on how to [apply online via 2Apply](#).

Visit [www.2apply.com.au](http://www.2apply.com.au)

## BOX HILL

Suite 3.4, Level 3, 990 Whitehorse Road, Box Hill. Victoria 3128 | 8686 8388

## HAWTHORN EAST

33 Camberwell Road, Hawthorn. Victoria 3123 | 9818 8991

## MELBOURNE CBD

Level 7, 99 Queen Street, Melbourne. VIC 3000 | 9818 8991

## NORTH

Suites 4 & 5 High Street, Lalor. VIC 3075 | 03 9436 0888

## POINT COOK

Entrance C4, Level 1, 2 Main Street, Point Cook. VIC 3030 | 8686 8338

## SOUTH MORANG

29 Gorge Road, South Morang. VIC 3752 | 8804 5888

[info@areal.com.au](mailto:info@areal.com.au)