

## Affordable and Modern Townhouse in Noble Park



## For Sale

3/54 Buckley Street, Noble Park VIC 3174

 2  2

\$695,000

## For Sale

3/54 Buckley Street, Noble Park VIC 3174



### Affordable and Modern Townhouse in Noble Park

Walking distance to Noble Park shopping precinct and train station, Noble Park Primary School and Secondary College dual school zone, easy access to M3 freeway, 30 mins to Melbourne CBD!

- School Zone
- 200m walk to Noble Park Primary School
- 4 mins drive to Noble Park Secondary College
- 8 mins drive to Haileybury College (Keysborough campus, Top Private School)
- Connectivity
- Route 709, 816 bus stop nearby
- 400m walk to Noble Park Station, with direct access to Melbourne CBD
- Shopping
- 300m walk to Noble Park shopping area and Coles
- 6 mins drive to Woolworths
- 8 mins drive to Parkmore Shopping Centre, IKEA, Bunnings and Officeworks
- Surrounding Parks
- Copas Park Playground nearby!
- 700m walk to Noble Park Skatepark and Noble Park Aquatic Centre
- Medical Centre
- 9 mins drive to Dandenong Hospital

Disclaimer: We have in preparing the content used our best endeavours to ensure that the information contained is true and accurate, however accept no responsibility and disc...



## Andy Yuan

Senior Sales Executive, Licensed Estate Agent, Auctioneer

0406 217 388

03 8686 8388

[andy.yuan@areal.com.au](mailto:andy.yuan@areal.com.au)



## Dave Tang

Sales Executive

0432 523 853

03 8686 8388

[dave.tang@areal.com.au](mailto:dave.tang@areal.com.au)

A/REAL



Artist impression only



Artist impression only





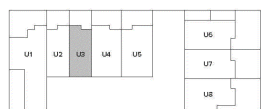
Artist impression only

## 54 BUCKLEY STREET NOBLE PARK VIC 3174

### UNIT 3

2	2	3	1

GROUND FLOOR	46 m <sup>2</sup>
FIRST FLOOR	53 m <sup>2</sup>
SECOND FLOOR	54 m <sup>2</sup>
<b>TOTAL FLOOR AREA</b>	<b>16.5 SQ / 153 m<sup>2</sup></b>
S.P.O.S	10 m <sup>2</sup>
TOTAL P.O.S	25 m <sup>2</sup>
LAND SIZE	83.77 m <sup>2</sup>
<b>TOTAL AREA</b>	<b>19.16 SQ / 178 m<sup>2</sup></b>

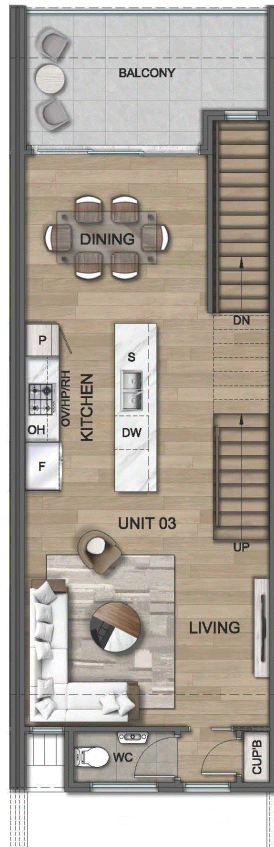


0 1 2 3 4m

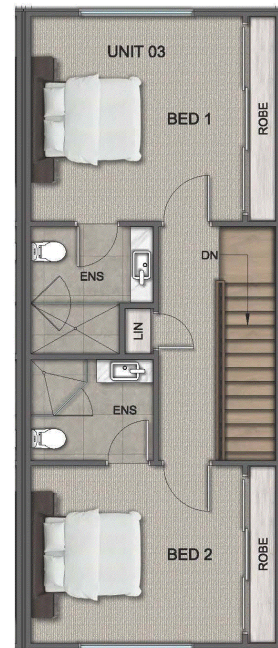
DISCLAIMER: This document has been produced by the developer for advertising and general information only. The developer and its project team do not guarantee, warranty or represent that the information contained within this document is correct. Any interested parties should undertake their own enquiries as to the accuracy of this document. The developer excludes any responsibility and implied terms, conditions and warranties arising out of this document and excludes all liability for loss and are subject to change without notice and should be verified by the purchaser on or prior to exchange. The information contained herein is believed to be current but is not guaranteed. Furniture is not included.



GROUND FLOOR



FIRST FLOOR



SECOND FLOOR

## BOX HILL

Suite 3.4, Level 3, 990 Whitehorse Road, Box Hill. Victoria 3128 | 8686 8388

## HAWTHORN EAST

33 Camberwell Road, Hawthorn. Victoria 3123 | 9818 8991

## MELBOURNE CBD

Level 7, 99 Queen Street, Melbourne. VIC 3000 | 9818 8991

## NORTH

Suites 4 & 5 High Street, Lalor. VIC 3075 | 03 9436 0888

## POINT COOK

Entrance C4, Level 1, 2 Main Street, Point Cook. VIC 3030 | 8686 8338

## SOUTH MORANG

29 Gorge Road, South Morang. VIC 3752 | 8804 5888

[info@areal.com.au](mailto:info@areal.com.au)

[areal.com.au](http://areal.com.au)