

Modern Family Comfort in a Prime Craigieburn Location



For Lease

10 Dianne Avenue, Craigieburn VIC 3064

 3  2

\$490 per Week

For Lease

10 Dianne Avenue, Craigieburn VIC 3064

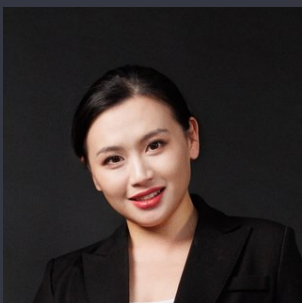
 3  2

Modern Family Comfort in a Prime Craigieburn Location

Scheduling your property inspection is now a breeze! Simply click on the "Book an Inspection" or "Request a Time" button to secure your appointment. You'll instantly receive a confirmation and be kept up-to-date with any alterations or cancellations concerning your scheduled visit. Please be aware, inspections may be subject to cancellation if no bookings are registered. Make your booking today and take the first step in finding your ideal home

Perfectly positioned in one of Craigieburn's most sought-after pockets, this beautifully presented family home offers the ideal blend of comfort, space and convenience. With shops, public transport and local parks all just moments away, this home delivers an easy, well-connected lifestyle for growing families.

Step inside to a light-filled open-plan layout featuring a well-appointed kitchen overlooking the spacious living and dining zones — the perfect setting for everyday living and relaxed family gatherings. A charming step-down lounge ...



Renata Xiang

Business Development Manager

0437 626 898

03 9116 5797

renata.xiang@areal.com.au

A/REAL



A/REAL



BOX HILL

Suite 3.4, Level 3, 990 Whitehorse Road, Box Hill. Victoria 3128 | 8686 8388

HAWTHORN EAST

33 Camberwell Road, Hawthorn. Victoria 3123 | 9818 8991

MELBOURNE CBD

Level 7, 99 Queen Street, Melbourne. VIC 3000 | 9818 8991

NORTH

Suites 4 & 5 High Street, Lalor. VIC 3075 | 03 9436 0888

POINT COOK

Entrance C4, Level 1, 2 Main Street, Point Cook. VIC 3030 | 8686 8338

SOUTH MORANG

29 Gorge Road, South Morang. VIC 3752 | 8804 5888

info@areal.com.au