

Grand-scale luxury with  
contemporary finesse



## For Sale

17 Brilliant Street, Roxburgh Park VIC 3064

 5  3  392sqm

\$880,000

## For Sale

17 Brilliant Street, Roxburgh Park VIC 3064

 5  3  392sqm

### Grand-scale luxury with contemporary finesse

A spectacular triumph in family excellence, this luxurious residence exudes contemporary style, multiple living zones and is filled with northern light.

A modern colour scheme, premium finishes and timber floors add prestige to inviting interiors, with a family room leading to a vast open-plan living/dining area, including a high-end kitchen flaunting quality appliances, island bench, stone surfaces and walk-in pantry.

Lifestyle flexibility is assured by the advantage of ground and upper-level master suites, each offering a striking twin-vanity ensuite and walk-in robe, complemented by 3 further robed bedrooms and deluxe bathroom.

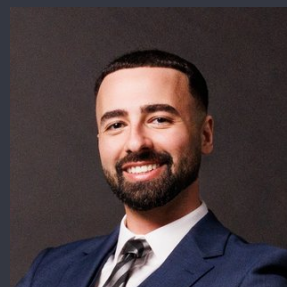
Finished to elite standards with every lifestyle indulgence including heating/AC, teenage retreat, powder room, ample storage and double garage. Perfect for large and growing families, nestled in the heart of Roxburgh Park, between Roxburgh Homestead Primary and Roxburgh Rise Primary, closes to Roxburgh College, parklands, transport and shopping precincts...



### Andy Yuan

Senior Sales Executive, Licensed Estate Agent, Auctioneer

0406 217 388  
03 8686 8388  
andy.yuan@areal.com.au



### Sani Yako

Sales Executive

0404 298 767  
03 8804 5888  
sani.yako@areal.com.au

A/REAL



A/REAL



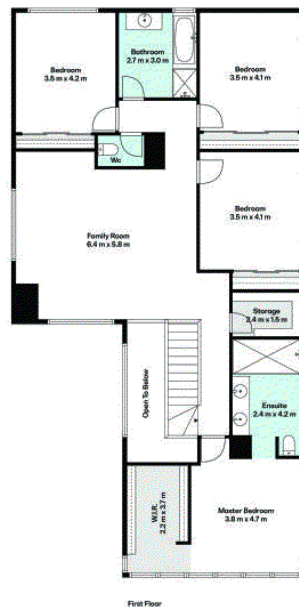
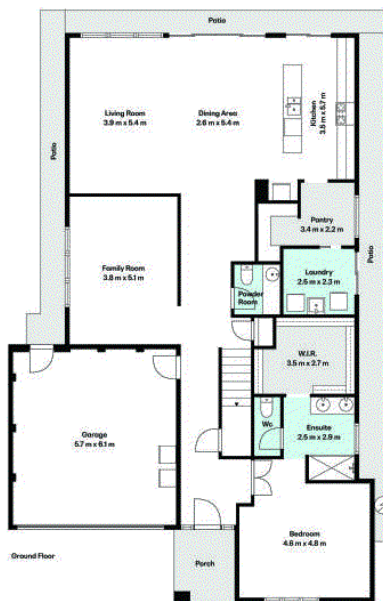
A/REAL



A/REAL



Land Size: 392 m<sup>2</sup>  
(approx)



## BOX HILL

Suite 3.4, Level 3, 990 Whitehorse Road, Box Hill. Victoria 3128 | 8686 8388

## HAWTHORN EAST

33 Camberwell Road, Hawthorn. Victoria 3123 | 9818 8991

## MELBOURNE CBD

Level 7, 99 Queen Street, Melbourne. VIC 3000 | 9818 8991

## NORTH

Suites 4 & 5 High Street, Lalor. VIC 3075 | 03 9436 0888

## POINT COOK

Entrance C4, Level 1, 2 Main Street, Point Cook. VIC 3030 | 8686 8338

## SOUTH MORANG

29 Gorge Road, South Morang. VIC 3752 | 8804 5888

[info@areal.com.au](mailto:info@areal.com.au)

[areal.com.au](http://areal.com.au)