

Spacious Family Living in a Prime Campbellfield Location



For Sale

152 Somerset Road, Campbellfield VIC 3061

 4  2  739sqm

\$800,000

For Sale

152 Somerset Road, Campbellfield VIC 3061

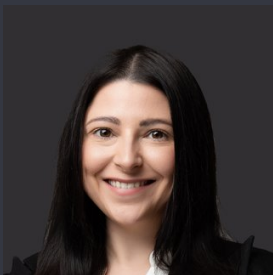
 4  2  739sqm

Spacious Family Living in a Prime Campbellfield Location

Welcome to 152 Somerset Road, Campbellfield – a beautifully presented family home offering comfort, convenience, and plenty of space for modern living. Perfectly positioned on a generous 739m² (approx.) allotment, this property combines functionality with flexibility, making it ideal for growing families or savvy investors.

Step inside to discover a well-designed floor plan featuring four spacious bedrooms, including a master with a private ensuite and built-in robe. The home offers a choice of inviting living areas – a welcoming lounge at the front and an expansive open-plan kitchen, meals, and living zone at the heart of the home. The contemporary kitchen comes complete with ample bench space, oven, and plenty of storage, making family meal times a breeze.

Enjoy the seamless indoor-outdoor connection with a covered terrace perfect for entertaining, overlooking the rear yard. Additional highlights include a modern bathroom, separate laundry, and balcony at the front entry for morni...



Stacey Gaff

Associate Director | Commercial

0421 960 468

8686 8388

stacey.gaff@areal.com.au



Justin Sciola

Sales Director | Auctioneer - AReal Property South Morang

0423 916 416

03 8804 5888

justin.sciola@areal.com.au

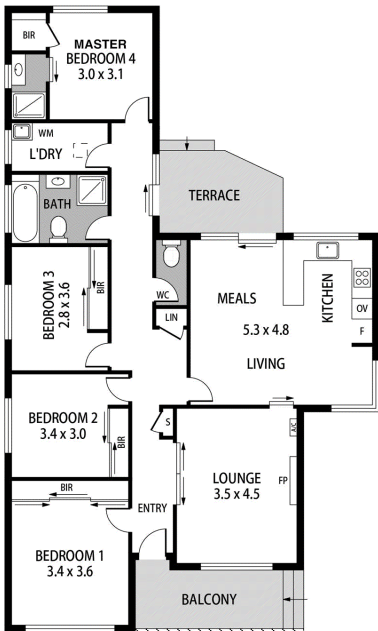


A/REAL

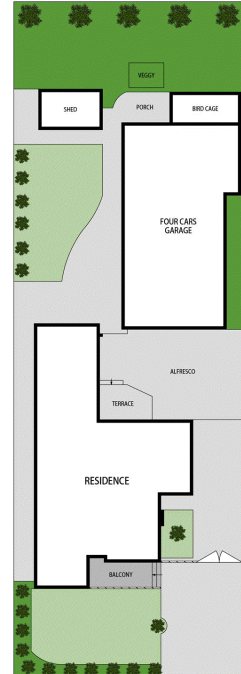
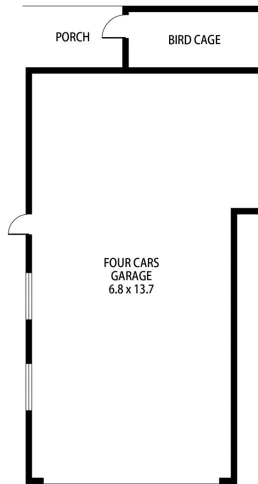
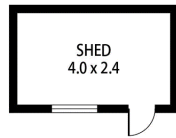




A/REAL



//FLOOR PLAN



//SITE PLAN



4 Bed



2 Bath



4 Car



739 m²

Please note: This floor plan has been produced for marketing purposes and should be used as a guide only. All measurements are approximate and any person using this information should rely on their own enquiries.

Produced by MAISONSNAP.COM.AU

BOX HILL

Suite 3.4, Level 3, 990 Whitehorse Road, Box Hill. Victoria 3128 | 8686 8388

HAWTHORN EAST

33 Camberwell Road, Hawthorn. Victoria 3123 | 9818 8991

MELBOURNE CBD

Level 7, 99 Queen Street, Melbourne. VIC 3000 | 9818 8991

NORTH

Suites 4 & 5 High Street, Lalor. VIC 3075 | 03 9436 0888

POINT COOK

Entrance C4, Level 1, 2 Main Street, Point Cook. VIC 3030 | 8686 8338

SOUTH MORANG

29 Gorge Road, South Morang. VIC 3752 | 8804 5888

info@areal.com.au

areal.com.au