

Family classic with endless potential and 22.8m frontage



For Sale

48 Cheviot Avenue, Berwick VIC 3806

 3  2  654sqm

Contact Agent

For Sale

48 Cheviot Avenue, Berwick VIC 3806

 3  2  654sqm

Family classic with endless potential and 22.8m frontage

Presenting in immaculate condition throughout, this classic family home rests on a significant allotment measuring 654sqm (approx), with vast 22.8m frontage.

Inviting 3 bedroom, 2 bathroom interiors reveal a bright living room, tidy kitchen/meals area with walk-in pantry, home office, covered entertaining patio, split system heating/AC, shed and double carport.

Move in and enjoy or lease out and collect an attractive rental income, whilst considering future options. Utilise this magnificent block to either build your forever home, or redevelop with side-by-side townhouses (STCA) – whichever option is adopted, a rewarding outcome is guaranteed.

Idyllically located, walking distance to Brentwood Park Primary School, Kambrya College, Brentwood Park Medical Centre, local shops, cafes and moments to Westfield Fountain Gate.

Disclaimer: We have in preparing the content used our best endeavours to ensure that the information contained is true and accurate, however accept no responsibility...



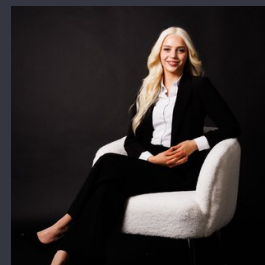
Andy Yuan

Senior Sales Executive, Licensed Estate Agent, Auctioneer

0406 217 388

03 8686 8388

andy.yuan@areal.com.au



Sophia Christopoulos

Sales Assistant to Team Andy and Dave

0406 415 988

03 8686 8388

sophia.christopoulos@areal.com.au

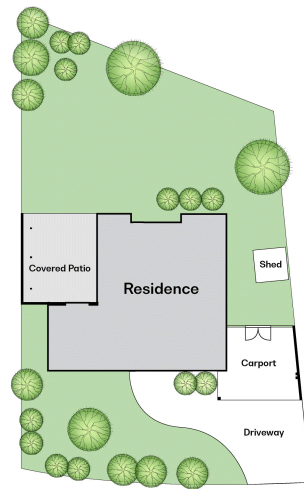


A/REAL





A/REAL



BOX HILL

Suite 3.4, Level 3, 990 Whitehorse Road, Box Hill. Victoria 3128 | 8686 8388

HAWTHORN EAST

33 Camberwell Road, Hawthorn. Victoria 3123 | 9818 8991

MELBOURNE CBD

Level 7, 99 Queen Street, Melbourne. VIC 3000 | 9818 8991

NORTH

Suites 4 & 5 High Street, Lalor. VIC 3075 | 03 9436 0888

POINT COOK

Entrance C4, Level 1, 2 Main Street, Point Cook. VIC 3030 | 8686 8338

SOUTH MORANG

29 Gorge Road, South Morang. VIC 3752 | 8804 5888

info@areal.com.au

areal.com.au