

Modern style, luxury & single-level family space



## For Sale

15 Postema Drive, Point Cook VIC 3030



4



2



356sqm

\$750,000

## For Sale

15 Postema Drive, Point Cook VIC 3030



4



2



356sqm

### Modern style, luxury & single-level family space

A vision of family class, this impressive residence delivers a lifestyle of unrivalled comfort, space and style, over an effortless single-level layout.

An air of elegance defined by a neutral colour scheme and welcoming ambience, filters through its light-filled interiors, with free-flowing living/dining enhanced by a northerly aspect, and complemented by a modern well-appointed kitchen and covered entertaining alfresco.

The main bedroom is luxuriously fitted with an ensuite/WIR, while 3 further bedrooms share a contemporary bathroom. Completing the ultimate lifestyle package, families will appreciate the addition of ducted heating, evaporative AC, L-shape rear garden and internally accessed double garage.

Tucked away in the Catalina Estate, located within the highly sought-after Saltwater P-9 College and Homestead Senior Secondary School zones, moments to Tribeca Village, Sanctuary Lakes Shopping Centre, Saltwater Reserve and Point Cook Coastal Park. Enjoy direct public transport...



### Dave Tang

Sales Executive

0432 523 853

03 8686 8388

dave.tang@areal.com.au



### Jay Wang

Sales Executive

0493 891 712

03 9818 8991

jay.wang@areal.com.au

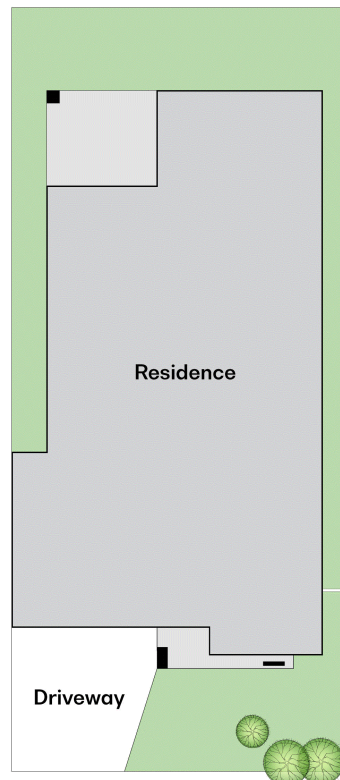
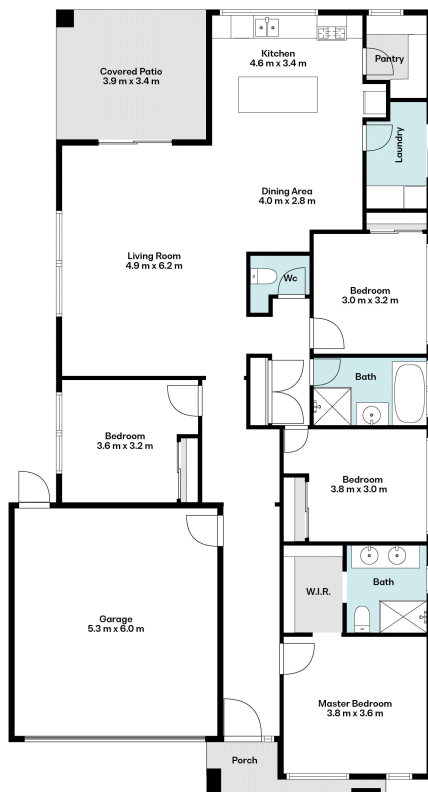
A/REAL







Land Size: 356m<sup>2</sup>  
(approx.)



## BOX HILL

Suite 3.4, Level 3, 990 Whitehorse Road, Box Hill. Victoria 3128 | 8686 8388

## HAWTHORN EAST

33 Camberwell Road, Hawthorn. Victoria 3123 | 9818 8991

## MELBOURNE CBD

Level 7, 99 Queen Street, Melbourne. VIC 3000 | 9818 8991

## NORTH

Suites 4 & 5 High Street, Lalor. VIC 3075 | 03 9436 0888

## POINT COOK

Entrance C4, Level 1, 2 Main Street, Point Cook. VIC 3030 | 8686 8338

## SOUTH MORANG

29 Gorge Road, South Morang. VIC 3752 | 8804 5888

[info@areal.com.au](mailto:info@areal.com.au)