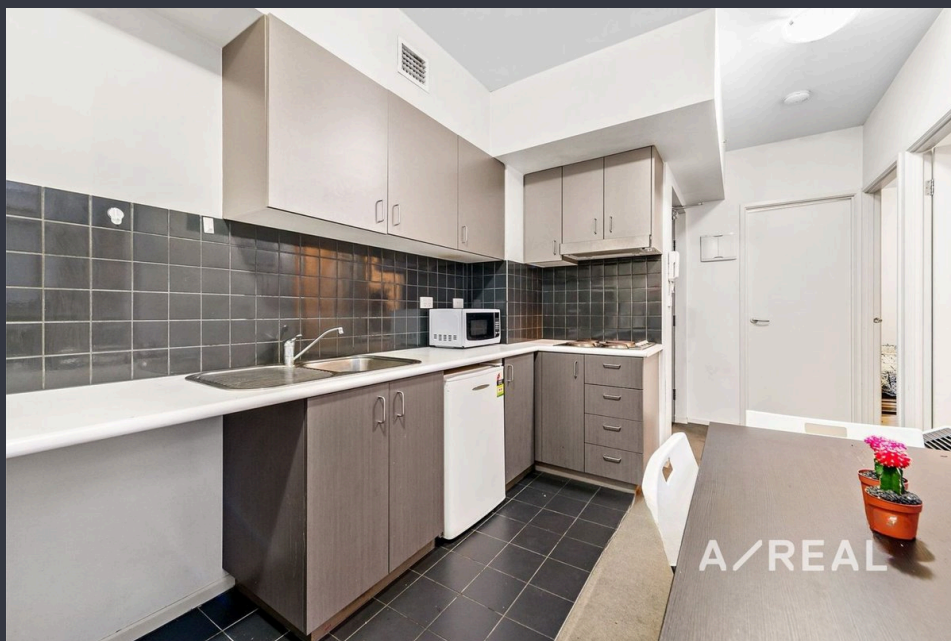


2-Bedroom Apartment in Prime Melbourne CBD Location



For Lease

2215/39 Lonsdale St Melbourne VIC 3000

 2  1

\$450 per Week

For Lease

2215/39 Lonsdale St Melbourne VIC 3000

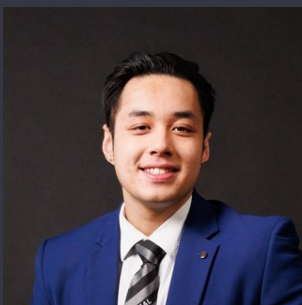


2-Bedroom Apartment in Prime Melbourne CBD Location

Scheduling your property inspection is now a breeze! Simply click on the "Book an Inspection" or "Request a Time" button to secure your appointment. You'll instantly receive a confirmation and be kept up-to-date with any alterations or cancellations concerning your scheduled visit. Please be aware, inspections may be subject to cancellation if no bookings are registered. Make your booking today and take the first step in finding your ideal home

Perfectly positioned in the heart of Melbourne's CBD, this well-presented two-bedroom apartment offers the ultimate in convenience and low-maintenance living. Featuring an open-plan living and dining area filled with natural light, a functional kitchen with electric cooktop and ample storage, and a generously sized bedroom with built-in robe, the apartment is designed to make city living comfortable and practical. The central bathroom is modern and tidy, completing the efficient layout of this inner-city home.

Residents will appreciate th...



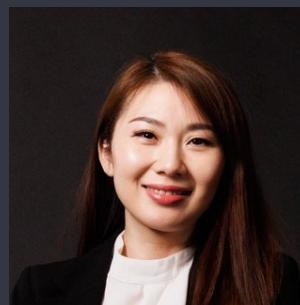
Alex Do

Leasing Specialist

0433 855 306

03 9818 8991

alex.do@areal.com.au

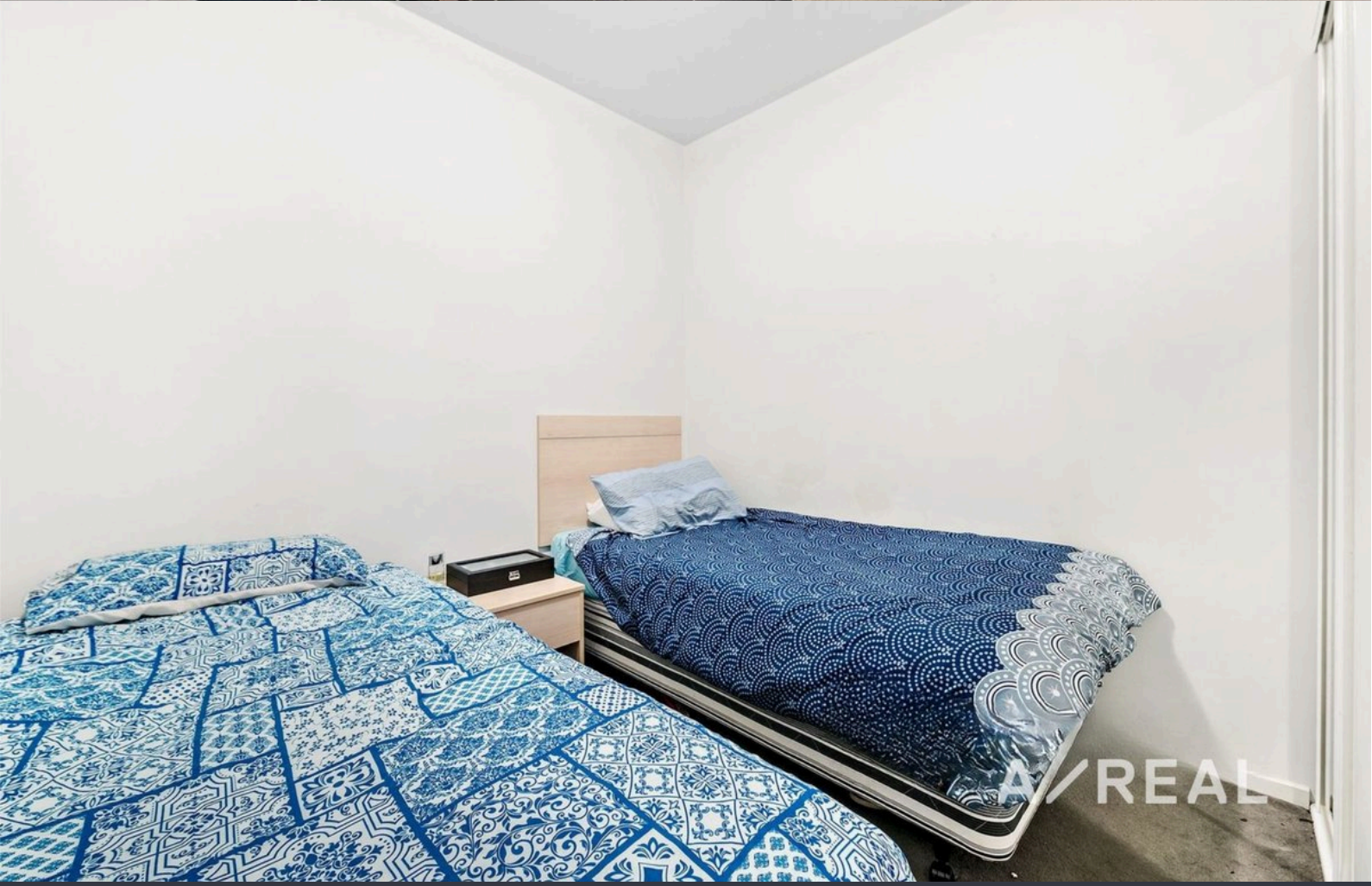


Sallie You

Relationship Manager

03 8686 8388

sallie.you@areal.com.au





BOX HILL

Suite 3.4, Level 3, 990 Whitehorse Road, Box Hill. Victoria 3128 | 8686 8388

HAWTHORN EAST

33 Camberwell Road, Hawthorn. Victoria 3123 | 9818 8991

MELBOURNE CBD

Level 7, 99 Queen Street, Melbourne. VIC 3000 | 9818 8991

NORTH

Suites 4 & 5 High Street, Lalor. VIC 3075 | 03 9436 0888

POINT COOK

Entrance C4, Level 1, 2 Main Street, Point Cook. VIC 3030 | 8686 8338

SOUTH MORANG

29 Gorge Road, South Morang. VIC 3752 | 8804 5888

info@areal.com.au