

OWNER MUST SELL



For Sale

85 Bellavita Avenue, Clyde VIC 3978

 4  2  446sqm

Contact Agent

## For Sale

85 Bellavita Avenue, Clyde VIC 3978

 4  2  446sqm

### OWNER MUST SELL

A spacious and well designed home on a good size corner allotment with plenty of room for a playground and a large dog.

Discover the perfect balance of contemporary style and family functionality in this modern single-level residence. Designed for effortless living, its quality construction is complemented by abundant natural light, warm neutral tones and a welcoming ambience that flows throughout.

At the heart of the home, the north-facing open-plan living and dining area seamlessly connects to a sleek kitchen, superbly appointed with stainless steel appliances, stone surfaces and breakfast bar - an ideal setting for both everyday meals and relaxed entertaining.

Comfort and practicality are elevated by three robed bedrooms, each fitted with built-in robes, including a luxurious main suite with walk-in robe and ensuite, while ducted heating, split system AC, blank canvas rear garden and double garage ensure family needs are met with ease.

Conveniently located opposite within mome...



**Lisa Tsang**

Sales Executive

0493 890 612

03 9818 8991

[lisa.tsang@areal.com.au](mailto:lisa.tsang@areal.com.au)



**Warren Tate**

Head of Sales, Licensed Estate Agent, Auctioneer

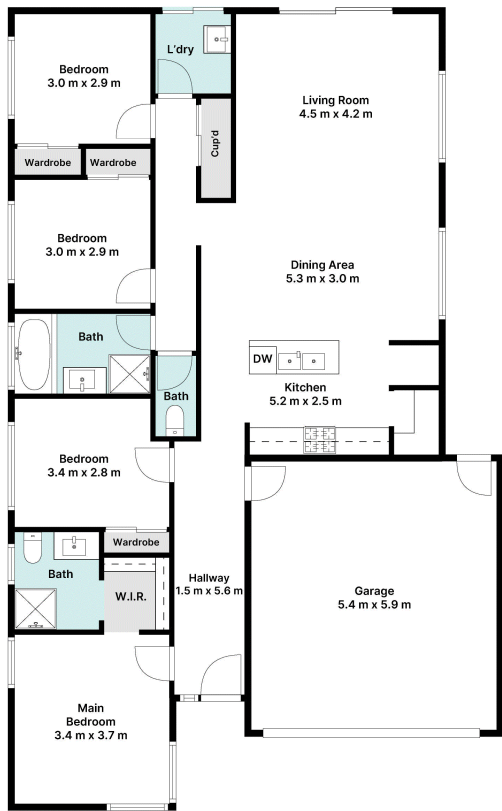
0412 328 072

03 9818 8991

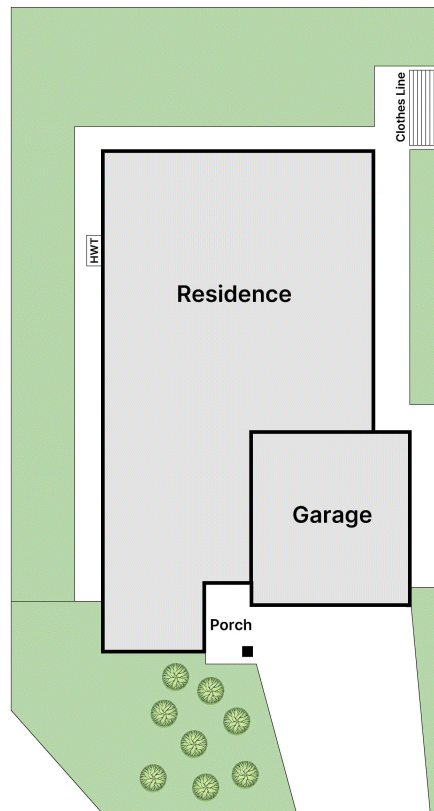
[warren.tate@areal.com.au](mailto:warren.tate@areal.com.au)







Floorplan



Site Plan



## BOX HILL

Suite 3.4, Level 3, 990 Whitehorse Road, Box Hill. Victoria 3128 | 8686 8388

## HAWTHORN EAST

33 Camberwell Road, Hawthorn. Victoria 3123 | 9818 8991

## MELBOURNE CBD

Level 7, 99 Queen Street, Melbourne. VIC 3000 | 9818 8991

## NORTH

Suites 4 & 5 High Street, Lalor. VIC 3075 | 03 9436 0888

## POINT COOK

Entrance C4, Level 1, 2 Main Street, Point Cook. VIC 3030 | 8686 8338

## SOUTH MORANG

29 Gorge Road, South Morang. VIC 3752 | 8804 5888

[info@areal.com.au](mailto:info@areal.com.au)