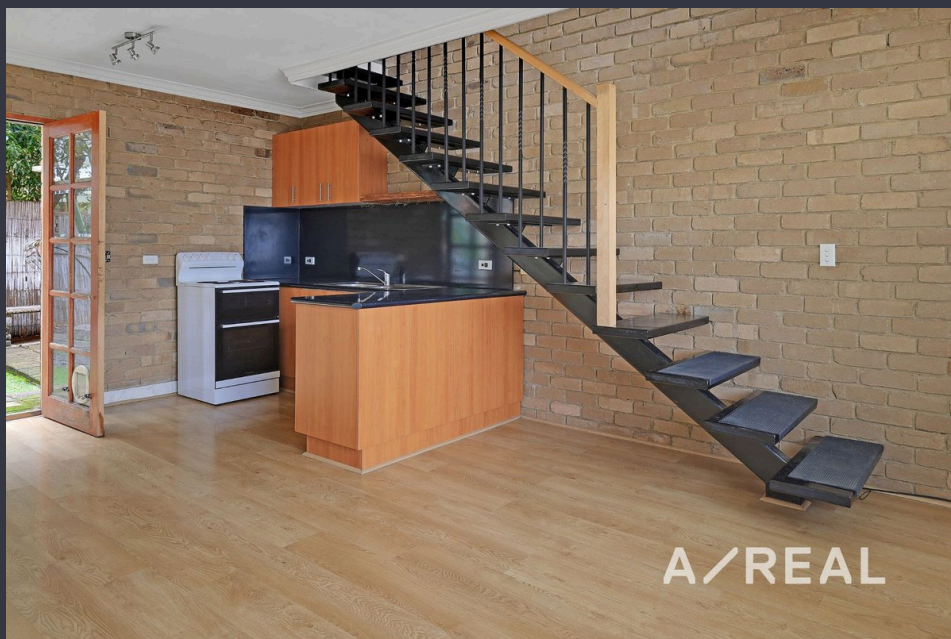


## Double Storey Living with Private Courtyard



## For Lease

7/32 Ashted Road, Box Hill VIC 3128



\$450 per Week

## For Lease

7/32 Ashted Road, Box Hill VIC 3128



### Double Storey Living with Private Courtyard

\*\*Scheduling your property inspection is now a breeze! Simply click on the "Book an Inspection" or "Request a Time" button to secure your appointment. You'll instantly receive a confirmation and be kept up-to-date with any alterations or cancellations concerning your scheduled visit. Please be aware, inspections may be subject to cancellation if no bookings are registered. Make your booking today and take the first step in finding your ideal home\*\*

Discover a homely and exclusive double storey residence tucked away in one of Box Hill's most convenient pockets. This inviting double-storey unit combines light-filled interiors with a touch of character, making it the perfect retreat to call home.

Step inside to a warm open-plan living and dining zone, complemented by timber floors and a modernised kitchen designed for easy everyday living. The oversized bedroom upstairs, complete with walk-in robes, creates a private sanctuary with an airy, elevated feel. A full-sized bathroom with lau...



### Jason Low

Director, Licensed Estate Agent

0468 958 332

03 9818 8991

[jason.low@areal.com.au](mailto:jason.low@areal.com.au)

A/REAL



A/REAL



## BOX HILL

Suite 3.4, Level 3, 990 Whitehorse Road, Box Hill. Victoria 3128 | 8686 8388

## HAWTHORN EAST

33 Camberwell Road, Hawthorn. Victoria 3123 | 9818 8991

## MELBOURNE CBD

Level 7, 99 Queen Street, Melbourne. VIC 3000 | 9818 8991

## NORTH

Suites 4 & 5 High Street, Lalor. VIC 3075 | 03 9436 0888

## POINT COOK

Entrance C4, Level 1, 2 Main Street, Point Cook. VIC 3030 | 8686 8338

## SOUTH MORANG

29 Gorge Road, South Morang. VIC 3752 | 8804 5888

[info@areal.com.au](mailto:info@areal.com.au)