

Bush outlook, you will think you  
are in the country.



## For Sale

5/2 Donald Avenue, Essendon VIC 3040

 3  2  148sqm

\$880,000

## For Sale

5/2 Donald Avenue, Essendon VIC 3040

 3  2  148sqm

*Bush outlook, you will think you are in the country.*

Offer closing 28th Oct st 6:00 pm

When you move into your fabulous near new townhouse, you will fall in love with how quiet it is and enjoy exploring the Moonee Ponds Creek trail while enjoying your favourite coffee from Mr Walker.

Tucked away in a private setting fronting Moonee Ponds Creek, this stylish townhouse is luxuriously appointed and completely stress-free, appealing to those on a quest for effortless, low-maintenance living.

Finished with timber floors and modern tones, the open-plan layout is served by a sleek, well-equipped kitchen boasting stone surfaces and ample storage, before flowing outdoors to an entertaining alfresco.

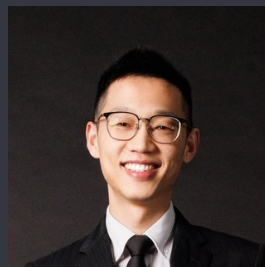
On the upper-level, you will discover 3 robed bedrooms, each fitted with BIRs (main with ensuite), while reverse-cycle heating/AC, powder room and single garage provide comfort, convenience and exceptional lifestyle allure. Situated just moments from Montgomery Park, it's also close to local cafes and public transport, with easy access to shopping...



**Lisa Tsang**

Sales Executive

0493 890 612  
03 9818 8991  
lisa.tsang@areal.com.au



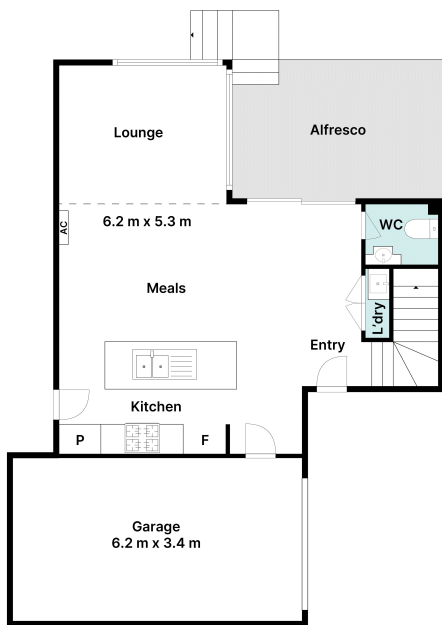
**Eddie Zhu**

Managing Director - AReal Property Melbourne, Licensed Estate Agent

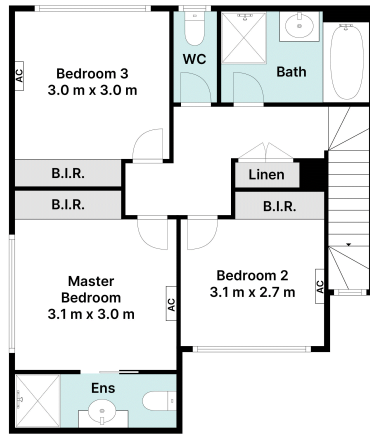
0452 585 423  
03 9818 8991  
eddie.zhu@areal.com.au



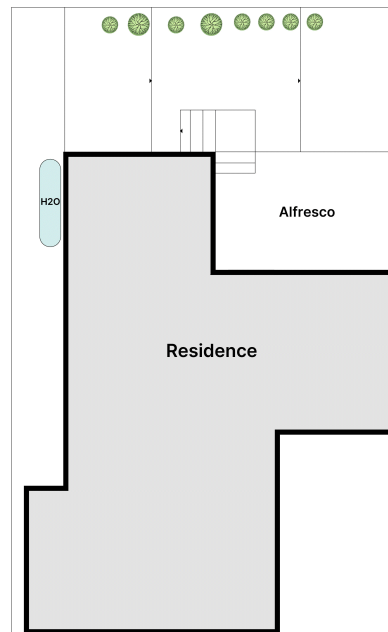




Ground Floor



First Floor



Site Plan





#### BOX HILL

Suite 3.4, Level 3, 990 Whitehorse Road, Box Hill. Victoria 3128 | 8686 8388

#### HAWTHORN EAST

33 Camberwell Road, Hawthorn. Victoria 3123 | 9818 8991

#### MELBOURNE CBD

Level 7, 99 Queen Street, Melbourne. VIC 3000 | 9818 8991

#### NORTH

Suites 4 & 5 High Street, Lalor. VIC 3075 | 03 9436 0888

#### POINT COOK

Entrance C4, Level 1, 2 Main Street, Point Cook. VIC 3030 | 8686 8338

#### SOUTH MORANG

29 Gorge Road, South Morang. VIC 3752 | 8804 5888

[info@areal.com.au](mailto:info@areal.com.au)

[areal.com.au](http://areal.com.au)