

## Move in Ready in University Hill



## For Sale

12 Surrey Court, Bundoora VIC 3083

 3  3

ESR \$719,000 - \$769,000

## For Sale

12 Surrey Court, Bundoora VIC 3083



### Move in Ready in University Hill

Sale by Closing Date - Tuesday 28th October at 6pm, (Unless Sold Prior)

Move-in ready and perfectly positioned in the heart of University Hill Estate, this quality home offers an exceptional lifestyle just moments from everything you need. Located only meters from major shopping centres, popular cafes and restaurants, RMIT University, parklands, public transport, and freeway access, the convenience is unbeatable.

Boasting three generously sized bedrooms and three modern bathrooms, this well-maintained home features a fully equipped kitchen with stone benchtops, quality fixtures and fittings, gas appliances, and a dishwasher, flowing into a light-filled family meals area. High ceilings, multiple living zones, floorboards downstairs, and downlights throughout create a spacious and modern feel, while ducted heating and evaporative cooling ensure year-round comfort.

The property also includes a large outdoor entertaining area and a secure double carport, making it ideal for families or...



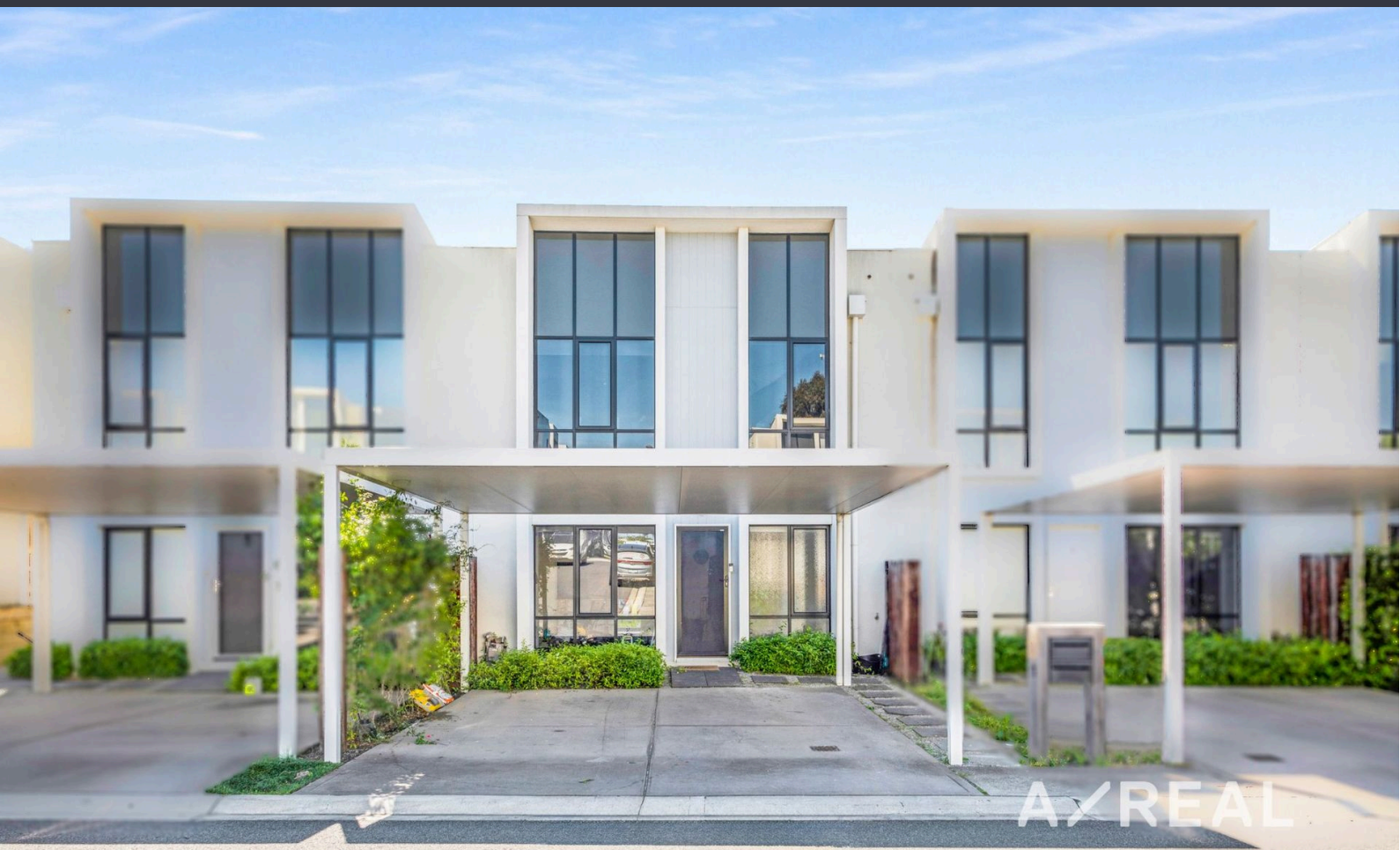
#### Justin Sciola

Sales Director | Auctioneer - AReal  
Property South Morang

0423 916 416  
03 8804 5888  
[justin.sciola@areal.com.au](mailto:justin.sciola@areal.com.au)



A/REAL





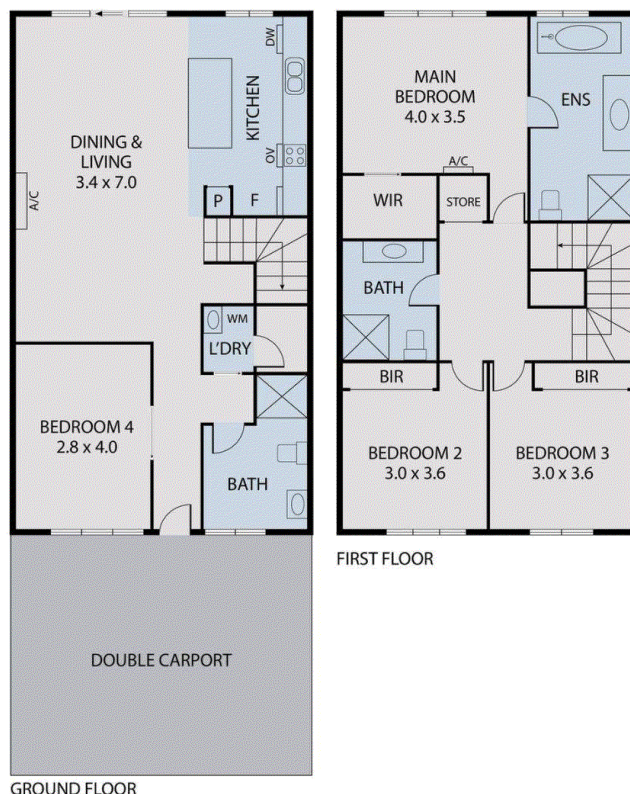
A/REAL







## 12 Surrey Court, Bundoora



GROUND FLOOR

A/REAL

Please note this is a representation and whilst every precaution is taken to ensure we provide you with accurate information regarding this property, we recommend you obtain your own measurements and/or engage the services of a qualified surveyor should you require exact dimensions. We expressly deny any responsibility for any omissions contained herein.



## BOX HILL

Suite 3.4, Level 3, 990 Whitehorse Road, Box Hill. Victoria 3128 | 8686 8388

## HAWTHORN EAST

33 Camberwell Road, Hawthorn. Victoria 3123 | 9818 8991

## MELBOURNE CBD

Level 7, 99 Queen Street, Melbourne. VIC 3000 | 9818 8991

## POINT COOK

Entrance C4, Level 1, 2 Main Street, Point Cook. VIC 3030 | 8686 8338

## SOUTH MORANG

29 Gorge Road, South Morang. VIC 3752 | 8804 5888

[info@areal.com.au](mailto:info@areal.com.au)