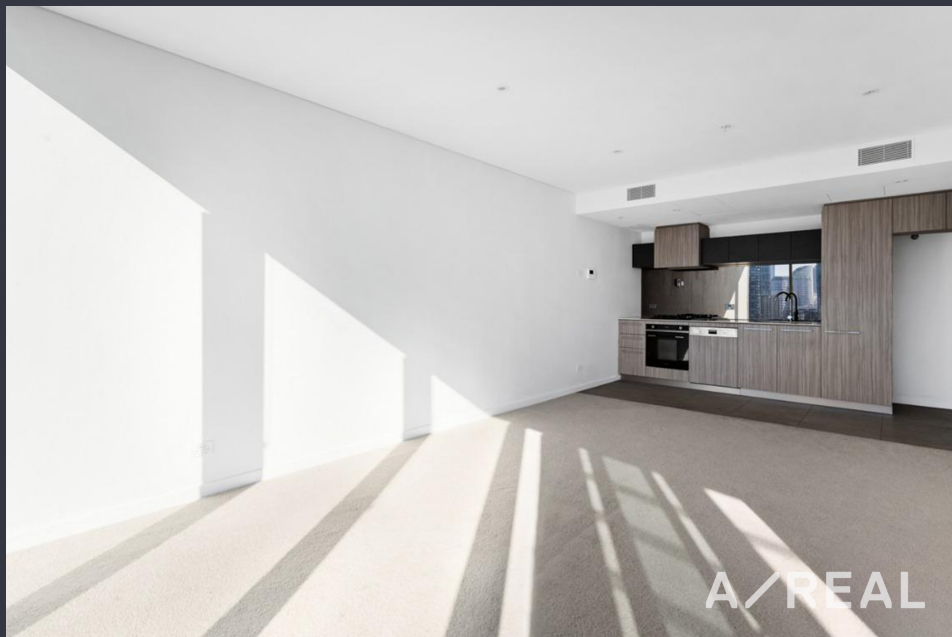


A Luxurious Living on the City's Edge



For Lease

1505/81 South Wharf Drive, Docklands VIC 3008

 2  2

\$800 per Week

For Lease

1505/81 South Wharf Drive, Docklands VIC 3008



A Luxurious Living on the City's Edge

Scheduling your property inspection is now a breeze! Simply click on the "Book an Inspection" or "Request a Time" button to secure your appointment. You'll instantly receive a confirmation and be kept up-to-date with any alterations or cancellations concerning your scheduled visit. Please be aware, inspections may be subject to cancellation if no bookings are registered. Make your booking today and take the first step in finding your ideal home

Placed high on the 15th floor of the Forge Apartments complex, this resplendent, spacious, and utterly modern two bedroom two bathroom Dockland's apartment promises dazzling views of the Yarra River and city skyline.

This executive style apartment offers spacious open-plan living and dining with a modern kitchen equipped with stainless steel appliances, opening out to the central balcony with unbeatable city and docklands views. Relax in the master bedroom with built-in robes and floor-to-ceiling windows plus ensuite, and a second bedro...

A/REAL



A/REAL



BOX HILL

Suite 3.4, Level 3, 990 Whitehorse Road, Box Hill. Victoria 3128 | 8686 8388

HAWTHORN EAST

33 Camberwell Road, Hawthorn. Victoria 3123 | 9818 8991

MELBOURNE CBD

Level 7, 99 Queen Street, Melbourne. VIC 3000 | 9818 8991

POINT COOK

Entrance C4, Level 1, 2 Main Street, Point Cook. VIC 3030 | 8686 8338

SOUTH MORANG

29 Gorge Road, South Morang. VIC 3752 | 8804 5888

info@areal.com.au

areal.com.au