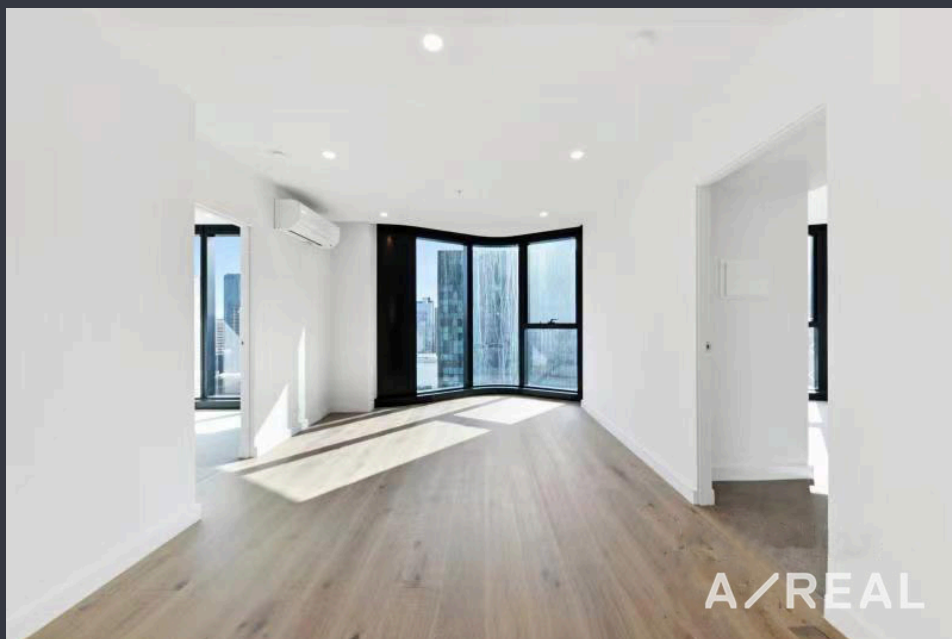


380 Melbourne lets you live life
to the full, without leaving the
building



For Lease

3411/371 Little Lonsdale St Melbourne VIC 3000

 2  2

\$810 per Week

For Lease

3411/371 Little Lonsdale St Melbourne VIC 3000



380 Melbourne lets you live life to the full, without leaving the building

****ARRANGE AN INSPECTION TIME ONLINE - DETAILS BELOW****

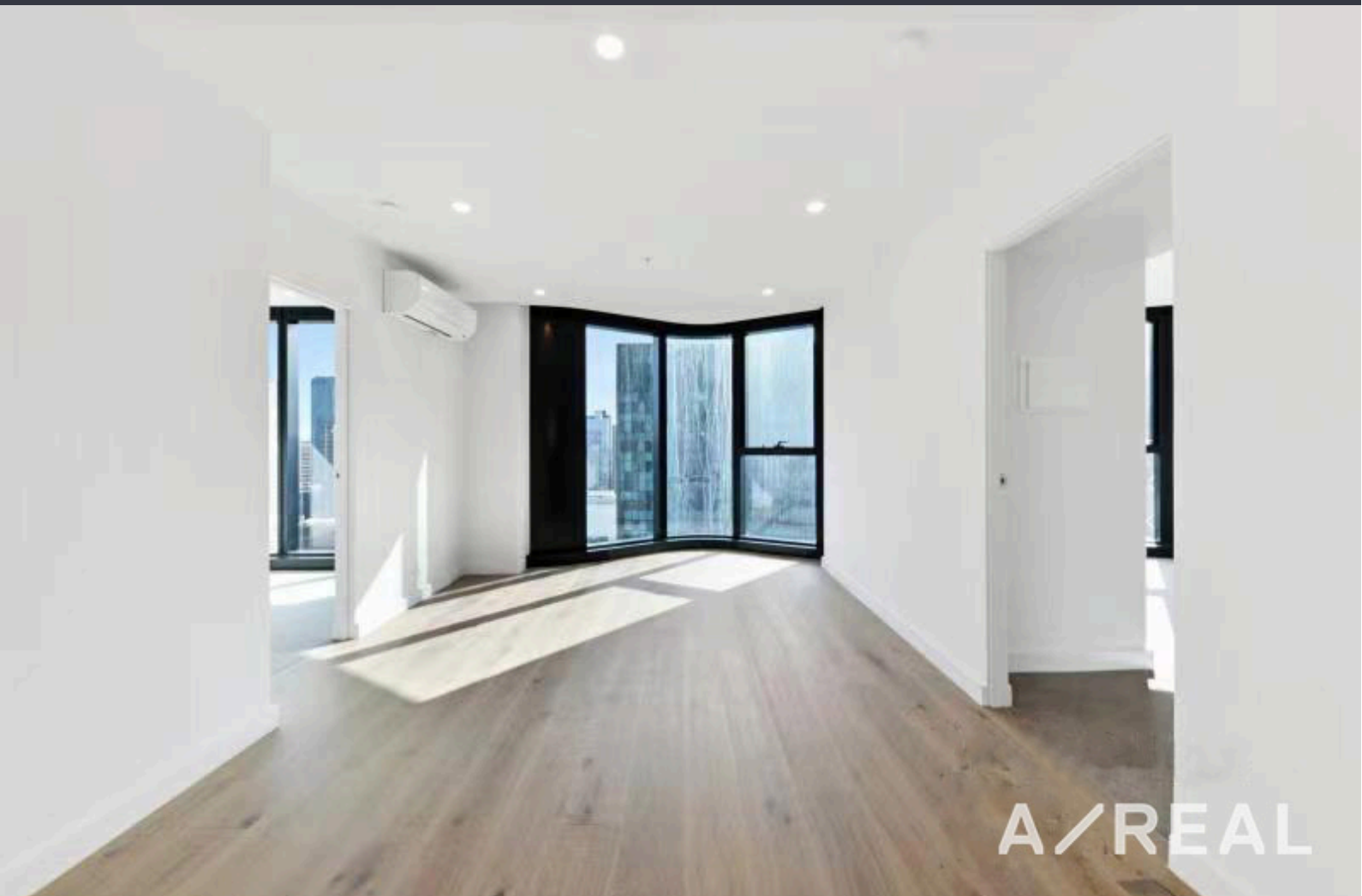
To apply for this property, please enter your details to register for an inspection (if you do not register you will not receive updates regarding any changes and/or cancellations). Please note: we are unable to accept tenancy applications until the property has been inspected. Simply click on EMAIL AGENT, enter your details and receive instant details of the inspection times. We look forward to meeting you at the inspection!

These luxuriously appointed 2 bedroom apartments feature premium fixtures and fittings, timber flooring, high-end European appliances, natural stone bench-tops and splash-backs, all culminating to a contemporary and striking design.

Meticulously designed with careful consideration to natural light, clean lines, flowing spaces, materials, and distinctive touches throughout.

With its many sublime spaces for exercise, recreation and relaxation, 380 Melbourne lets you live life to the full, without leaving the...

A/REAL



A/REAL

BOX HILL

Suite 3.4, Level 3, 990 Whitehorse Road, Box Hill. Victoria 3128 | 8686 8388

HAWTHORN EAST

33 Camberwell Road, Hawthorn. Victoria 3123 | 9818 8991

MELBOURNE CBD

Level 7, 99 Queen Street, Melbourne. VIC 3000 | 9818 8991

POINT COOK

Entrance C4, Level 1, 2 Main Street, Point Cook. VIC 3030 | 8686 8338

SOUTH MORANG

29 Gorge Road, South Morang. VIC 3752 | 8804 5888

info@areal.com.au