

Luxurious Urban Living at its  
Finest: Two-Bedroom Oasis in  
the Heart of Melbourne's CBD!



For Lease

5001B/639 Little Lonsdale St Melbourne VIC 3000

 2     1

\$760 per Week

## For Lease

5001B/639 Little Lonsdale St Melbourne VIC 3000



### Luxurious Urban Living at its Finest: Two-Bedroom Oasis in the Heart of Melbourne's CBD!

\*\*Scheduling your property inspection is now a breeze! Simply click on the "Book an Inspection" or "Request a Time" button to secure your appointment. You'll instantly receive a confirmation and be kept up-to-date with any alterations or cancellations concerning your scheduled visit. Please be aware, inspections may be subject to cancellation if no bookings are registered. Make your booking today and take the first step in finding your ideal home\*\*

5001B/639 Little Lonsdale St, Melbourne, VIC 3000

Situated at the intersection of Spencer and Lonsdale Streets in the heart of Melbourne's CBD, West Side Place proudly anchors itself in a diverse, vibrant, and highly livable neighborhood. Embark on a discovery of a new Melbourne right outside your doorstep, where Flagstaff Gardens, top-notch dining options, and Southern Cross Station are mere moments away.

This meticulously designed two-bedroom apartment boasts architectural finesse and premium interior finishes, including engineered tim...

#### Steven Wang

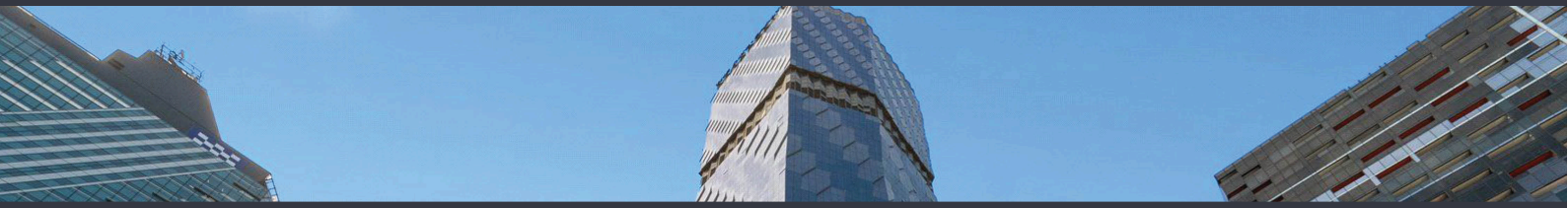
Senior Relationship Manager/  
Licensed Estate Agent

0409 503 495

03 9818 8991

steven.wang@areal.com.au

A/REAL







## BOX HILL

Suite 3.4, Level 3, 990 Whitehorse Road, Box Hill. Victoria 3128 | 8686 8388

## HAWTHORN EAST

33 Camberwell Road, Hawthorn. Victoria 3123 | 9818 8991

## MELBOURNE CBD

Level 7, 99 Queen Street, Melbourne. VIC 3000 | 9818 8991

## POINT COOK

Entrance C4, Level 1, 2 Main Street, Point Cook. VIC 3030 | 8686 8338

## SOUTH MORANG

29 Gorge Road, South Morang. VIC 3752 | 8804 5888

[info@areal.com.au](mailto:info@areal.com.au)