

## Charming Family Appeal In Penelope Close



### For Lease

26 Penelope Close, Cranbourne North VIC 3977

 4    2

\$570 per Week

## For Lease

26 Penelope Close, Cranbourne North VIC 3977

 4     2

### Charming Family Appeal In Penelope Close

Hidden away on the fringe of the Victorian city is this charming four bedroom residence on a lush, leafy oasis.

On the entry level is an extensive dining room which leads to the spacious living room that leads out to the alfresco area. Upstairs are the lavishly decorated bedrooms with built-in robes and an open rumpus area awash with natural light from the wide angled windows. Beyond the glass, outside a garden of eden, perfect for entertaining guests at a summer cookout.

This home offers amazing features such as:

Four spacious bedrooms with built in wardrobes

An extended rumpus area

An alfresco area

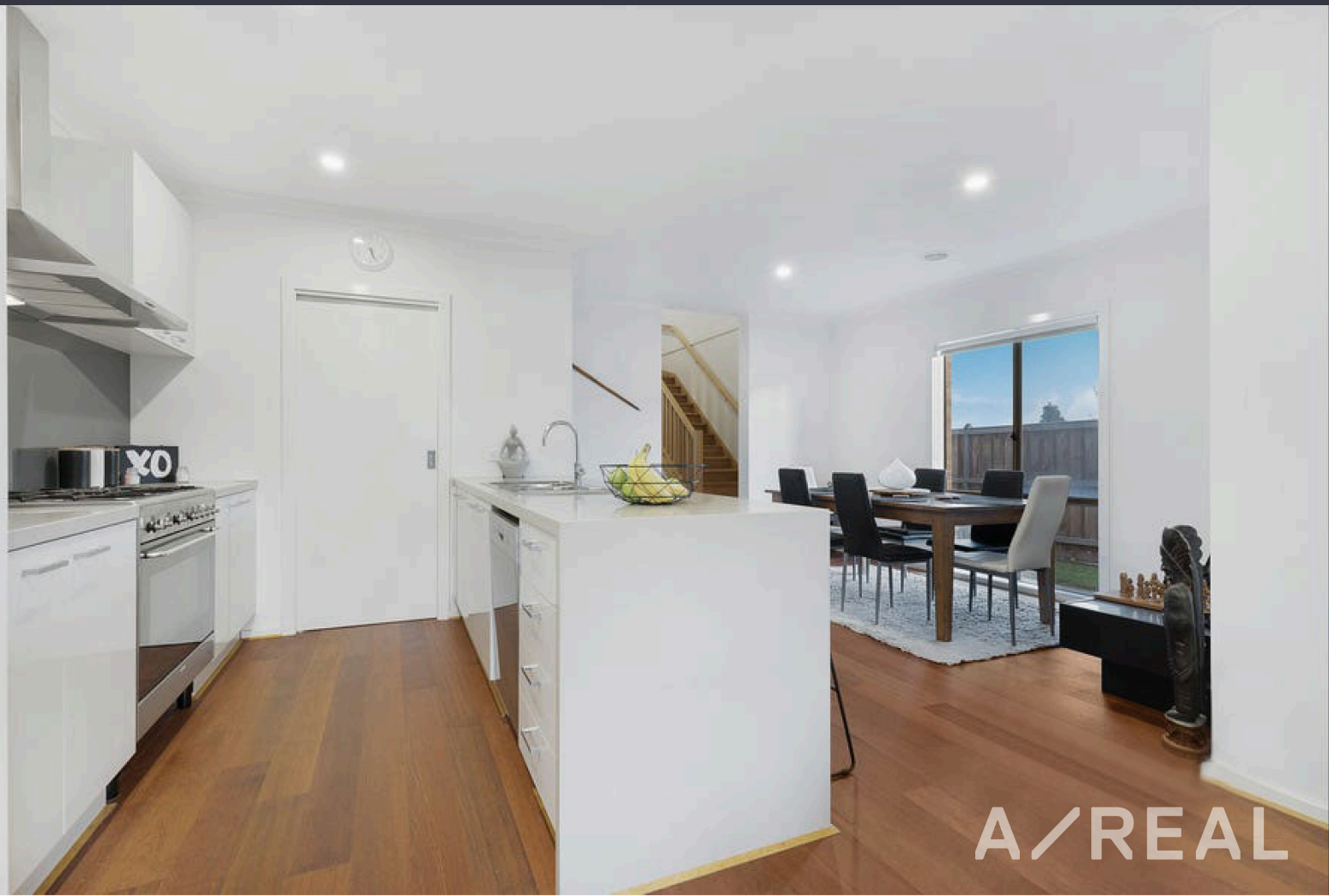
An incredible kitchen with walk-in pantry, magnificent kitchen island with stone bench tops

Light-filled living area with access through the glass sliding door to the yard, perfect for entertaining guests at a summer cookout.

Double car garage

With its warm sense of community and only moments to shops, eateries, schools and transport this home provides all the elements for relaxing, co...

A/REAL



A/REAL





#### BOX HILL

Suite 3.4, Level 3, 990 Whitehorse Road, Box Hill. Victoria 3128 | 8686 8388

#### HAWTHORN EAST

33 Camberwell Road, Hawthorn. Victoria 3123 | 9818 8991

#### MELBOURNE CBD

Level 7, 99 Queen Street, Melbourne. VIC 3000 | 9818 8991

#### POINT COOK

Entrance C4, Level 1, 2 Main Street, Point Cook. VIC 3030 | 8686 8338

#### SOUTH MORANG

29 Gorge Road, South Morang. VIC 3752 | 8804 5888

[info@areal.com.au](mailto:info@areal.com.au)

[areal.com.au](https://areal.com.au)