

Landmark 1 Bed with 1 Car Park



For Lease

306/7 Evergreen Mews, Armadale VIC 3143

 1  1

\$449 per Week

For Lease

306/7 Evergreen Mews, Armadale VIC 3143



Landmark 1 Bed with 1 Car Park

****ARRANGE AN INSPECTION TIME ONLINE - DETAILS BELOW****

Perched on the 3rd floor of impressive Toorak Park development with amazing uninterrupted views across Melbourne and Toorak, is this superb as luxurious 1-bedroom, 1-bathroom apartment, beautifully designed and offering the highest quality finishes throughout.

Perfectly laid out, the living room is spacious with floor to ceiling sliding doors opening out onto entertainers balcony with enviable delightful views over Orrong Park. The kitchen is a chefs dream with with Miele cook top/oven, dishwasher and ample storage space. The perfectly proportioned bedroom with fully fitted built in robes and the bathroom offers style and sophistication. The property continues to deliver laundry, one separate basement car park with keyed lift access.

Building features includes exclusive access to an array of stylish amenities including gym, swimming pool, new cafe and food market, reading rooms and communal courtyard completes the picture (Acces...

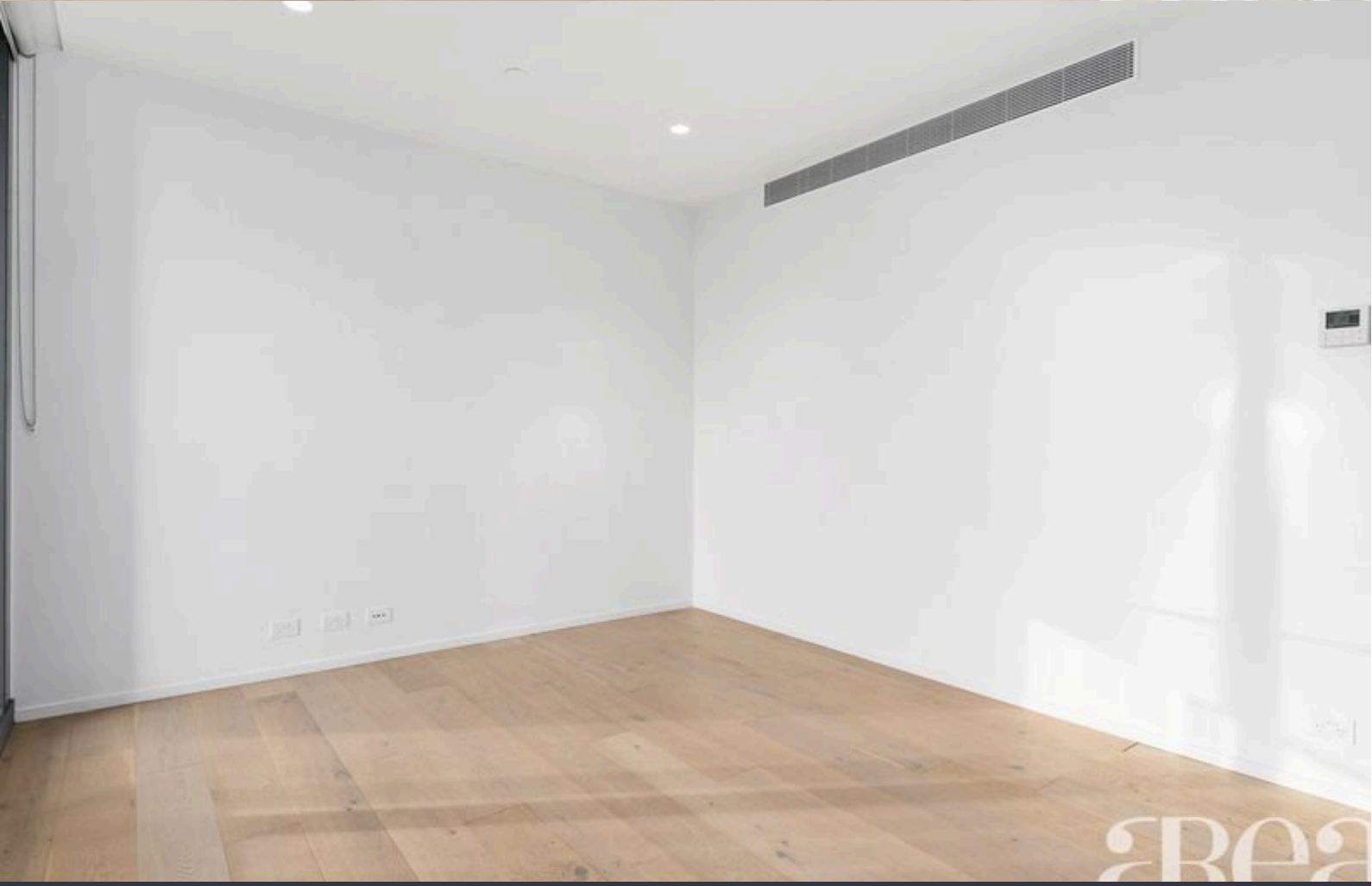


Steven Wang

Senior Relationship Manager, Licensed Estate Agent

03 9818 8991

steven.wang@areal.com.au





AREA



AREA

BOX HILL

Suite 3.4, Level 3, 990 Whitehorse Road, Box Hill. Victoria 3128 | 8686 8388

HAWTHORN EAST

33 Camberwell Road, Hawthorn. Victoria 3123 | 9818 8991

MELBOURNE CBD

Level 7, 99 Queen Street, Melbourne. VIC 3000 | 9818 8991

NORTH

Suites 4 & 5 High Street, Lalor. VIC 3075 | 03 9436 0888

POINT COOK

Entrance C4, Level 1, 2 Main Street, Point Cook. VIC 3030 | 8686 8338

SOUTH MORANG

29 Gorge Road, South Morang. VIC 3752 | 8804 5888

info@areal.com.au