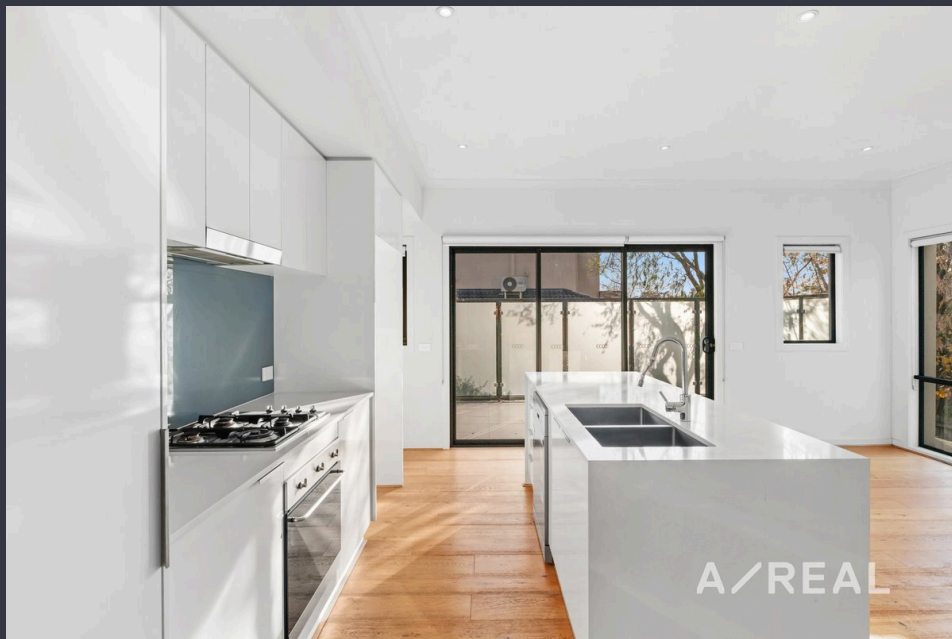


Luxurious 4-Bedroom Townhouse in Templestowe Lower



For Lease

1/5 Ashford Street, Templestowe Lower VIC 3107

 4  2

\$820 per Week

For Lease

1/5 Ashford Street, Templestowe Lower VIC 3107

 4  2

Luxurious 4-Bedroom Townhouse in Templestowe Lower

Scheduling your property inspection is now a breeze! Simply click on the "Book an Inspection" or "Request a Time" button to secure your appointment. You'll instantly receive a confirmation and be kept up-to-date with any alterations or cancellations concerning your scheduled visit. Please be aware, inspections may be subject to cancellation if no bookings are registered. Make your booking today and take the first step in finding your ideal home

Discover the perfect blend of comfort and convenience with this stunning 4-bedroom, 2-bathroom townhouse located in the heart of Templestowe Lower. This modern residence offers a spacious open-plan living area, bathed in natural light, perfect for entertaining guests or enjoying a quiet night in. The sleek, contemporary kitchen features top-of-the-line appliances, ample storage, and a breakfast bar that seamlessly integrates with the dining area, making it an ideal space for family gatherings.

Upstairs, you'll find three generously sized ...



Jessica Sha

Business Development Manager, Licensed Estate Agent

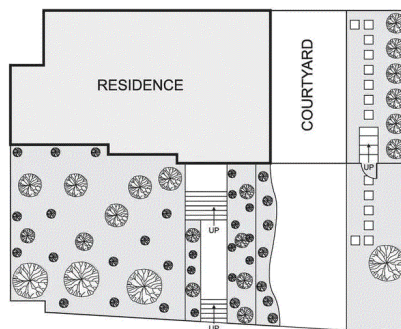
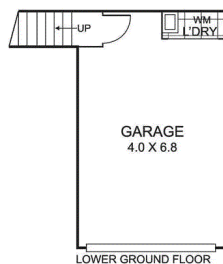
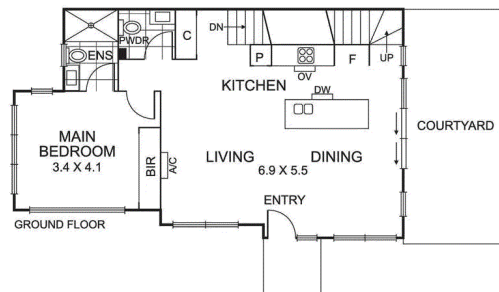
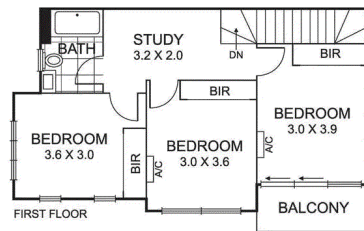
0406 265 788

03 9818 8991

jessica.sha@areal.com.au







BOX HILL

Suite 3.4, Level 3, 990 Whitehorse Road, Box Hill. Victoria 3128 | 8686 8388

HAWTHORN EAST

33 Camberwell Road, Hawthorn. Victoria 3123 | 9818 8991

MELBOURNE CBD

Level 7, 99 Queen Street, Melbourne. VIC 3000 | 9818 8991

NORTH

Suites 4 & 5 High Street, Lalor. VIC 3075 | 03 9436 0888

POINT COOK

Entrance C4, Level 1, 2 Main Street, Point Cook. VIC 3030 | 8686 8338

SOUTH MORANG

29 Gorge Road, South Morang. VIC 3752 | 8804 5888

info@areal.com.au