

# A/REAL

Contemporary single-level  
comfort & convenience



## For Sale

8 Flatbush Avenue, Point Cook VIC 3030

 4  2

\$674,000

## For Sale

8 Flatbush Avenue, Point Cook VIC 3030

 4  2

### Contemporary single-level comfort & convenience

Discover modern excellence and estate-style living in this thoughtfully designed 4 bedroom, 2 bathroom residence, appealing to a diverse range of buyers.

Warm neutral tones, natural light and a welcoming ambience highlight spacious interiors, with open-plan living/dining complementing a gourmet kitchen featuring stone surfaces, island bench, stainless steel appliances and walk-in pantry.

Every detail of this custom-designed home reflects quality and lifestyle allure, complete with a master bedroom with WIR and luxe ensuite, ducted heating, evaporative cooling, paved terrace, generous rear yard and double garage. Located within the Upper Point Cook Estate, approximately 21kms from Melbourne CBD, and close to parklands, childcare, medical centre, schools, Point Cook Town Centre, public transport, and easy access to freeway.

Disclaimer: We have in preparing the content used our best endeavours to ensure that the information contained is true and accurate, but accept no responsibility ...



**Jay Wang**

Sales Executive

0493 891 712

03 9818 8991

[jay.wang@areal.com.au](mailto:jay.wang@areal.com.au)

A/REAL

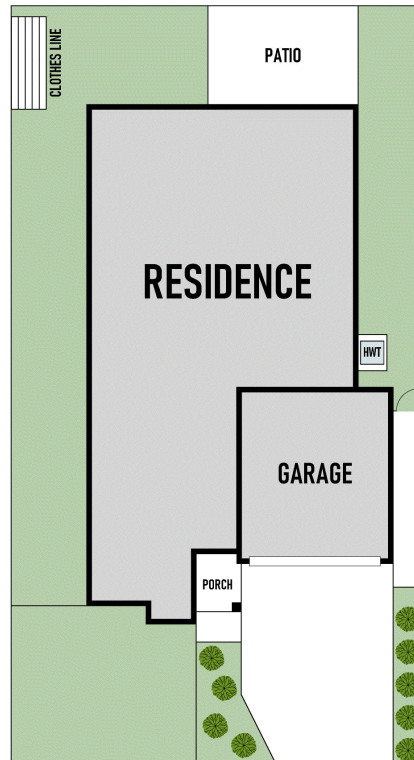
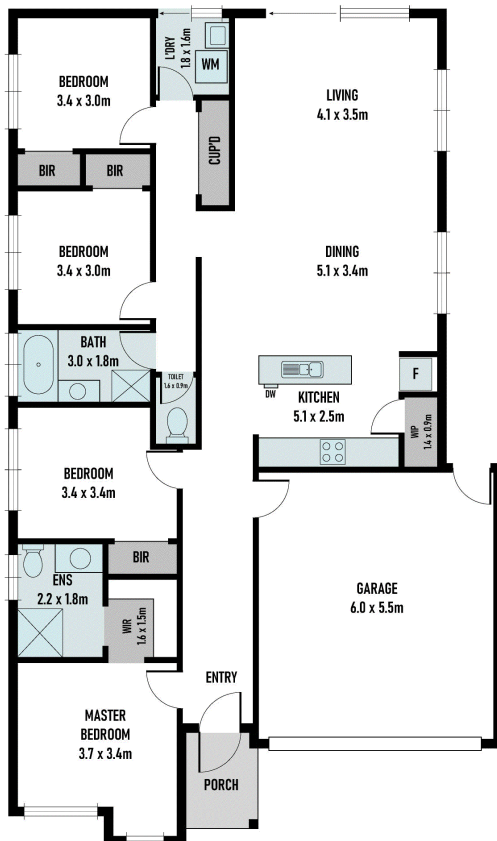


A/REAL



A/REAL





INTERNAL : 150M<sup>2</sup>  
 TOTAL AREA : 150M<sup>2</sup>  
 LAND SIZE : 387M<sup>2</sup>



## BOX HILL

Suite 3.4, Level 3, 990 Whitehorse Road, Box Hill. Victoria 3128 | 8686 8388

## HAWTHORN EAST

33 Camberwell Road, Hawthorn. Victoria 3123 | 9818 8991

## MELBOURNE CBD

Level 7, 99 Queen Street, Melbourne. VIC 3000 | 9818 8991

## NORTH

Suites 4 & 5 High Street, Lalor. VIC 3075 | 03 9436 0888

## POINT COOK

Entrance C4, Level 1, 2 Main Street, Point Cook. VIC 3030 | 8686 8338

## SOUTH MORANG

29 Gorge Road, South Morang. VIC 3752 | 8804 5888

[info@areal.com.au](mailto:info@areal.com.au)