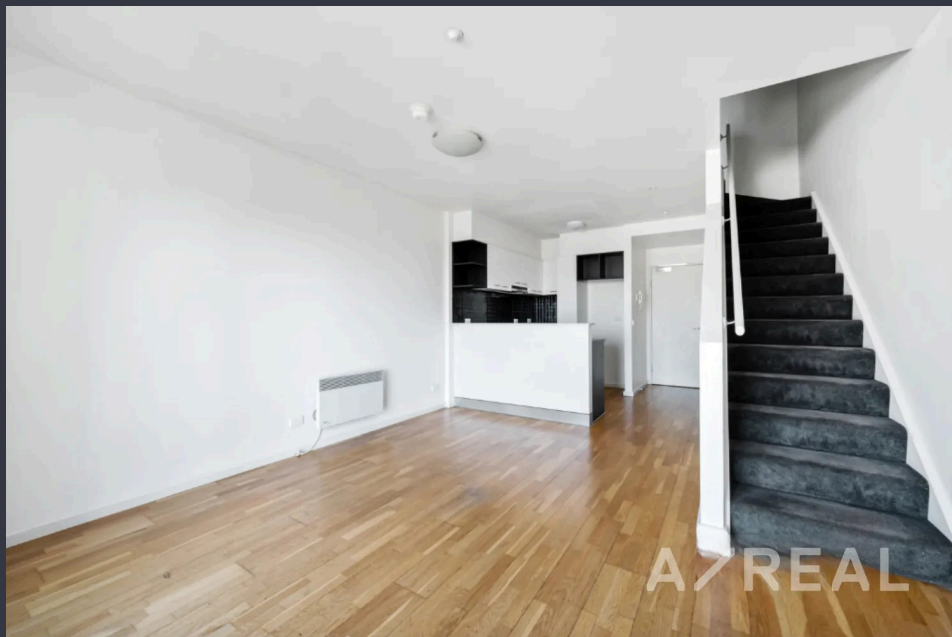


## LOFT 1 Bedroom Apartment Next to RMIT



For Lease

2112/87 Franklin Street, Melbourne VIC 3000



\$575 per Week

## For Lease

2112/87 Franklin Street, Melbourne VIC 3000



### LOFT 1 Bedroom Apartment Next to RMIT

\*\*Scheduling your property inspection is now a breeze! Simply click on the "Book an Inspection" or "Request a Time" button to secure your appointment. You'll instantly receive a confirmation and be kept up-to-date with any alterations or cancellations concerning your scheduled visit. Please be aware, inspections may be subject to cancellation if no bookings are registered. Make your booking today and take the first step in finding your ideal home\*\*

Set in a prime position with amazing views, this apartment offers a great opportunity for someone looking for a centrally located home with easy access to all of Melbourne's major attractions. Situated on the 21st floor in the highly sought-after Franklin Lofts building, this 1-bedroom, 1-bathroom loft apartment is sure to please. Located across from RMIT University and just a tram stop away from Melbourne University, it is a short stroll to Victoria Market and Melbourne Central.

The property features a minimalistic bedroom with built-in ...

#### Rayna Hao

Senior Relationship Manager

0452 115 847

03 9818 8991

rayna.hao@areal.com.au

A/REAL



A/REAL





#### BOX HILL

Suite 3.4, Level 3, 990 Whitehorse Road, Box Hill. Victoria 3128 | 8686 8388

#### HAWTHORN EAST

33 Camberwell Road, Hawthorn. Victoria 3123 | 9818 8991

#### MELBOURNE CBD

Level 7, 99 Queen Street, Melbourne. VIC 3000 | 9818 8991

#### POINT COOK

Entrance C4, Level 1, 2 Main Street, Point Cook. VIC 3030 | 8686 8338

#### SOUTH MORANG

29 Gorge Road, South Morang. VIC 3752 | 8804 5888

[info@areal.com.au](mailto:info@areal.com.au)

[areal.com.au](https://areal.com.au)