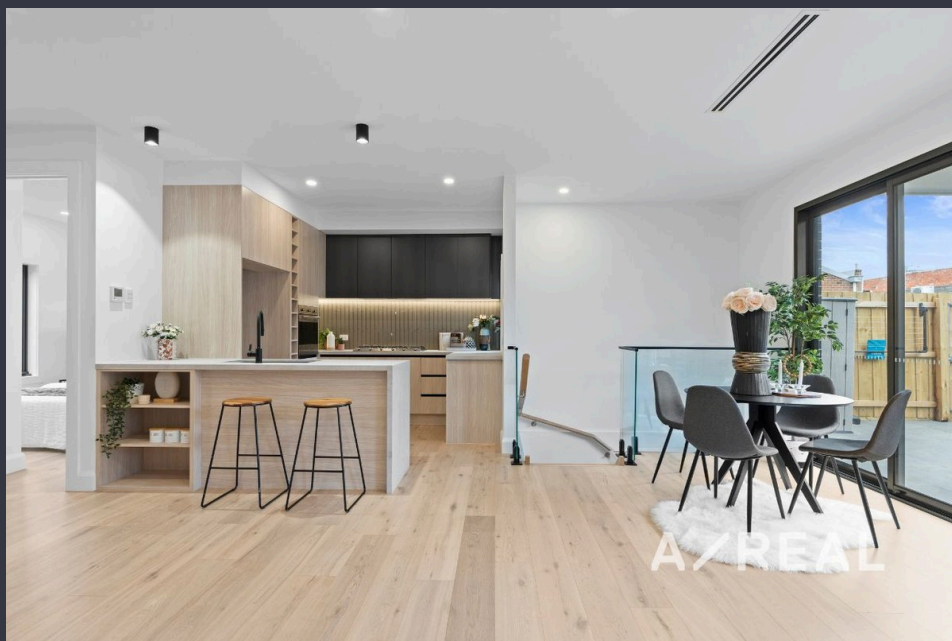



Contemporary & Comfortable Townhouse Living in Prime Bentleigh East Locale



For Lease

4/11 Caleb Street, Bentleigh East VIC 3165

 4  2

\$970 per Week

For Lease

4/11 Caleb Street, Bentleigh East VIC 3165

 4  2

Contemporary & Comfortable Townhouse Living in Prime Bentleigh East Locale

Scheduling your property inspection is now a breeze! Simply click on the "Book an Inspection" or "Request a Time" button to secure your appointment. You'll instantly receive a confirmation and be kept up-to-date with any alterations or cancellations concerning your scheduled visit. Please be aware, inspections may be subject to cancellation if no bookings are registered. Make your booking today and take the first step in finding your ideal home

Tucked privately at the rear of a quiet and well-kept complex, this modern and spacious townhouse presents a fantastic lifestyle opportunity in one of Bentleigh East's most convenient locations. Thoughtfully designed to maximise both comfort and functionality, the home boasts four generous bedrooms, including a master retreat complete with walk-in robe and a sleek ensuite for added privacy.

The additional bedrooms all feature built-in wardrobes and are serviced by a modern central bathroom showcasing a full-sized bathtub and separate show...

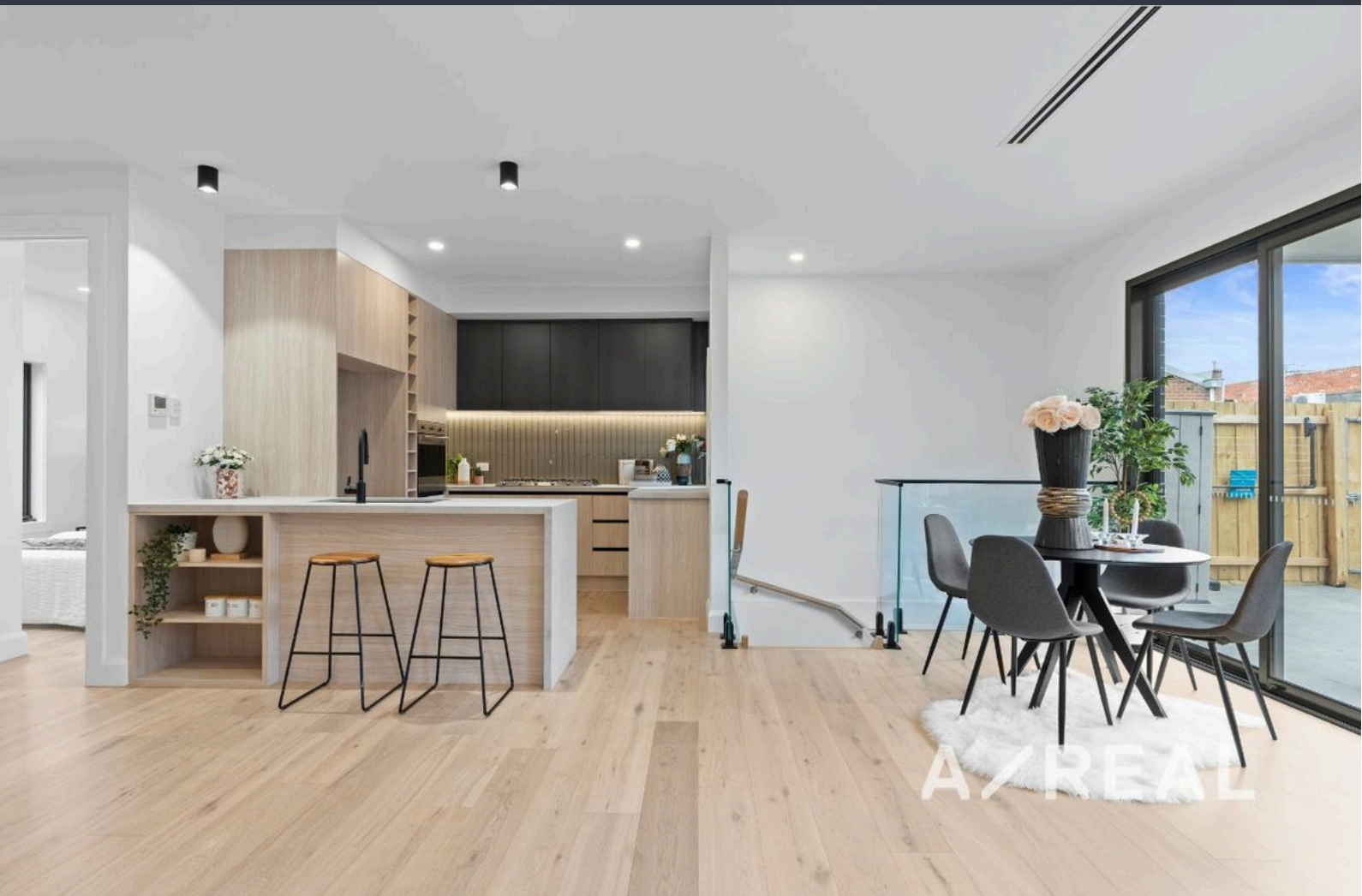


Amanda Zhou

Relationship Manager

03 9818 8991

amanda.zhou@areal.com.au





BOX HILL

Suite 3.4, Level 3, 990 Whitehorse Road, Box Hill. Victoria 3128 | 8686 8388

HAWTHORN EAST

33 Camberwell Road, Hawthorn. Victoria 3123 | 9818 8991

MELBOURNE CBD

Level 7, 99 Queen Street, Melbourne. VIC 3000 | 9818 8991

NORTH

Suites 4 & 5 High Street, Lalor. VIC 3075 | 03 9436 0888

POINT COOK

Entrance C4, Level 1, 2 Main Street, Point Cook. VIC 3030 | 8686 8338

SOUTH MORANG

29 Gorge Road, South Morang. VIC 3752 | 8804 5888

info@areal.com.au