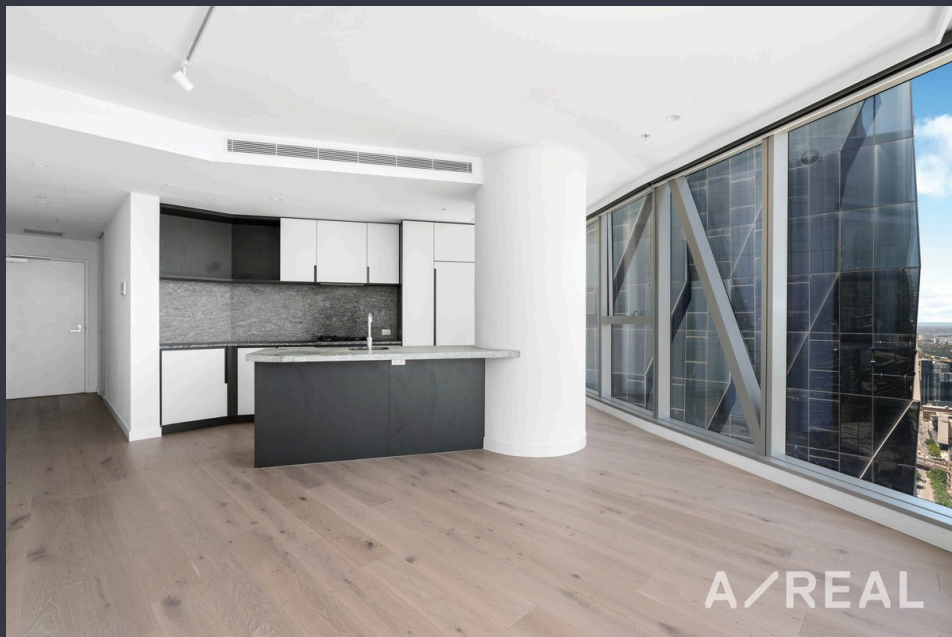


Landmark High Rise with Stunning Water View



For Lease

6109B/639 Little Lonsdale Street, Melbourne VIC 3000

 2  2

\$800 per Week

For Lease

6109B/639 Little Lonsdale Street, Melbourne VIC 3000



Landmark High Rise with Stunning Water View

6109B/639 Little Lonsdale St, Melbourne, VIC 3000

This luxurious large two-bedroom apartment with a Stunning view across Ocean and Dockland Harbor has been meticulously designed and built to service every need of modern living in CBD Melbourne.

The generous-sized living room is filled with natural light with a large balcony size.

Featuring European appliances including an electric oven, 4 burner gas cooktop and dishwasher, integrated heating and cooling, an abundance of pantry space, timber floors, and luxury carpet for bedrooms.

The bedrooms are filled with abundant natural light, offering room for a generously sized bed with bedside tables and built-in wardrobes.

Serviced by the designer central bathroom, tiled floor-to-ceiling with a walk-in shower and mirrored cabinets above the stone vanities.

Residents of the building will in the future enjoy access to impressive facilities including secure entry, 24/7 concierge service, a pool with steam room and sauna, gym, dining room, ...



Steven Wang

Senior Relationship Manager, Licensed Estate Agent

03 9818 8991

steven.wang@areal.com.au





BOX HILL

Suite 3.4, Level 3, 990 Whitehorse Road, Box Hill. Victoria 3128 | 8686 8388

HAWTHORN EAST

33 Camberwell Road, Hawthorn. Victoria 3123 | 9818 8991

MELBOURNE CBD

Level 7, 99 Queen Street, Melbourne. VIC 3000 | 9818 8991

NORTH

Suites 4 & 5 High Street, Lalor. VIC 3075 | 03 9436 0888

POINT COOK

Entrance C4, Level 1, 2 Main Street, Point Cook. VIC 3030 | 8686 8338

SOUTH MORANG

29 Gorge Road, South Morang. VIC 3752 | 8804 5888

info@areal.com.au