



Boutique single-level living in  
convenient locale



For Sale

2/108 Blackshaws Road, South Kingsville VIC 3015

 2  1

\$520,000

## For Sale

2/108 Blackshaws Road, South Kingsville VIC 3015

 2    1

### Boutique single-level living in convenient locale

Nestled within a boutique block of only 4, this meticulously maintained single-level villa presents an outstanding opportunity for first-home buyers, downsizers, young families and savvy investors.

Beautifully presented with a warm and inviting ambiance throughout, timber floors and natural light add vibrancy to the open-plan living/dining area, served by a stylish kitchen featuring stainless steel appliances and ample storage.

Two bedrooms are generously proportioned, fitted with BIRs and share an immaculate bathroom, while a rear patio, split system heating/AC and dedicated car space ensure lifestyle comfort and modern convenience.

With nothing to do but move in and enjoy, also appreciate a prime location close to Newport Lakes Park, Newport Lakes Primary School, local shops, Scienceworks Museum, Spotswood train station and the Westgate Freeway for easy access to the city.

Disclaimer: We have in preparing the content used our best endeavours to ensure that the information contain...



## Keith Chan

Sales Executive/Auctioneer

0410 234 188

03 9818 8991

[keith.chan@areal.com.au](mailto:keith.chan@areal.com.au)



A/REAL



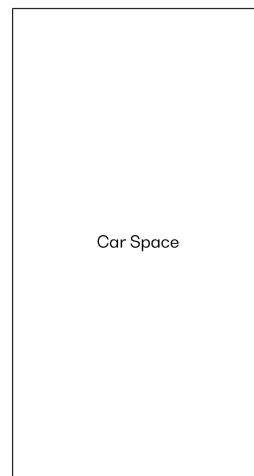
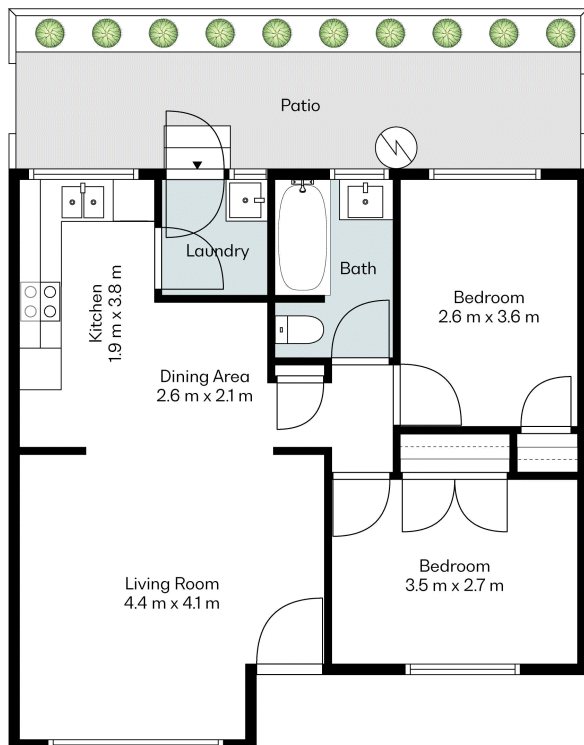








Living Area: 60m<sup>2</sup>  
Patio: 16m<sup>2</sup>  
(approx.)



(Not in Position)



#### BOX HILL

Suite 3.4, Level 3, 990 Whitehorse Road, Box Hill. Victoria 3128 | 8686 8388

#### HAWTHORN EAST

33 Camberwell Road, Hawthorn. Victoria 3123 | 9818 8991

#### MELBOURNE CBD

Level 7, 99 Queen Street, Melbourne. VIC 3000 | 9818 8991

#### POINT COOK

Entrance C4, Level 1, 2 Main Street, Point Cook. VIC 3030 | 8686 8338

#### SOUTH MORANG

29 Gorge Road, South Morang. VIC 3752 | 8804 5888

[info@areal.com.au](mailto:info@areal.com.au)

[areal.com.au](https://areal.com.au)